



CRW900 Water Rower ***Service Manual***



Dyaco International Inc.

Service Manual

-----Table of Contents-----

1. Troubleshooting

1.1 Speed Sensor Trouble Shooting and Replacement Guide

1.2 Plastic Handle Belt Replacement

1.3 Trouble with console

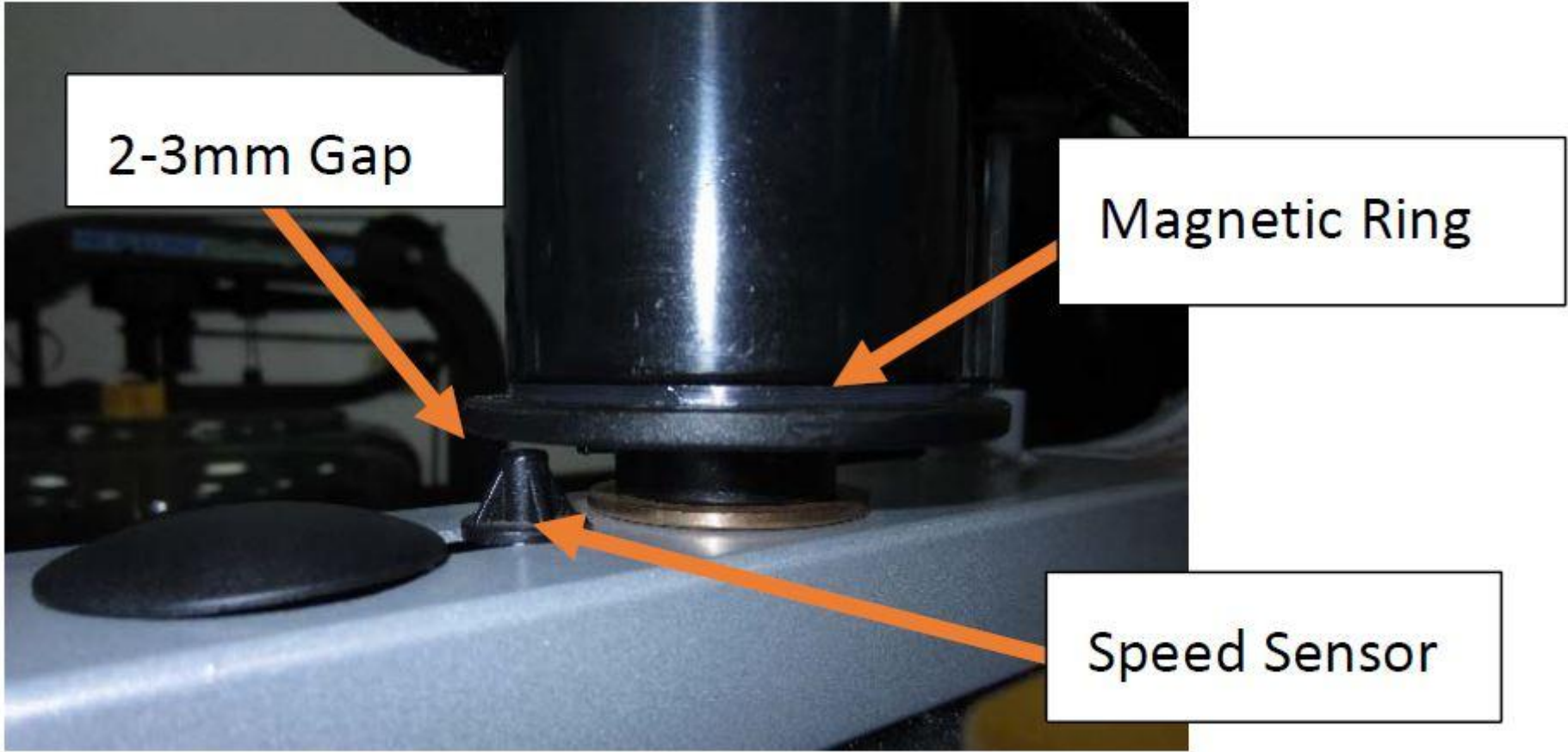
2. Maintenance

1. CRW900 Troubleshooting

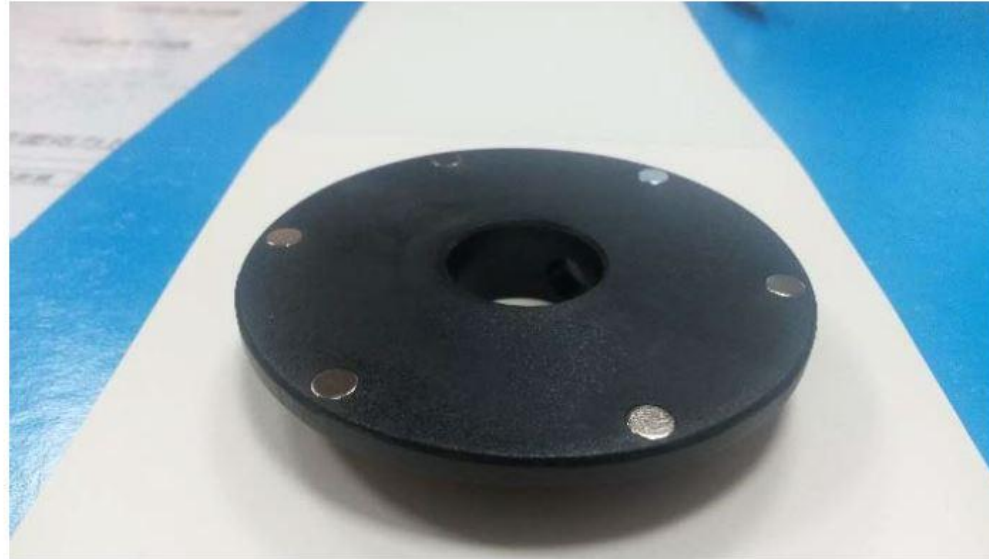
1.1 Speed Sensor Trouble Shooting and Replacement Guide

Speed Sensor Troubleshooting

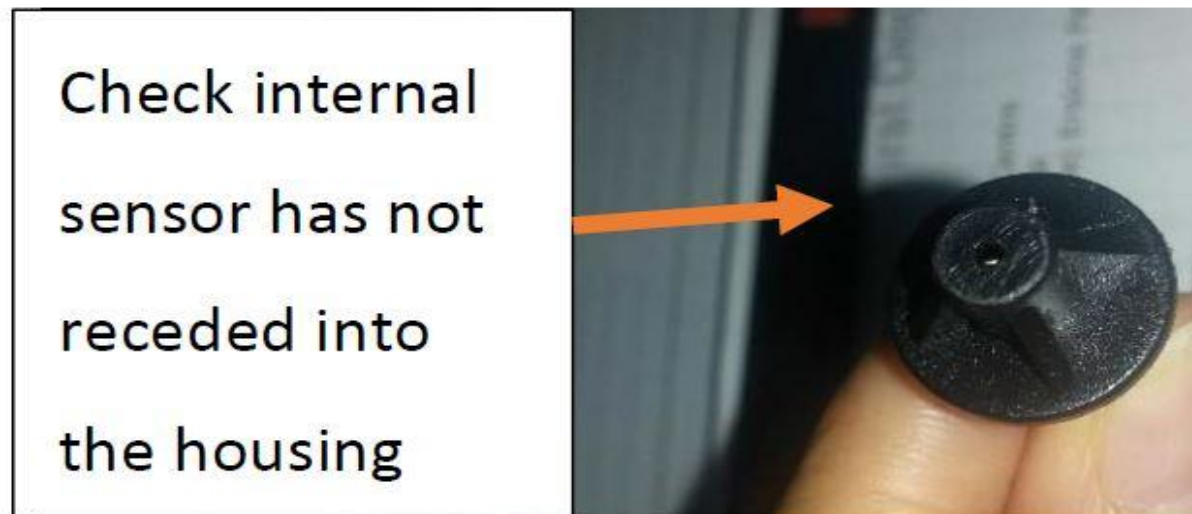
1. Check the gap between sensor and magnetic ring should be 2-3mm.



2. Visually check all 6 magnets in the magnetic ring are present and flush (no need to remove the ring)



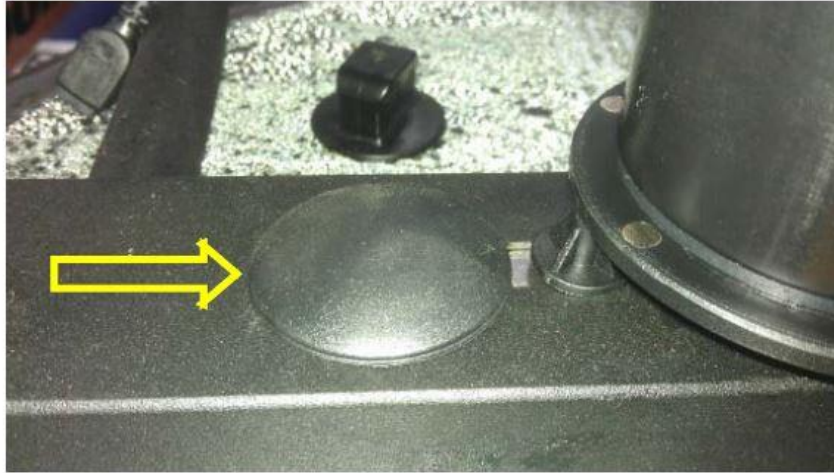
3. Check sensor head – the internal sensor should be no more than a few millimeters inside the hole.



4. If the above checks fail to resolve the issue continue to the next section.

Replacement Guide

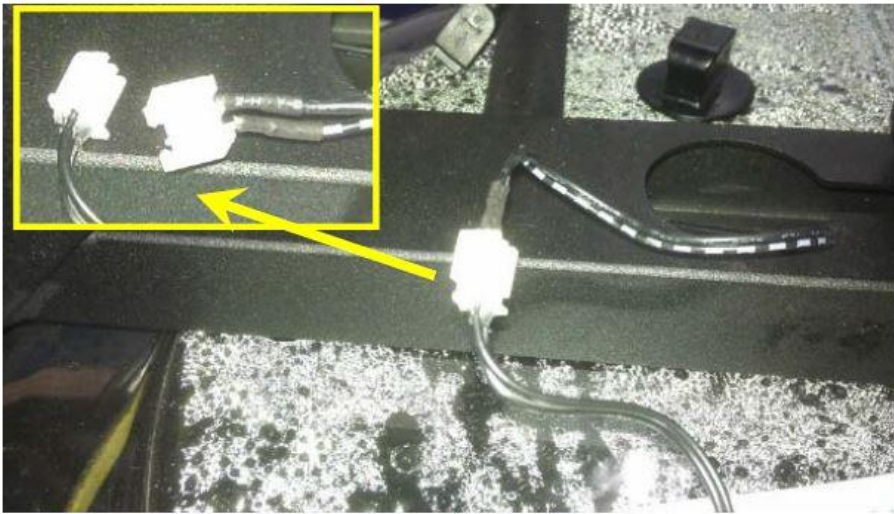
1. Sensor Removal



Remove the Frame Plug



Pull the Speed Sensor out of the frame

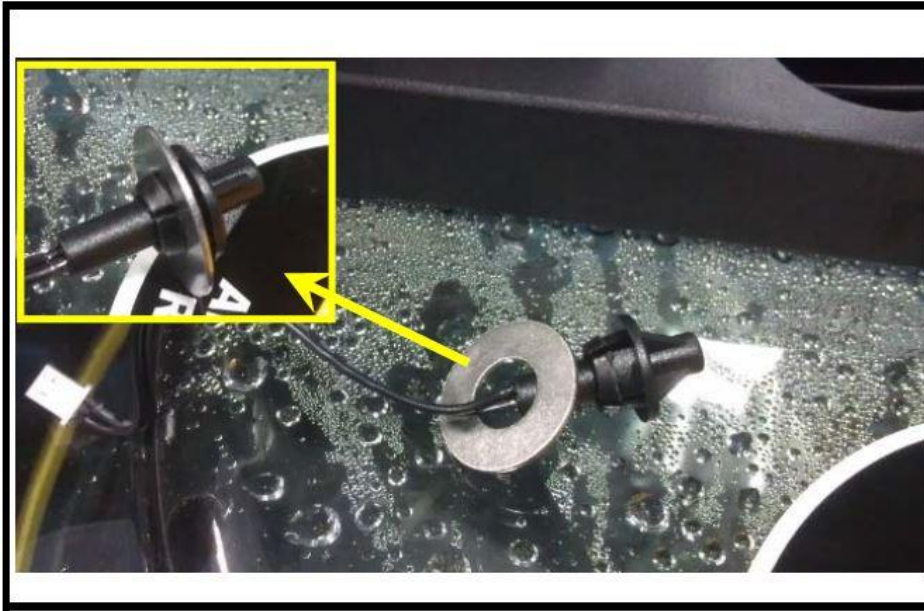


Disconnect the sensor
cables

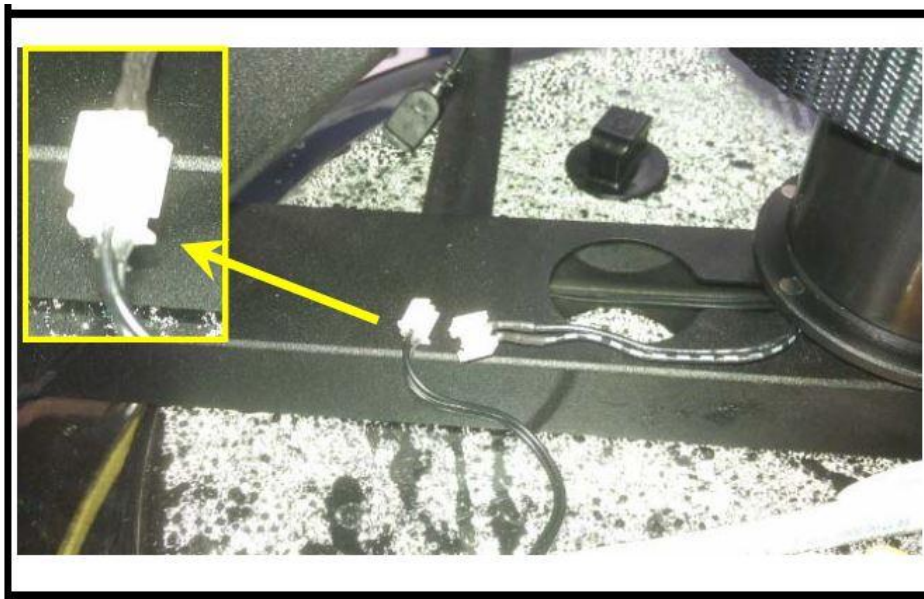


Remove the washer from
the Speed Sensor

2. Sensor Re-Installation



Fit washer onto the new
Sensor



Connect the cables.



Install the Speed Sensor as shown.

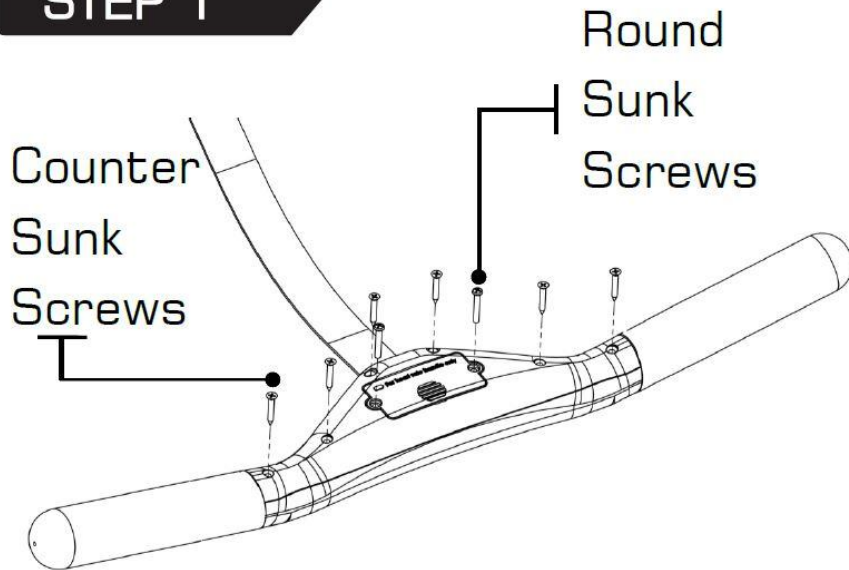


Replace the Frame Plug.

1.2 Plastic Handle Belt Replacement

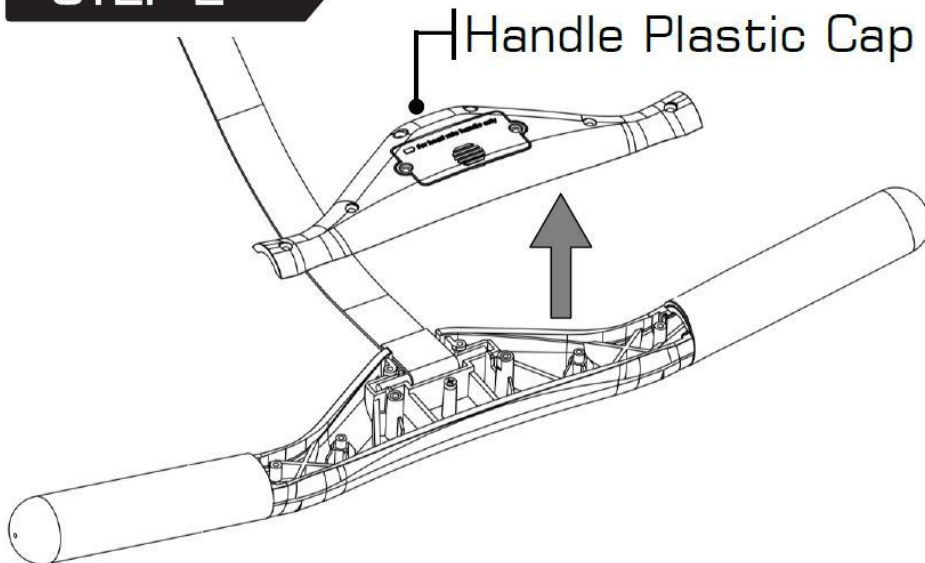
1. Plastic Handle Belt Removal

STEP 1



Remove the 6x M3x20mm Counter Sunk Screws and 2x M3x12mm Round Sunk Screws .

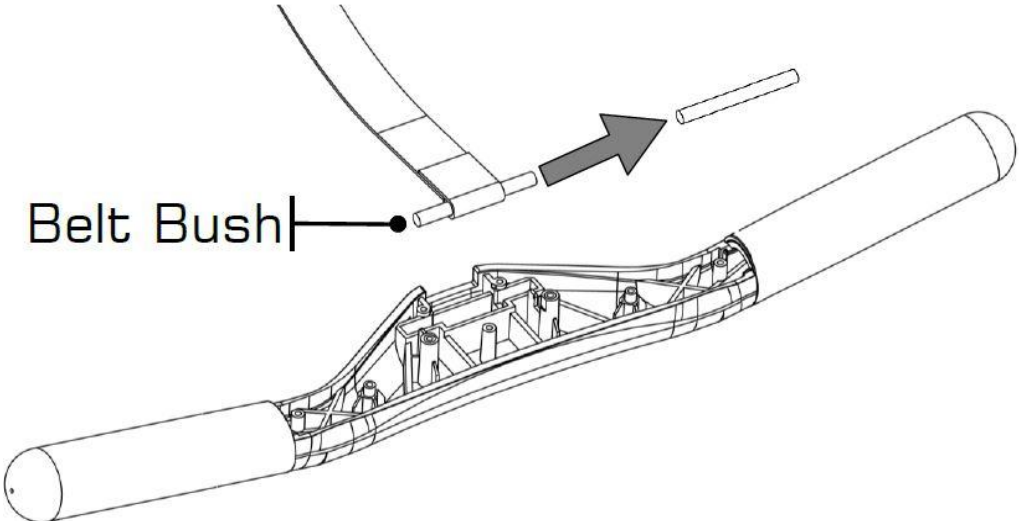
STEP 2



Remove Handle Plastic Cap

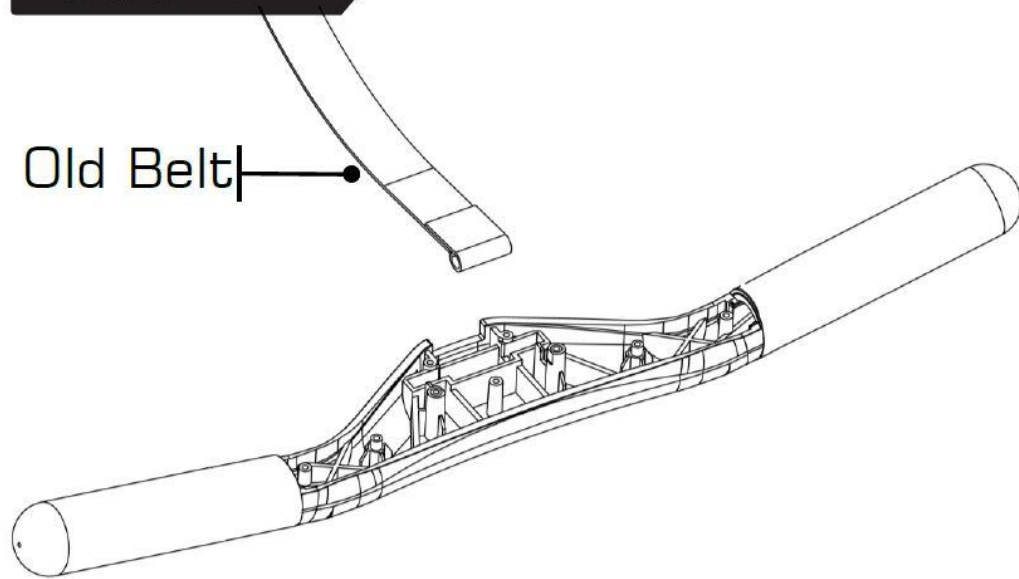
STEP 3

Remove Belt Bush



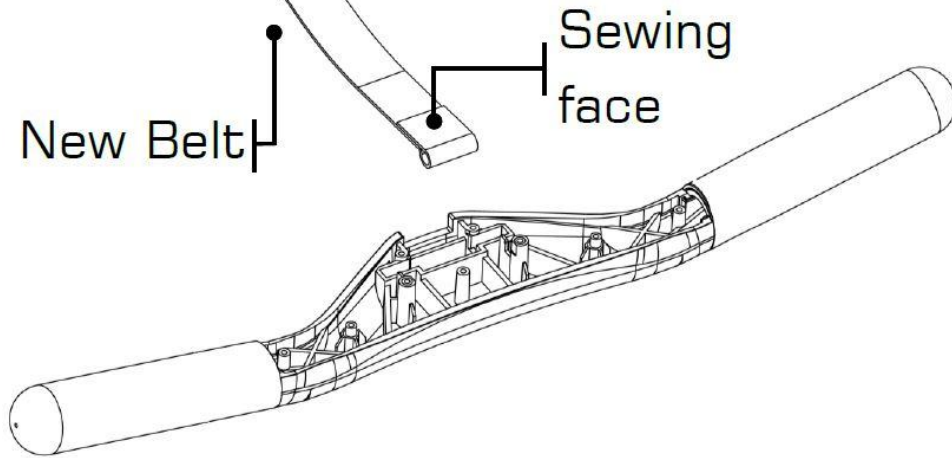
STEP 4

Remove Old Belt



2. Plastic Handle Belt Installation

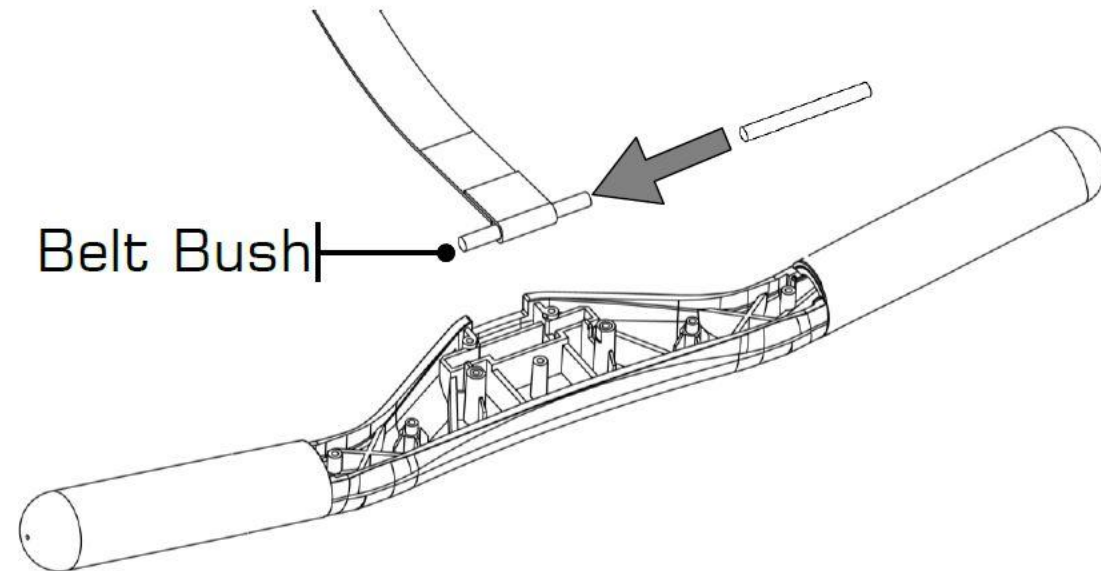
STEP 1



Installation New Belt Bush.

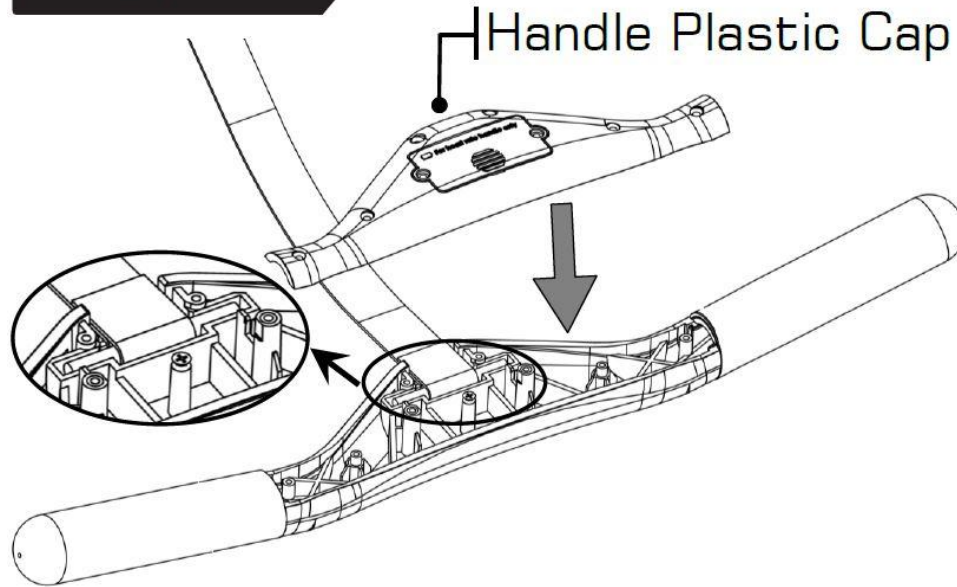
⚠ **CAUTION**
Sewing face up

STEP 2



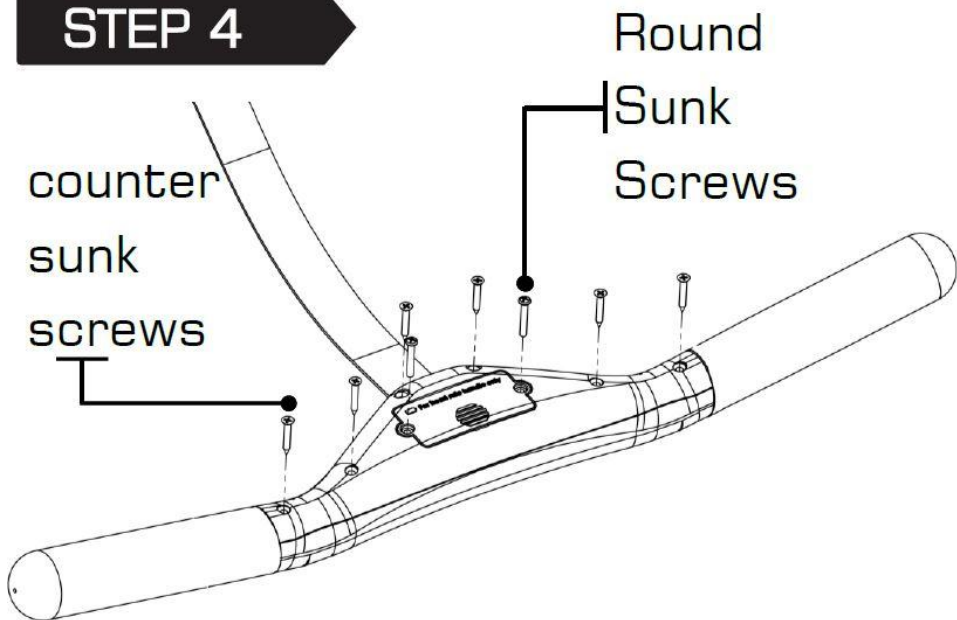
Reinstall Belt Bush

STEP 3



Belt is placed in the fixing slot and covered Handle Plastic Cap as shown in picture.

STEP 4



Reinstall the 6x M3x20mm Counter Sunk Screws and 2x M3x12mm Round Sunk Screws .

1.3 Trouble with console

Q: The console does not illuminate after battery installation:

A: Please confirm that batteries installed incorrectly or need replacing.

(☉Check to see if the batteries are installed in the correct position.

Reinstall or replace as needed. If the LCD screen fails to illuminate, try rotating the batteries slightly in the computer. If this fails, contact your local service center.)

Q: The console screen illuminates, but does not register when rowing:

A: Loose or failed connection Sensor gap too wide

(☉Check that the computer lead is connected properly. If it is connected then contact your local service center.

Check sensor gap.)

Q: Trouble with resistance:

A: VR Setting

1. Hold down ENTER+UP+DOWN buttons for 2 seconds. After entering VR settings mode, the buzzer will buzz

for 1 second.

2. The 7-segment display will show “VR”. The time window will show “L”.
3. Adjust VR for the first increment, then press the ENTER KEY to confirm.
4. The time window will show “H”. Adjust VR for the highest increment, then press ENTER button to confirm.
5. After setting the highest and lowest VR, the console then completes the VR settings and enters standby mode.
6. Configured VR range will automatically be divided into 10 even increments.

2. Maintenance

2.1 Lubrication Grease



Any kind of lubrication grease, such as super grease would do the job.

Open the cap, insert the nozzle into the frame, and spray on the shaft. And that top of the pulley below. Pull the handle strap slowly while putting the grease on. A little bit at a point.



