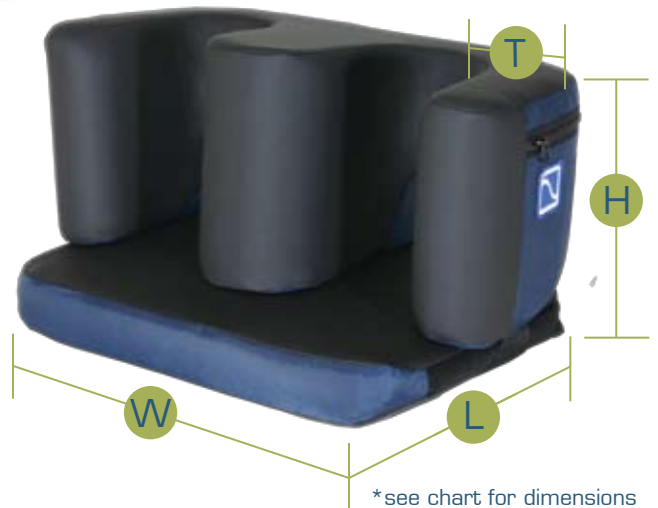


Complete Feet



*see chart for dimensions

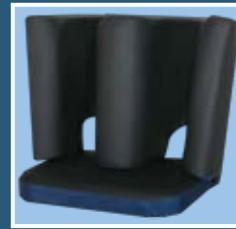
STANDARD



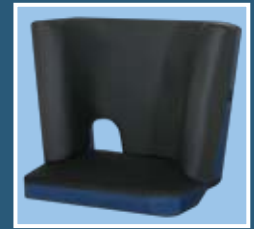
STANDARD
NO SEPARATOR



TALL



TALL
NO SEPARATOR



FEATURES

- Unique heel cut-out eliminates pressure that can lead to skin breakdown.
- Leg separator keeps feet and legs positioned properly.
- Medium density foam construction provides increased comfort.
- Tapered foot support accommodates different wheelchair foot rest plates.
- Non-skid fabric foot support keeps feet positioned correctly.
- Durable securing buckle and bolt-on option come standard with all models.



MOUNTING

COVER



SOLACE FABRIC — designed for pressure relief and comfort, Solace is fluid-proof, anti-microbial and soft to the touch. The multi-dimensional stretch design alleviates pressure on bony prominences and provides optimal skin protection.



NORMAL POSITION



SWING AWAY

- Bolt on installation with securing buckle allows Complete Feet to swing away for patient transfers.

FOOT CARE

COMPLETE FEET STANDARD

Complete Feet

| MODEL | WC SIZE | W x L x H | T" |
|-------|---------|---------------|------|
| 69A | 16" | 15½ x 10½ x 8 | 2.25 |
| 69B | 18" | 18 x 10½ x 8 | 2.5 |
| 69C | 20" | 19½ x 10½ x 8 | 3 |
| 69D | 22" | 19½ x 10½ x 8 | 3 |

Complete Feet w/ Gel

| MODEL | WC SIZE | W x L x H | T" |
|-------|---------|---------------|------|
| 69GA | 16" | 15½ x 10½ x 8 | 2.25 |
| 69GB | 18" | 18 x 10½ x 8 | 2.5 |
| 69GC | 20" | 19½ x 10½ x 8 | 3 |
| 69GD | 22" | 19½ x 10½ x 8 | 3 |

Complete Feet w/o Leg Separator

| MODEL | WC SIZE | W x L x H | T" |
|-------|---------|---------------|------|
| 696A | 16" | 15½ x 10½ x 8 | 2.25 |
| 696B | 18" | 18 x 10½ x 8 | 2.5 |
| 696C | 20" | 19½ x 10½ x 8 | 3 |
| 696D | 22" | 19½ x 10½ x 8 | 3 |

Complete Feet Gel w/o Leg Separator

| MODEL | WC SIZE | W x L x H | T" |
|-------|---------|---------------|------|
| 696GA | 16" | 15½ x 10½ x 8 | 2.25 |
| 696GB | 18" | 18 x 10½ x 8 | 2.5 |
| 696GC | 20" | 19½ x 10½ x 8 | 3 |
| 696GD | 22" | 19½ x 10½ x 8 | 3 |

COMPLETE FEET TALL

Complete Feet Tall

| MODEL | WC SIZE | W x L x H | T" |
|-------|---------|----------------|------|
| 69TA | 16" | 15½ x 10½ x 12 | 2.25 |
| 69TB | 18" | 18 x 10½ x 12 | 2.5 |
| 69TC | 20" | 19½ x 10½ x 12 | 3 |
| 69TD | 22" | 19½ x 10½ x 12 | 3 |

Complete Feet Tall w/ Gel

| MODEL | WC SIZE | W x L x H | T" |
|-------|---------|----------------|------|
| 69TGA | 16" | 15½ x 10½ x 12 | 2.25 |
| 69TGB | 18" | 18 x 10½ x 12 | 2.5 |
| 69TGC | 20" | 19½ x 10½ x 12 | 3 |
| 69TGD | 22" | 19½ x 10½ x 12 | 3 |

Complete Feet Tall w/o Leg Separator

| MODEL | WC SIZE | W x L x H | T" |
|-------|---------|----------------|------|
| 696TA | 16" | 15½ x 10½ x 12 | 2.25 |
| 696TB | 18" | 18 x 10½ x 12 | 2.5 |
| 696TC | 20" | 19½ x 10½ x 12 | 3 |
| 696TD | 22" | 19½ x 10½ x 12 | 3 |

Complete Feet Tall w/Gel w/o Leg Separator

| MODEL | WC SIZE | W x L x H | T" |
|--------|---------|----------------|------|
| 696TGA | 16" | 15½ x 10½ x 12 | 2.25 |
| 696TGB | 18" | 18 x 10½ x 12 | 2.5 |
| 696TGC | 20" | 19½ x 10½ x 12 | 3 |
| 696TGD | 22" | 19½ x 10½ x 12 | 3 |

FOOT SUPPORT ONLY

| MODEL | WC SIZE | W x L |
|-------|---------|-----------|
| 695A | 16" | 15½ x 10½ |
| 695B | 18" | 18 x 10½ |
| 695C | 20" | 19½ x 10½ |
| 695D | 22" | 19½ x 10½ |

FOOT SUPPORT ONLY W/ GEL

| MODEL | WC SIZE | W x L |
|-------|---------|-----------|
| 695GA | 16" | 15½ x 10½ |
| 695GB | 18" | 18 x 10½ |
| 695GC | 20" | 19½ x 10½ |
| 695GD | 22" | 19½ x 10½ |