

Elite

Tilt Semi-Recliner

POSITIONING
BRODA[®]



Shown with armrests, legrests, rear mag wheels, and solid seat pan.



Rear mount mag wheels facilitate hand propulsion allowing patients to socialize and engage in their surroundings.



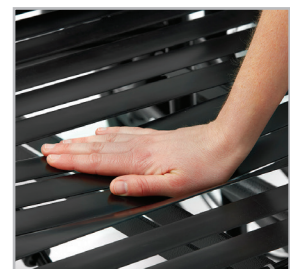
Adjustable tilt and recline helps decrease postural deviations such as slumping, lateral lean and head drop.



Posterior tilt effectively opens the diaphragm improving digestion, oxygenation, and organ function.

Patient, Facility, and Caregiver Benefits

- Facilitates positioning for comfort and respiratory function.
- Tilt and recline provides ease of use for frequent re-positioning.
- Proper seating alignment decreases postural deviations.



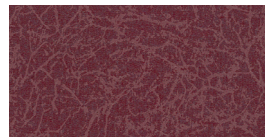
Comfort Tension Seating[®] increases support and sitting tolerance. It also aids in the maintenance of skin integrity.

**Industry-leading Positioning,
Versatility, and Function.**

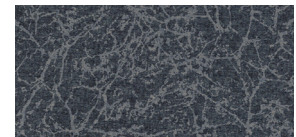
SPECIFICATIONS

US Medicare HCPCS*	E1161, E2201, E2202, E2203, E1255, E2231, E1028, E0961, E0971, E0990, E0955, E0956
Degrees of Tilt	40°
Degrees of Recline	15° Std (Up to 80° optional)
Mag Wheel Option	20" or 22" Rear mount, (50cm, 55cm)
Seat Widths Available	16", 18", 20", 22", 24", 26", 28" (40cm, 45 cm, 50cm, 55cm, 60cm, 65cm)
Seat Depths Available	15.5", 17", 18.5", 20" (37.5cm, 43cm, 46cm, 50cm)
Seat Heights Available	19", 20.5", 22", 23.5" (48cm, 51cm, 55cm, 59cm)
Front Casters	5" Front total lock (12.5cm)
Weight Capacity	350lbs / 159kg
Standard Padding	Lower side pads, upper side pads, seat and back pad with cover
Lifetime Warranty Frame	10 years on 16 Gauge tubular steel frame
Seat and Backrest	Broda Comfort Tension Seating® (Solid Seat Pan Upgrade Available E2231)

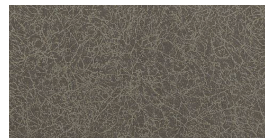
UPHOLSTERY OPTIONS



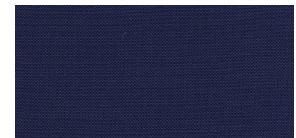
RENAISSANCE
BURGUNDY



RENAISSANCE
CHARCOAL

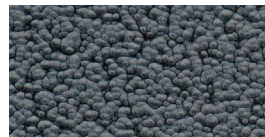


RENAISSANCE
METEOR

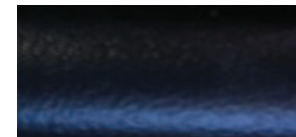


SILVERTEX
SAPPHIRE BLUE

FRAME OPTIONS



GREY
HAMMER



BLACK

COMMON ACCESSORIES

- Huntington's Special Padding (HSP) Package
- Additional Positioning Padding (APP) Package
- Full wrap vinyl seat and back covers
- Solid or clear tray (E0950)
- Upper Lateral Removable Mount (E1028)
- IV Pole (K0105)
- O² Holder (E2208)



Solid seat pan upgrade available.

*HCPCS codes supplied are for reference only and do not ensure coverage or payment. The HCPCS provided are based on our interpretation of the code definitions. HCPCS codes are not intended to be, no should be considered billing or legal advice. Providers are responsible for determining the appropriate billing codes when submitting claims to the Medicare Program and should consult an attorney or other advisor to discuss specific situations in further detail.