

# Dynamic Arm Support

---

The modular solution for elbow, forearm, and hands



 **Bodypoint**<sup>®</sup>  
STRENGTHEN YOUR POSITION

# PATENTED AND ADJUSTABLE SUPPORT

The clinically-developed Dynamic Arm Support is patented and adjustable, providing an option for intervention and prevention for the upper extremity following injury or neurological events. It provides three points of support at the elbow, forearm, and hand with a focus on preventing contractures, shoulder pain, and shoulder subluxation. The uniquely-shaped pads facilitate a functional and neutral position of the forearm and hand.

## Adjustable for Personalized Needs

- The hand block and forearm pad are adjustable in position to match the appropriate length of the user's arm.
- The entire hand block can rotate inwards and outwards to accommodate for specific positioning of the hand and wrist.



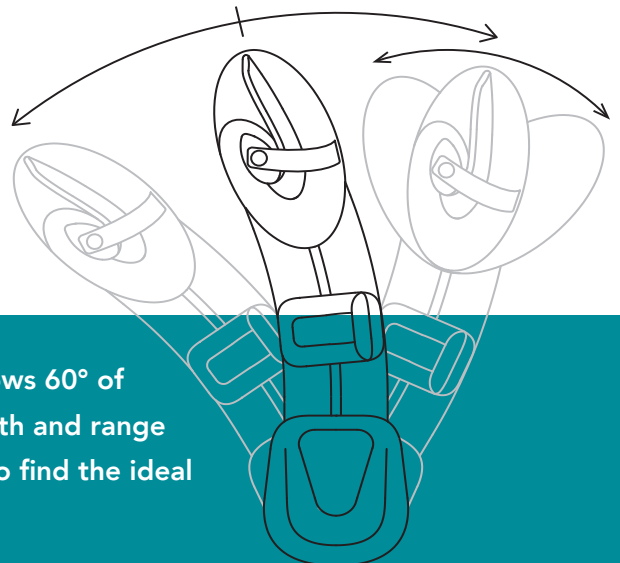
## 3 Vital Points of Contact

The arm support can be quickly set up according to the user's needs:

1. Elbow Pad
2. Forearm Pad
3. Hand Block

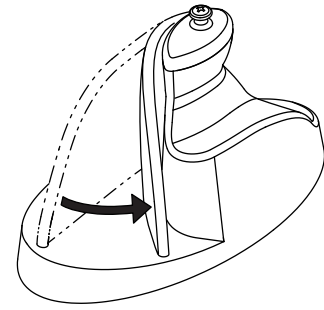
## DYNAMIC MOVEMENT

The pivot mechanism positioned under the elbow pad allows 60° of rotation, stimulating proprioception and increasing strength and range of motion. The position can also be locked in steps of 5° to find the ideal resting position for the user.



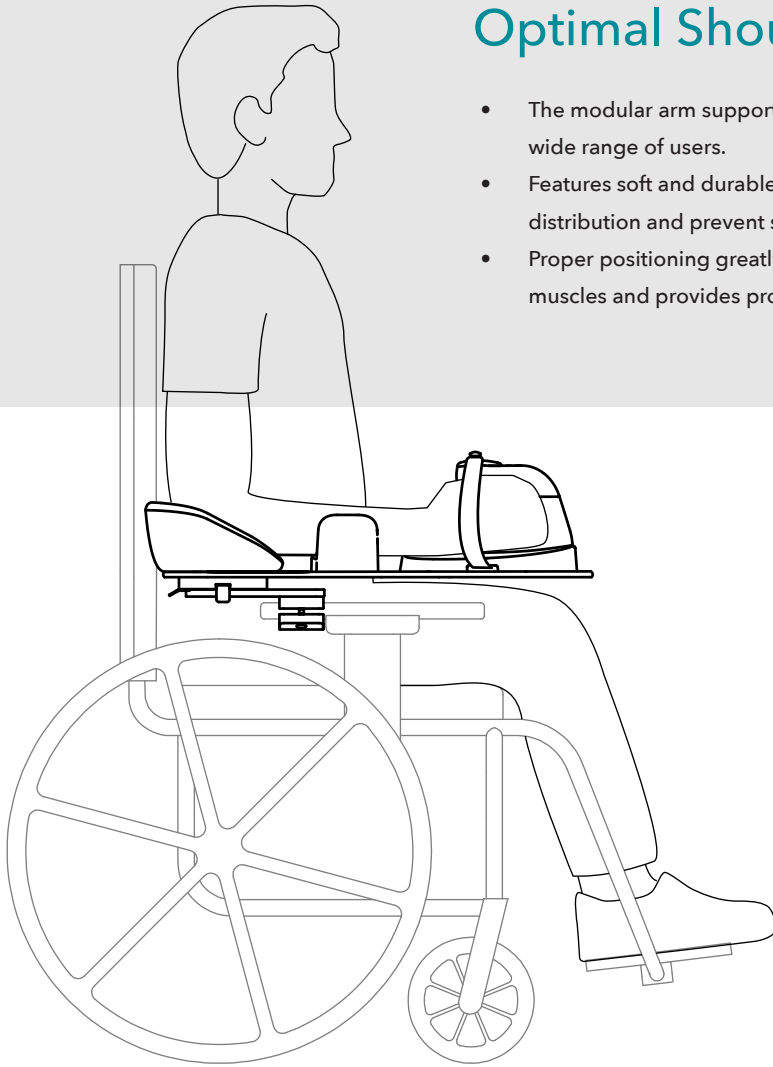
# Unique Flexible Hand Block

- The dynamic hand block design allows the fingers to flex, while encouraging the hand to return to a neutral position once the muscle tension releases.
- The thumb rests comfortably on the elevated section in a natural resting position.
- The padded strap goes over the metacarpophalangeal joints to keep the user's hand securely and comfortably in position.
- Adjust the wrist angle to accommodate the client's appropriate position.



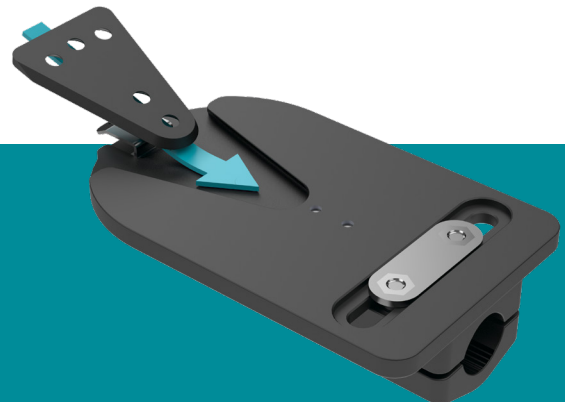
# Optimal Shoulder Positioning

- The modular arm support can be adjusted to accommodate a wide range of users.
- Features soft and durable foam to provide proper pressure distribution and prevent subluxation.
- Proper positioning greatly reduces the strain on the shoulder muscles and provides proprioceptive input.



# Forearm Pad

- The forearm pad is adjustable in both depth and angle to ensure proper contact and positioning.
- The forearm pad can be flipped (rotated 180 degrees) so that it can support the medial or lateral forearm.



# QUICK-RELEASE FUNCTION

- Unique Quick-Release Mechanism
- Easy Removal For Transfers
- Clicks Firmly In Place
- Strength-Tested, Solid Attachment

# Order in 3 Steps

- Step 1:** Indicate which arm is impacted: Left or Right
- Step 2:** Select the size of the hand block: Small or Large  
Measure the maximum length of middle finger: Small (8.5 cm-10.5 cm) or Large (10.5 cm-12 cm)
- Step 3:** Choose the type of armrest adapter required: Tubular or Flat  
Two sizes of Mounting Clamp to fit  $\varnothing$ 19 mm, 22 mm, and 25 mm tubing



At the heart of the Dynamic Arm Support was the desire to develop an easy-to-use and anatomically correct solution that would greatly reduce the risk for long-term upper extremity dysfunction and promote functional activity. The arm support can be utilized immediately after injury for optimal clinical outcomes.

Furthermore, the pivot mechanism allows for active range of motion (ROM) and the quick release mechanism allows for easy removal from the wheelchair armrest for safe and more convenient transfers.

With the choice of mounting clamps that accommodate for 19 mm, 22 mm, and 25 mm (3/4", 7/8", and 1") round tubing, or a more universal adapter that fits various flat armrests, the arm support can attach to most height-adjustable armrests.

