

User Guide

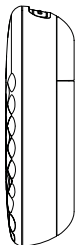
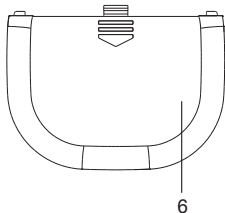
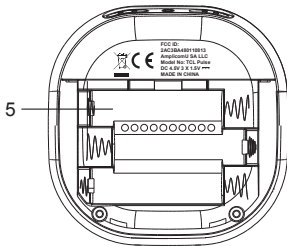
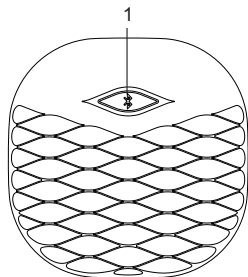
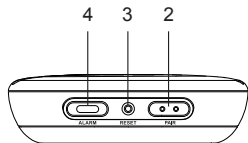
# TCL Pulse Ver 2.0



# Main Unit

## Location of Control

1. Snooze button / LED indicator
2. Pair
3. Reset
4. Alarm
5. Battery Compartment
6. Battery door



## Warranty

AMPLIFYZE equipment is produced and tested according to the latest production methods. The implementation of carefully chosen materials and highly developed technologies ensure trouble free functioning and a long service life. The terms of the warranty do not apply where the cause of the equipment malfunction is the fault of the telephone network operator or any interposed private branch extension system. The terms of the warranty do not apply to the rechargeable battery pack or power packs used in the products. The period of warranty is 12 months from the date of purchase. All deficiencies resulting from material of production faults which occur during the period of warranty will be eliminated free of charge. Rights to claims under the terms of warranty are annulled following intervention by the purchaser or third parties. Damage caused as a result of improper handling or operation, incorrect positioning or storing, improper connection or installation, Acts of God or other external influence are not covered by the terms of warranty. In the case of complaints, we reserve the right to repair or replace defect parts or provide a replacement device. Replacement parts or devices become our property. Rights to compensation in the case of damage are excluded where there is no evidence of intent or gross negligence by the manufacturer. If your equipment shows signs of defect during the period of warranty, please return to the sales outlet in which you purchased the AMPLIFYZE equipment together with the purchase receipt. All rights to claims under the terms of warranty in accordance with this agreement must be asserted exclusively with regard to your sales outlet. ONE year after the purchase of our products, claims under the terms of warranty can no longer be asserted.

## Features

### FCC Statement

This device complies with Part 15 of the FCC rules. Operation is subject to the following two conditions: (1) This device may not cause harmful interference, and (2) This device must accept any interference received, including interference that may cause undesired operation.

Warning: Changes or modifications to this unit not expressly approved by the party responsible for compliance could void the user's authority to operate the equipment.

NOTE: This equipment has been tested and found to comply with the limits for a Class B digital device, pursuant to Part 15 of the FCC Rules. These limits are designed to provide reasonable protection against harmful interference in a residential installation. This equipment generates, uses and can radiate radio frequency energy and, if not installed and used in accordance with the instructions, may cause harmful interference to radio communications.

However, there is no guarantee that interference will not occur in a particular installation. If this equipment does cause harmful interference to radio or television reception, which can be determined by turning the equipment off and on, the user is encouraged to try to correct the interference by one or more of the following measures:

- Reorient or relocate the receiving antenna.
- Increase the separation between the equipment and the receiver.
- Connect the equipment into an outlet on a circuit different from that to which the receiver is connected.
- Consult the dealer or an experienced radio/TV technician for help.

### Japan Radio Law Statement

This product contains the certified module by Japan Radio Law. The certification number is  018-140077.  
BAC

Thank you for purchasing the Vibration Alarm. This product is designed as a Vibration Alarm by working with your mobile devices.

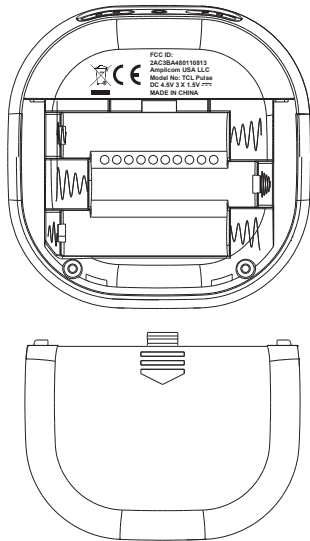
- Support Bluetooth version 4.0.
- Set wake up buzzer alarm or vibration alarm with snooze function, up to 10 alarms.
- Take full control of the Vibration Alarm with device app via Bluetooth Low Energy.
- Selectable alarm tone pattern and volume to different alarms.
- Set count down timer.
- Monitor the battery status of the Vibration Alarm and have low battery warning if it is at low level.

Before you start using it

- Please make sure to read the instruction manual carefully.
- Following and respecting the instructions in your manual will prevent damage to your instrument and loss of your statutory rights arising from defects due to incorrect use.
- We shall not be liable for any damage occurring as a result of non-following of these instructions. Likewise, we take no responsibility for any incorrect readings and for any consequences which may result from them.
- Please take particular note of the safety advice!
- Please keep this instruction manual for future reference.

# Getting Started

1. Install battery:
  - 1.1 Open the battery compartment.
  - 1.2 Insert 3 x AAA batteries in polarity (+) and (-) as indicated.
  - 1.3 Close the battery compartment.



2. Download and Install TCL Alarm app on your device.
  - 2.1 Access App Store or Google play search for TCL Alarm
  - 2.2 Select and install TCL Alarm App on your device.



## Disposal of Your Old Product

Your product is designed and manufactured with high quality materials and components, which can be recycled and reused. When this crossed-out wheeled bin symbol is attached to a product it means the product is covered by the European Directive 2002/96/EC.

Please inform yourself about the local separate collection system for electrical and electronic products.



Please act according to your local rules and do not dispose of your old products with your normal household waste. The correct disposal of your old product will help prevent potential negative consequences for the environment and human health.

## Disposal of Flat Batteries / Accumulators

You, as the end user, are legally obliged (**Battery Ordinance**) to return all flat batteries and rechargeable batteries.

**Disposal in the household waste is prohibited.**

"European Directive 2006/66/EC" Batteries, including rechargeable batteries, which contain hazardous substances are marked by symbols which indicate the prohibition of disposal in the household waste.

The designations for the heavy metals concerned are as follows:

**Cd** = cadmium, **Hg** = mercury, **Pd** = lead. You can return flat batteries / rechargeable batteries free of charge to the collection points in your community or anywhere where batteries / rechargeable batteries are sold.

**You thus fulfil your statutory obligations and help protect the environment.**



## Caution

Replace only with the same or equivalent type of battery, please refer to the engraved battery marks inside the battery compartment for the correct battery polarity (+) and (-). Danger of explosion is possible if battery is incorrectly replaced.

This product complies with the requirement of the 1999/5/EC directive.

Use this unit and mobile phone only in environments with ambient temperatures between 0°C and 40°C(32~104°F).

The maximum operating temperature of the unit is 40°C

## Care of Your Vibration Alarm

The unit shall not be exposed to dripping or splashing.

Do not expose the unit and batteries to humid, rain, sand or excessive heat caused by heating equipment.

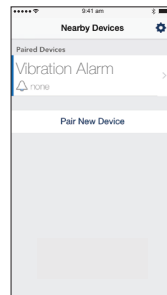
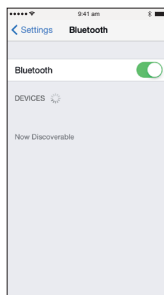
No objects filled with liquids, such as vases, shall be placed on the unit.

No naked flame sources, such as lighted candles, should be placed on the unit.

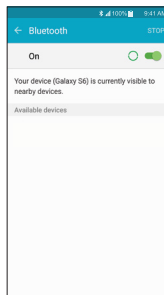
To clean the set, use a soft dry cloth. Do not use any cleaning agents containing alcohol, ammonia, benzene or abrasives as these may harm the housing.

## Pairing the Vibration Alarm

3. Pair the Vibration Alarm with TCL Alarm app.
- 3.1 Before running the TCL Alarm app, make sure the Bluetooth is turned ON at your device.
- 3.2 After you tap the app icon  the 'Nearby Devices' screen appears. You need to pair the Vibration Alarm device before you enter the main app screen.

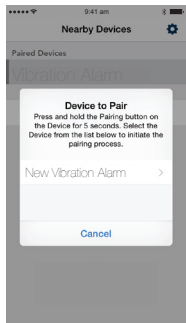
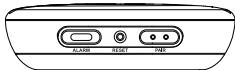
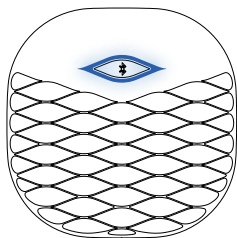


iOS Version

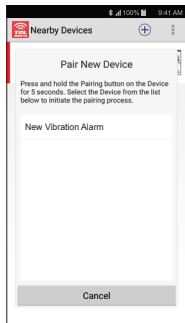


Android Version

## Pairing the Vibration Alarm



iOS Version

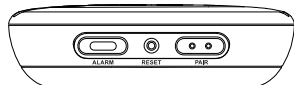


Android Version

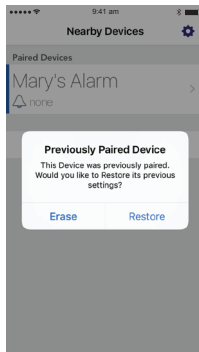
- 3.3 Tap " Pair New Device" to search for nearby devices.
- 3.4 Press and hold the [PAIR] button on the Vibration Alarm device for 5 seconds. You can find the flashing LED will turn from red to blue.
- 3.5 The New Vibration Alarm will be displayed on App and is ready for pairing. Tap the "New Vibration Alarm" will start the pairing and connection process. Once the Vibration Alarm is paired, it will start time and data synchronization.

## Reset the Vibration Alarm

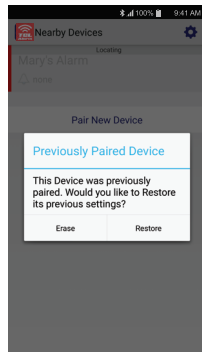
12. Reset the Alarm



If the Vibration Alarm is not working properly, press RESET button to reset the unit. During reset, the LED flashes twice in (purple)color and the Vibration Alarm vibrates twice. Then the LED will flash once per 6 seconds in red color.



iOS Version



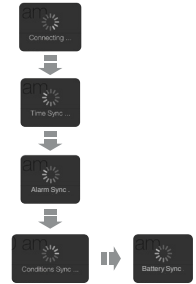
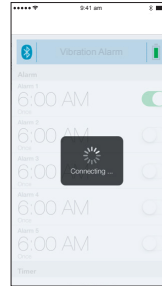
Android Version

Reset the unit will break the connection and clear the data in your unit. Repeat step 3.3 - 3.5 to reconnect the unit. If the unit has connected your mobile device before, you can select "Restore" to resume all setting and data or select "Erase" to start all from scratch.

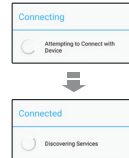
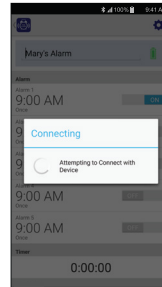
## Preference

- 11.2 Alarm Sound Duration: The alarm duration. User can set from 1 to 15 minutes.
- 11.3 Auto DST update: It will adjust Daylight Saving Time (DST) automatically based on your ideoice time zone setting. The alarm clock will be automatically one hour ahead of Standard Time in summer time and will be back to the normal Standard Time when back to winter time, according to your ideoice's time zone.
- 11.4 Tap [Done] to save the setting or Tap [Cancel] to restore the setting.

## Pairing the Vibration Alarm



iOS Version

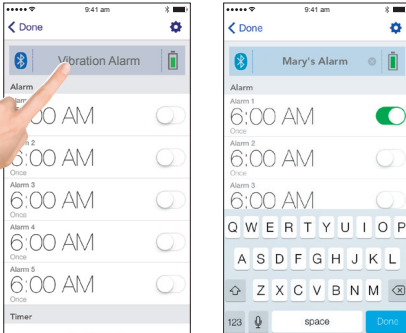


Android Version

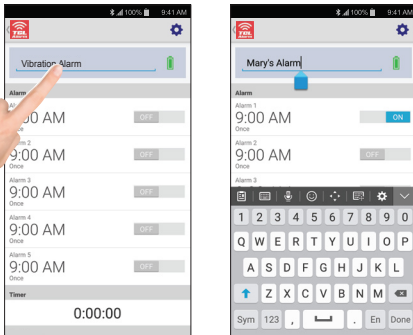
- 3.6 Once connected, the following information will be synchronized:
  - i) Current time and date
  - ii) Alarms & timer setting
  - iii) Unit battery level
- 3.7 One Vibration Alarm unit can pair one device each time.
- 3.8 One device can pair up to 5 Vibration Alarm units.

# Rename the Vibration Alarm

4. Rename the device.  
Tap the device name (default is "Vibration Alarm") at the top of the screen to edit the Vibration Alarm device name.





iOS Version

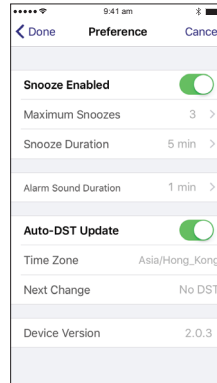


Android Version

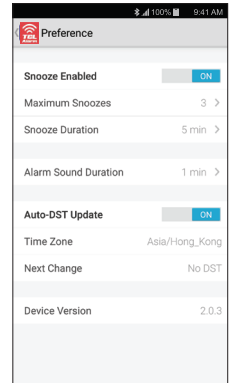
# Preference

11. Preference setting

Tap the  /  to enter the Preference screen. You can edit and adjust the following items on this screen.



iOS Version



Android Version

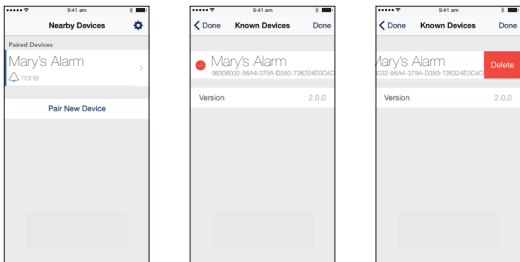
- 11.1 Snooze Enabled: Tap to enable/disable Snooze function. If "Snooze Enabled" is ON, you can set:

**Maximum Snoozes:** The number of times to repeat the snooze function. User can set Unlimited or values from 1 to 9.  
**Snooze Duration:** The time interval between snoozes. User can set from 1 to 15 minutes.





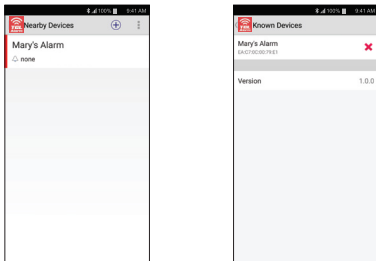
## Delete Paired Vibration Alarm Unit

### 10. Delete the Vibration Alarm unit.



iOS Version

Tap  at Nearby Devices screen to enter the Known Devices page. By tapping "Edit" and then the , you can select "Delete" to erase any paired Vibration Alarm unit.



Android Version

## Battery Status Indicator

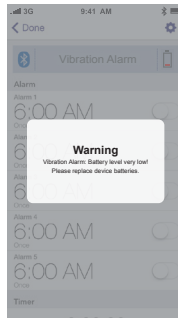
### 5. Battery status indicator

It indicates the battery level of your Vibration Alarm device. While the battery level drops below 20%, the battery icon is in red status and a low battery warning will pop up to remind battery replacement.

Above 60% 

Between 20% ~ 60% 


Below 20% 

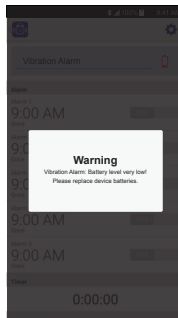


iOS Version

Above 60% 

Between 20% ~ 60% 

Below 20% 

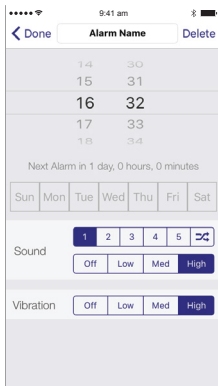


Android Version

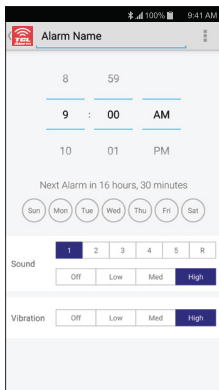
## Setting the Alarm Time

### 6. Setting the alarm time

- 6.1 Tap [New Alarm] to create a new alarm or tap the existing alarm to modify.



iOS Version



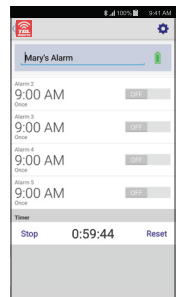
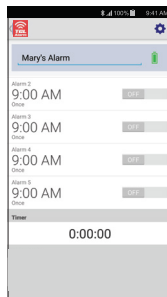
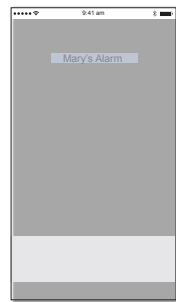
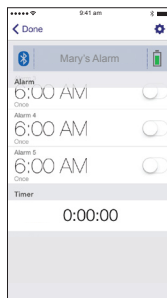
Android Version

- 6.2 On alarm setting screen, you can edit and adjust the item below:
- Alarm Name: Tap to edit your preferred name to this alarm.
  - Time: Scroll up and down to adjust the alarm time.
  - Day of Week: Tap to select which day of week to enable the alarm.
    - If none is selected, it alarms once only.
    - If all days are selected, it alarms daily.
  - Sound pattern: Tap to select which tone pattern (5 options plus one random pattern available) is applied to this alarm.

## Setting the Timer

### 9.2 Using the Timer

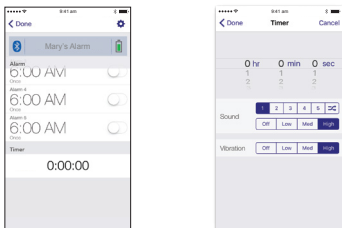
In the Home screen, tap "Start" under Timer to start counting.



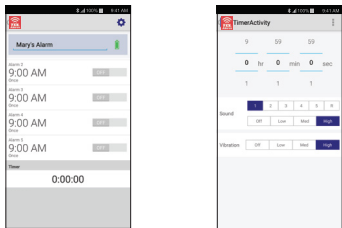
Tap "Stop" to stop counting and "Start" to start counting again.  
Tap [Reset] to reset the time duration value.

## Setting the Timer

9. To set the timer  
Tap timer on main screen to go into setting screen.



iOS Version



Android Version

- 9.1 You can edit and adjust items below on this screen.

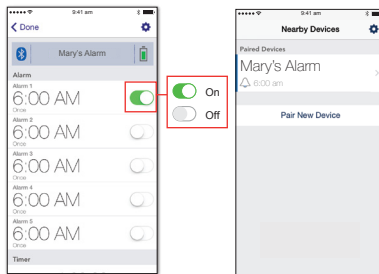
- Timer period:  
Scroll up and down to adjust the timer duration.
- Sound pattern:  
Tap to select the tone pattern (5 options plus one random pattern available).
- Sound volume level:  
Tap to select the sound volume level (Four options: Off, Low, Med and High).
- Vibration:  
Tap to select the vibration strength (Four options: Off, Low, Med and High).

## Setting the Alarm Time

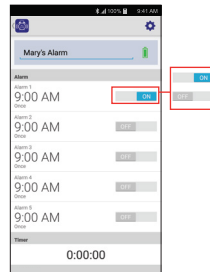
- Alarm volume level: Tap to select the alarm sound volume level (three options: Low, Med and High).
- Vibration strength: Tap to select the vibration strength (four options: Off, Low, Med and High).

### 6.3 Complete the alarm setting.

- Tap [Done] to save the alarm setting and go back to main screen.
- Tap [Cancel] to restore to the original alarm setting and go back to main screen.
- Tap [Delete Alarm] to delete the current alarm and go back to main screen.



iOS Version



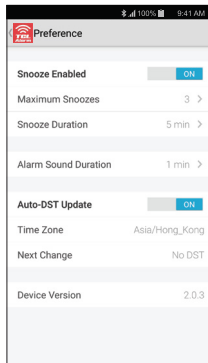
Android Version

## Snooze Operation

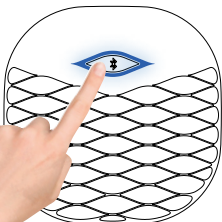
- Using the SNOOZE function
  - When the alarm sounds, press [Snooze] and alarm will repeat every 5 minutes up to three times.
  - Above default value can be adjusted by setting the "Maximum Snoozes" and "Snooze Duration" in the preference screen.



iOS Version

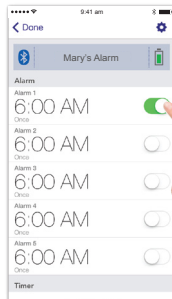
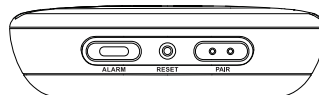


Android Version

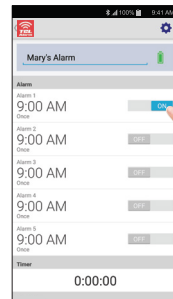


## To Turn Off the Alarm

- To disable the alarm



iOS Version



Android Version

- When alarm sounds, press [Snooze] once to stop the alarm and activate the snooze function, or press [Alarm] to disable the alarm completely.
- If no button is pressed, the alarm will sound for 1 minute and stop automatically. If Snooze Enabled setting is ON, the alarm will repeat every 5 minutes. You can press the [Snooze] button to stop the alarm, or can press [Alarm] button to turn off the alarm and stop the snooze function completely.
- User can tap the alarm time to disable the alarm completely ( Please make sure your app is paired with the device)