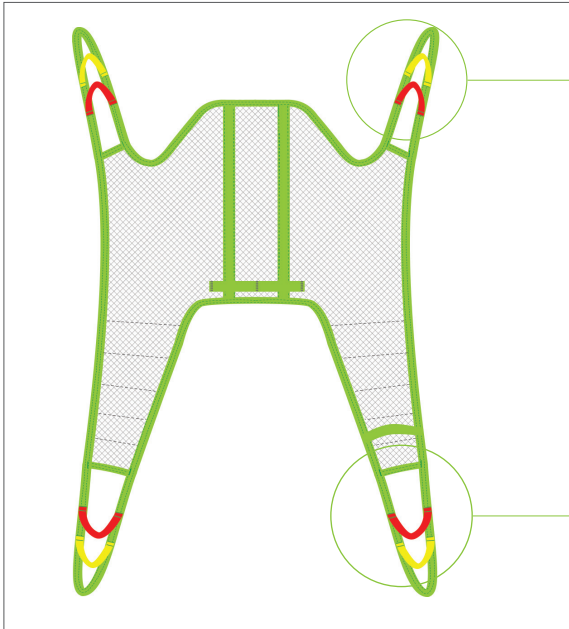




Fitting Protocol

Bath Sling
Model 25035



- Green Strap
- Yellow Strap
- Red Strap

Extension Loops

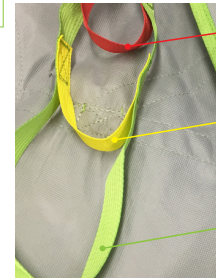
- 21180-10 (10cm/3.9")
- 21180-15 (15cm/5.9")
- 21180-20 (20cm/7.8")
- 21180-25 (25cm/9.8")
- 21180-35 (35cm/13.7")

- Green Strap
- Yellow Strap
- Red Strap

Extension Loops

- 21180-10 (10cm/3.9")
- 21180-15 (15cm/5.9")
- 21180-20 (20cm/7.8")
- 21180-25 (25cm/9.8")
- 21180-35 (35cm/13.7")

Choose the loop combination that will give the most comfortable and safe suspension angle, keeping in mind the patient's ability to support themselves.



- Red Strap**
Upright Position
Least hip angle
- Yellow Strap**
Semi-Recumbant
Mid-hip angle
- Green Strap**
Increased Recline
Less hip flex and greatest angle

Match colours on both sides of the patient for a 90 degree angle in the hips.

Maximum User Weight: 250kg/551lb

Model 25035 - Polyester Net

Transfer Situation:

- To/From a Bed
- To/From a Chair
- Showering/Bathing

Available sizes:

Indicate size required

- JS
- JM
- S
- M
- L
- XL

Leg Placement:

- Divided relaxed position
- Open position
- Divided position
- Closed position

Suspension:

- 2-Point
 - 4-Point
 - 3-Point
- Not available for this sling**

Accessories required:

- 21146 Leg Padding - Small
- 21146 Leg Padding - Medium
- 21146 Leg Padding - Large
- 25102 Reinforced Leg Support - One Size
- 25145.* Waist Belt (Velcro)

*Junior Sizes	*Adult Sizes
-40B (40cm/15.7")	-60 (60cm/23.6")
-50B (50cm/19.7")	-70 (70cm/27.6")
-60B (60cm/23.6")	-80 (80cm/31.5")
	-90 (90cm/34.4")
	-100 (100cm/39.4")
	-110 (110cm/43.3")
	-120 (120cm/47.3")
	-130 (130cm/51.2")
- 25146.* Waist Belt (Safety Buckle)

Size (eg. -60B)
<input style="width: 50px; height: 20px;" type="text"/>

*only for Model #25146

Patient Information:

Name	
Facility	Room
Lift Used	Hanger Bar Used

The Bath Sling can be used in most lifting situations and fits most patients but is most suitable for wet environments. Made of Polyester Net fabric, it dries quickly and can be left behind the patient for a short period of time after the transfer is complete, making it an ideal option for bathing or showering. It is a soft, comfortable material that can also be used for rehabilitation in pool areas. The Bath Sling creates an upright seating position and can be used with or without a back belt.

Additional Instructions

To staff/caregiver:

To patient:

Fitting Protocol Completed by:

Name	
Date	Position/Title



Important! This fitting protocol does not replace the user manual. Read all instructions before use!