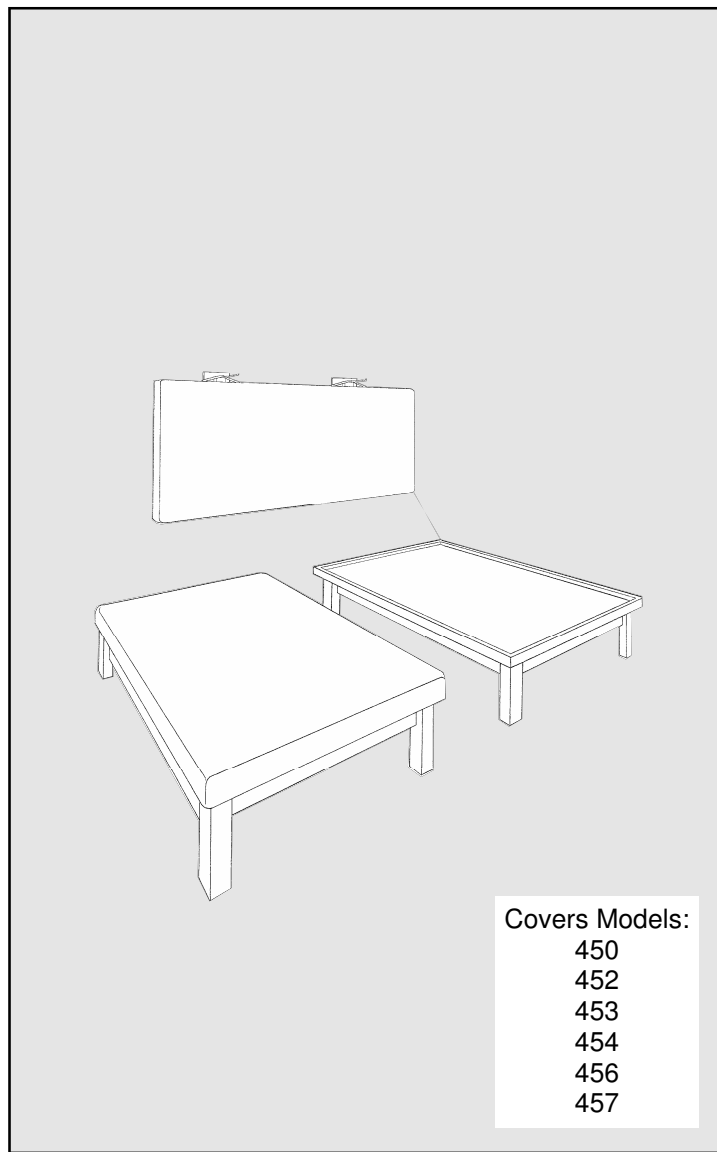


450 Series Stationary Mat Table Product Manual



BAILEY

C0818

BAILEY MANUFACTURING COMPANY
800-321-8372 • FAX: 800-224-5390
Mail: P.O. Box 130, Lodi, OH 44254-0130
Shipments: 118 Lee St., Lodi, OH 44254
www.baileymfg.com

Important Read This First

Bailey Manufacturing Company is proud of the reputation we have earned as a leader in the physical, occupational, and sports medicine industry for over 60 years. Our products are made from the highest quality materials and built in the USA by skilled craftsmen.

Prior to shipping, this product was thoroughly inspected to ensure the highest quality standards and your total satisfaction. If you experience any problems, please follow the instructions outlined in the Warranty & Support Section of this manual. Contact either your dealer or Bailey at 1-800-321-8372.

Please take a moment now and record the following information for future reference:

<i>Date of Purchase [delivery date]:</i>
<i>Bailey Dealer:</i>
<i>Packing Slip #:</i>
<i>Serial Number:</i> <i>Date of Manufacture:</i>

Contents:	Pages:
Product Section	4 thru 13
General Information	4
Parts	5, 6
Assembly	6 thru 10
Safety	10
Operation	10
Accessories	11, 12
Maintenance & Cleaning	13
Troubleshooting	13
Inspection & Service Logsheet	18
Warranty & Support Section	14 thru 17
Warranty Terms	14
Product Support & Assistance	15
Damage & Loss In Transit	16
Returns	17

General Information:

Read entire Product Manual before using this product. If you have any questions regarding the following information, please contact a Bailey Customer Service Representative at 1-800-321-8372.

Features & Specifications, Raised Rim Models 450[4'x7'], 452[5'x7'], 453[6'x8']:

- Durable, laminated table surface with rounded, solid hardwood raised rim, legs and aprons.
- Convenient 18" total fixed height [without accessory mats].
- Protective clear plastic trim prevents damage to table top from prosthesis and wheelchairs.
- Extra center legs [Models 452 & 453 only] for added support and stability.
- Maximum static load capacity of 500 lb. / 227 kg.

Features & Specifications, Upholstered Models 454 [4'x7'], 456[5'x7'], 457[6'x8']:

- Nylon reinforced Herculite® 20 upholstery meets flammability specifications of Federal Standard 191A.
- High density, 2" thick anti-bacterial foam padding for patient comfort.
- Convenient 20" total fixed height.
- Protective clear plastic trim prevents damage to table top from prosthesis and wheelchairs.
- Extra center legs [Models 456 & 457 only] for added support and stability.
- Maximum static load capacity of 500 lb. / 227 kg.

Options & Accessories For Mat Tables:

- Optional durable vinyl upholstery, available at an extra charge, meets flammability specifications of Boston Fire Code BFD IX-1 and California Bulletin 117, Sec. E.
- Optional accessory mats for Raised Rim Tables, Models 51[4'x7'x2"], 53[5'x7'x2"], and 54[6'x8'x2"].
- Optional accessory wall mounted Mat Hanger Model 741 [2 ea. required] holds up to four of the above mats and

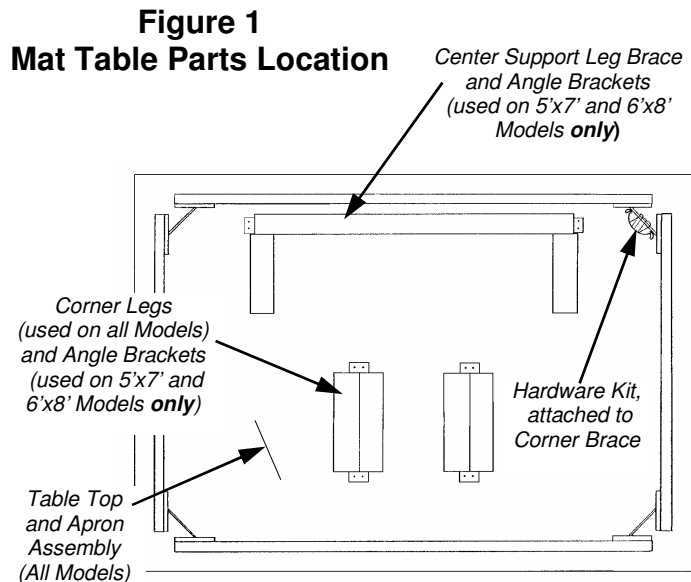
Parts:

Your new Stationary Mat Table is shipped “knocked down”, with all hardware and parts needed for final assembly. Inspect the unit carefully, immediately upon removal from packaging, to ensure that the unit is in good condition and all materials are present before starting assembly.

Note: Bailey Manufacturing Company waives any responsibility for concealed freight damage not reported within five (5) days of receiving shipment.

Refer to Product Warranty and Support Section of this Manual for more information.

Read entire Product Manual before assembling or using this product. Check Parts Location Diagram below [Figure 1] and parts list on page 6 to verify receipt of all material.



Parts [cont'd]:

Refer to Figure 1 on Page 5 and identify the components. Remove Hardware Kit and Legs, which are fastened to the back of the Table Top for shipping. Save all screws and Angle Brackets for later use.

The following Hardware Kit is packaged in a poly bag with the Table:

- (4) EA. # 2401 Lag Bolt, 3/8 x 4"
- (4) EA. # 3597 Lockwasher, 3/8
- (4) EA. # 3610 SAE Flatwasher, 3/8
- (4) EA. # 3220 2" x #10 Flat Head Wood Screw (5'x7' & 6'x8' only)
- (4) EA. # 16625 Plastic Bumper (5'x7' & 6'x8' only)

The following parts and hardware are fastened to the back of the Table:

- (4) EA. Mat Table Corner Legs
- (1) EA. Center Support Leg Brace (5'x7' & 6'x8' only)
- (6) EA. # 13007 2" Angle Bracket (5'x7' & 6'x8' only)
- (24) EA. #3290 3/4" x #10 Hex Head Tapping Screws (5'x7' & 6'x8' only)

Note: All Angle Brackets and Tapping Screws fastened to the back of 4'x7' Tables, are used to retain the Corner Legs during shipment only. They are not needed for assembly and may be discarded. All brackets and screws fastened to the back of 5'x7' and 6'x8' Tables ARE needed, and must be saved for reuse.

Assembly:

The following minimum tools are required:

- 9/16" Wrench
- Slotted Blade screwdriver

Any of these additional tools will make assembly easier:

- 9/16" socket and drive ratchet
- 5/16" socket and drive ratchet or 5/16" nutdriver

Assembly [cont'd]:***For all Models [Figure 2, page 8]:***

Place the Table Top and Apron Assembly upside down on a smooth, clean surface. Place one Corner Leg in each corner at the gap in the Apron, with the notch and starter hole facing inside towards the Corner Brace. Attach each of the four (4) Corner Legs using one (1) Lag Bolt, Lockwasher and Flatwasher as shown in Figure 2. Tighten each Lag Bolt gradually and in sequence between the four corners until the Lockwasher flattens out and the Corner Leg is drawn securely into the Apron gap. *Note: tightening each corner fully before starting the next one may result in a warped or distorted Table. If this occurs, loosen all Lag Bolts until Table flattens out, and gradually retighten Lag Bolts in sequence.*

For 5'x7' and 6'x8' Models only [Figure 3, page 9]:

Attach the Center Support Leg Brace, referring to Figure 3 below. With the Table upside down and the Corner Legs installed, position the Brace in the center of the Table. Align the notches and predrilled holes in the Brace legs with the predrilled holes in the Apron. Install the four (4) Flathead Wood Screws in these predrilled holes and tighten.

After installing the Wood Screws through the Apron, attach the six (6) Angle Brackets, three (3) on each side of the Support. Determine location using predrilled holes in the Support and Table Top. Install Brackets using four (4) Hex Tapping Screws per Bracket, and tighten. Ensure that the Support fits as flush against the Table Top as possible. Adjust Brackets as necessary to achieve best fit.

For all Models:

Turn Mat Table upright and place in location to be used. The floor should be flat and level as possible.

For 5'x7 and 6'x8' Models only [Figure 4, page 10]:

If either of the Center Legs do not touch the floor, shim to required height using Plastic Bumpers attached to the bottom surface of the Center Leg(s). Install using a soft mallet.

Check all fasteners and components for proper tightness and fit. Your Mat Table is ready to use.

Figure 2
Mat Table Corner Leg Assembly

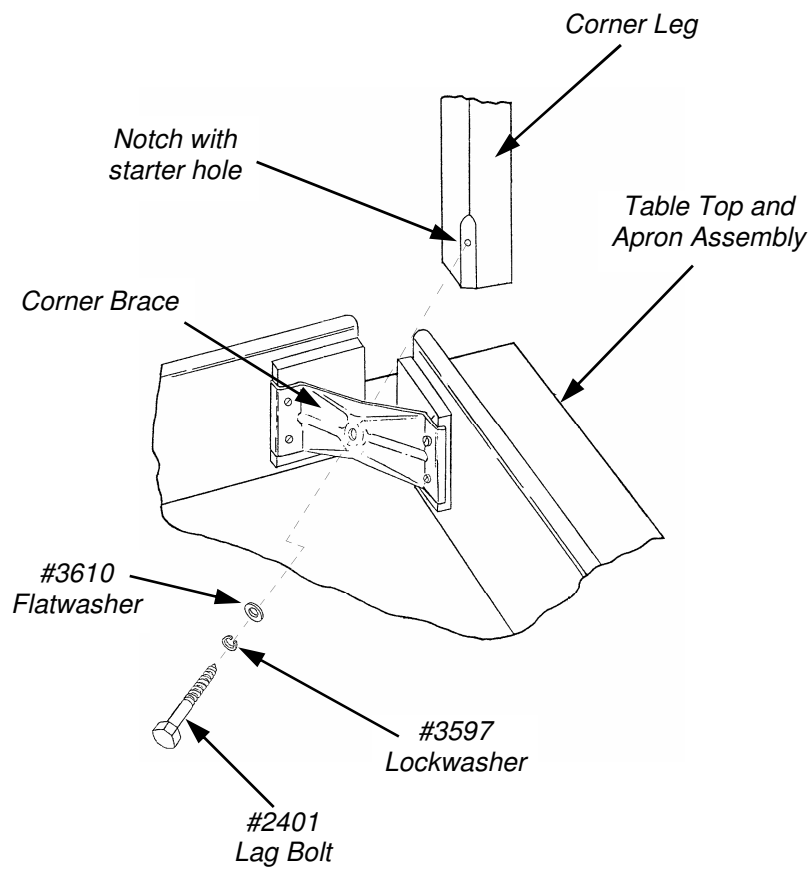


Figure 3
Mat Table Center Support Leg Brace Assembly
(5'x7' & 6'x8' only)

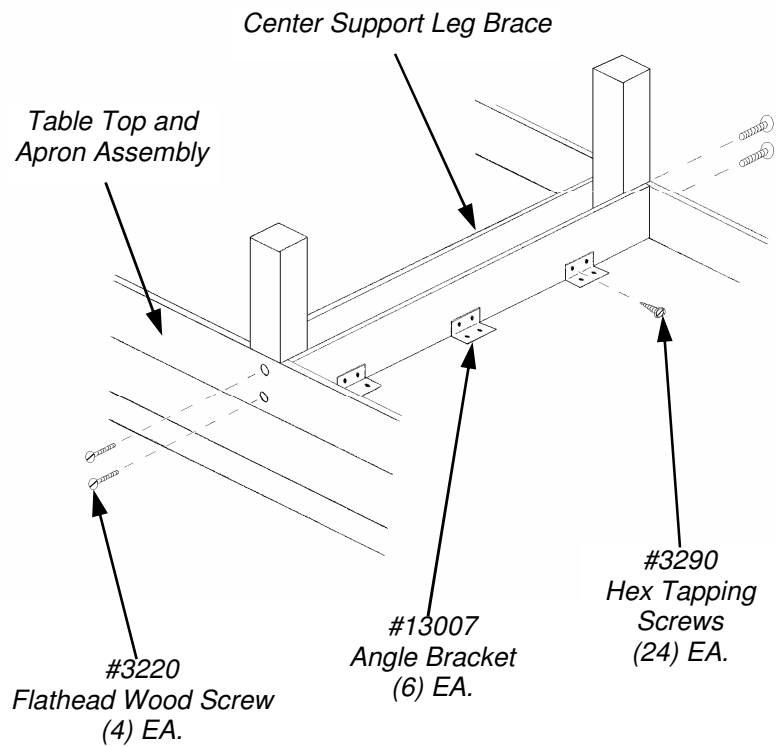
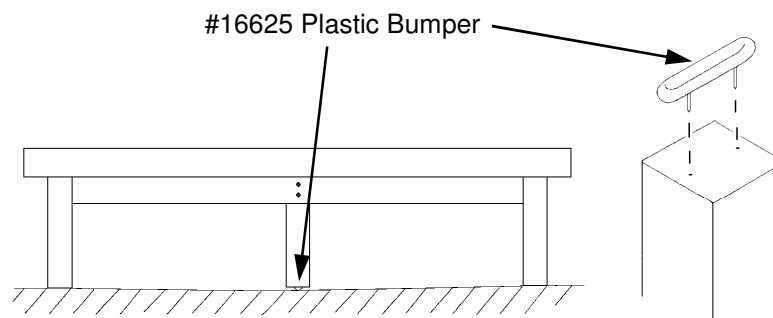


Figure 4
Shimming Mat Table Center Leg(s)
(5'x7' & 6'x8' only)



Safety:

Be safe! Never attempt to assemble or move a table yourself; always seek assistance. Avoid placing the table against walls or in contact with other equipment in order to eliminate pinch points. Always observe Table Static Load Ratings as stated on page 4.

Operation:

Mat tables may be grouped together to form larger areas for treatment or exercise. Removable mats may be used with or without Tables. Raised Rim models may be used without mats for activities that might otherwise damage upholstery.

***Accessory Installation & Operation
[refer to Figure 5, page 12]:******Vinyl Upholstery:***

This optional accessory is installed at the factory. Observe proper care and maintenance procedure on page 13. Both Herculite and vinyl upholstery are replaceable in the field.

Models 51, 53 & 54, Removable Mat for Raised Rim Mat Tables:

These 2 inch thick optional mats are covered in the same upholstery as mat tables, using standard Herculite or optional vinyl. They feature side zipper closure for easy foam replacement

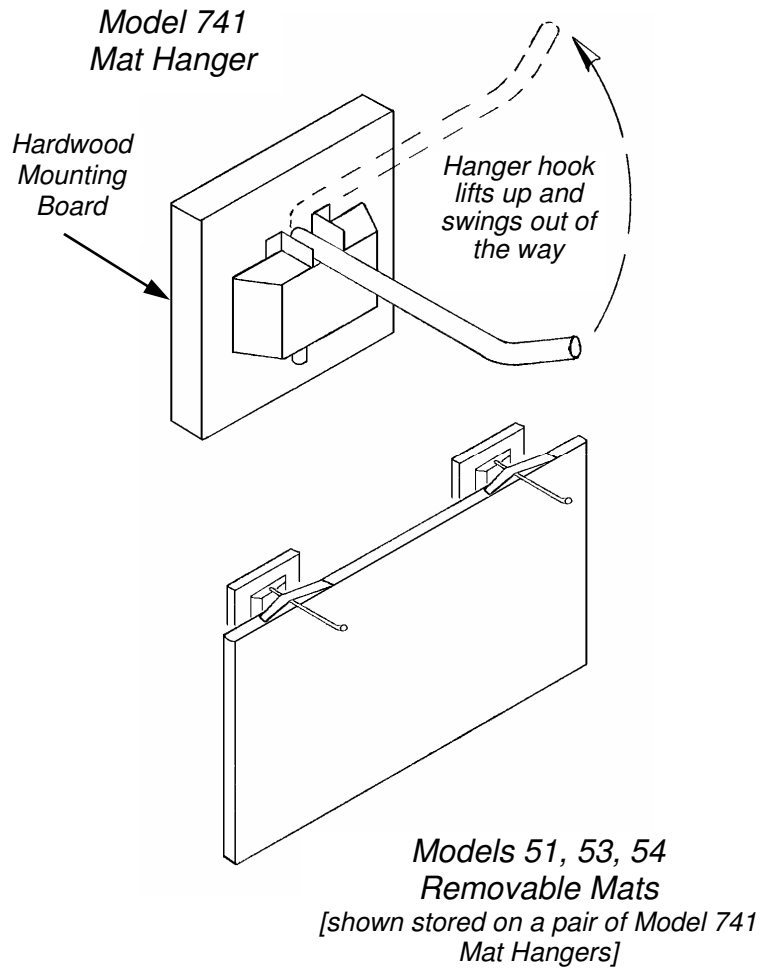
Model 741, Wall Mounted Mat Hanger:

The optional Mat Hanger is shipped assembled, ready to mount to a wall. Store up to four 2 inch thick, 6' x 8' removable mats on a pair of these space saving hangers. When not in use, the hanger hook lifts up and swings to the side.

Determine proper mounting location based upon size of mats and preference.

Note: Due to wide variances in wall and building construction, no mounting hardware or specific mounting recommendations are provided. Consult an installation contractor or design professional who is familiar with your particular wall construction and materials. They can ensure compliance with the Uniform Building Code and any applicable local codes.

Figure 5
Mat Table Accessories



Maintenance & Cleaning:

Regularly inspect components for wear and proper adjustment. Should the unit need attention, remove from service until the unit is returned to its original condition. A convenient Inspection and Service Logsheet is provided on page 18 for recordkeeping.

To help keep your table in good condition, clean as required using **abrasive free** and **solvent free** products. Test any cleaner or disinfectant on a small, inconspicuous location before using. Discontinue use if surface softens, discolors, or loses gloss.

Never use any cleaners or disinfectants containing solvents on product surfaces. Check their Material Safety Data Sheet and consult the manufacturer with any questions. Some chemicals will severely shorten the life of your vinyl upholstery and lacquer coated finishes.

For light soiling, upholstery manufacturers recommend liquid dish soap and water, or liquid cleanser and water applied sparingly with a soft bristle brush. For difficult stains or disinfection, use a solution of 10% household bleach [sodium hypochlorite] and 90% water applied sparingly with a soft white cloth. Rinse with water dampened cloth to remove any remaining soap, cleanser or bleach solution.

Troubleshooting:

Your new Stationary Mat Table will provide years of reliable service. In the event the Table does not function correctly, inspect all components for tightness and proper condition.

For detailed information or component replacement, contact Bailey Customer Service at the number on this page. **Have your date of purchase and Bailey Dealer information handy for faster service.**

Five Year Limited Warranty:

Bailey Manufacturing Company warrants the products we manufacture to be free of defects in materials, workmanship, or design under normal use and service conditions for five years after the date of original purchase (two years for Bailey Basics). Resale products and components manufactured by others will carry the warranty of the manufacturer. If the product and/or equipment should become defective within the designated warranty period, Bailey Manufacturing Company will repair or replace it (at our option) free of charge, including return transportation to you, provided you deliver the equipment or product prepaid to Bailey Manufacturing Company at 118 Lee Street, Lodi, Ohio 44254. Please receive "authorization" before returning product to the factory, as Bailey Manufacturing Company will not accept collect shipments. Bailey Manufacturing Company reserves the right to repair or replace component parts without return of the entire unit.

This warranty does not include damage resulting from accident, abuse, or misuse of the product and expressly excludes normal wearing of parts or defect caused by transportation, accident, fire, flood, alteration, or negligence.

Bailey's warranty liability is limited to that stated above; other than the warranty stated above, there are no warranties expressed or implied. Bailey will have no responsibility for consequential or incidental damages.

Product Support:

Bailey Manufacturing Company is totally committed to producing the finest quality physical, occupational, and sports medicine products. Our goal is your total satisfaction. If you experience any problems, please feel free to contact a Bailey Customer Service Representative at 1-800-321-8372 between the hours of 8:30 AM and 4:30 PM Eastern Time weekdays.

The following information is provided to help ensure that your experience with Bailey is a positive one. Please read this information carefully before you unpack or begin assembly.

Thank you for purchasing a Bailey manufactured product. Please take some time to register your purchase with us and answer a few simple questions. This information will enable us to improve our products and services for you in the future.

If You Need Assistance:

To provide the best possible service to our customers and dealers, warranty claims should be made directly to Bailey. Since Bailey is in the best position to solve the customer's problem, it will speed up the process and help ensure total customer satisfaction.

Should you encounter any problem with our products or services, please contact a Bailey Customer Service Representative at 1-800-321-8372 between the hours of 8:30 AM and 4:30 PM Eastern Time, weekdays. Please have the date of purchase and Bailey dealer information recorded inside the front cover of this manual, or a copy of your packing list available to help our customer service representative provide you with the fastest service. In most cases, you will also want to notify your dealer to enable them to provide any further assistance.

Damage or Loss in Transit:

All of our equipment is thoroughly inspected and carefully packed before leaving our plant. It is receipted for by the carrier as having been shipped in good condition. Any loss or damage which occurs to the equipment in route will be solely through negligence of the carrier and all claims must be filed directly with the carrier. Important; If a shipment is delivered to you in a visibly damaged condition or in a quantity that is less than is enumerated on the Bill of Lading or delivery receipt, insist on a notation of this damage or shortage by the delivering carrier's agent on the delivery receipt or freight bill. When a shipment has been delivered to you in apparent good condition, but upon opening the containers or crate, damage is discovered, notify the delivering carrier immediately upon discovery. This notification must be made within 2 days of receipt of the shipment. Insist upon an inspection and inspection report. You must retain all packaging, including the carton or crate in which the damaged item was shipped, until inspection has been made. All claims must be made by you, the consignee, directly to the carrier or its agents.

Returns:

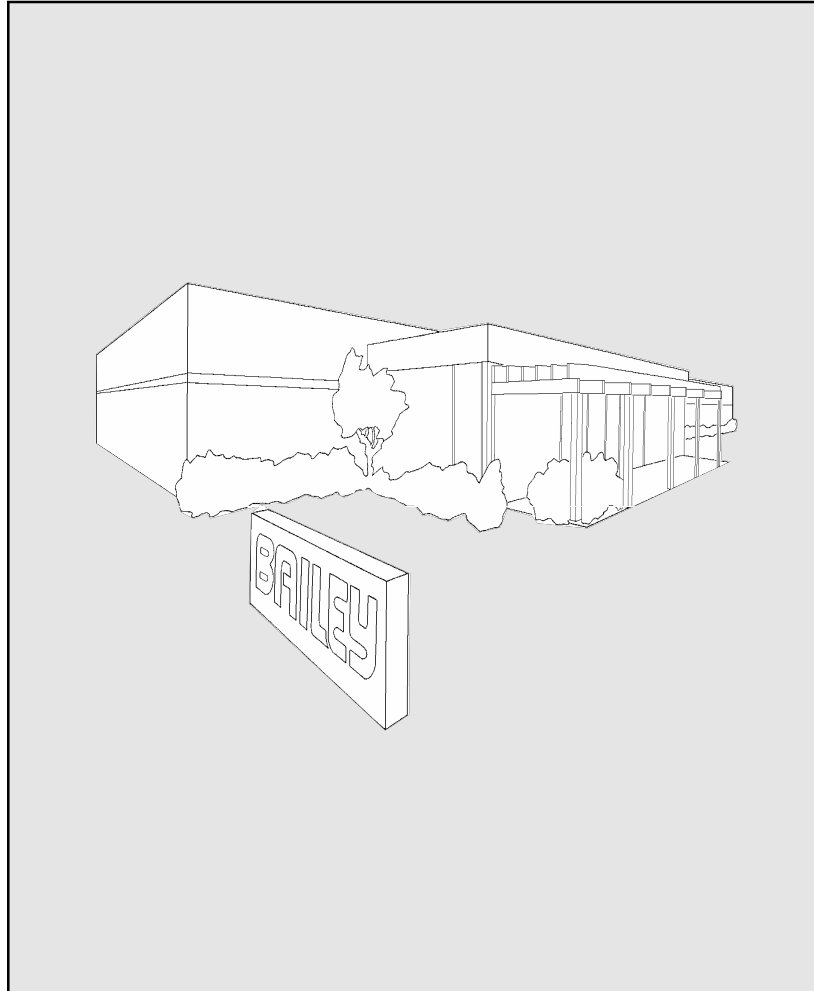
Merchandise to be returned **must** have proper authorization. Please contact your dealer for assistance with this procedure. A reference (return authorization or RA) number is to be clearly marked on all cartons and correspondence. Freight charges are to be prepaid, as collect shipments are not accepted. Items must be in the original packaging and returned within 30 days of the invoice date. Returns that are **not** the result of a warranty claim are subject to a restocking fee of 20% to cover inspection and handling. Any damage due to use, mishandling, or improper packing of the return will be noted and deducted from the credit issued. Special order items may not be returned for credit. Bailey Customer Service Representatives will complete a "Returned Merchandise Information" form to clearly identify all information concerning the returned merchandise.

Specifications:

Due to continuous improvements in design, materials, and construction techniques, specifications in the Bailey catalog are subject to change without notice. In all cases, the equipment shipped will be of equal or superior quality. Bailey Manufacturing Company also reserves the right to discontinue the manufacture of any product at such time as we consider necessary.

Customer Service:

When service is required, it is nearly impossible to place a value on it. For that reason we have an extremely competent Customer Service Department available to assist you with answers to your questions or recommendations in your planning process. In the unlikely event that a product may be in need of repair, our staff will assist with prompt identification of the required replacement part. Have the date of purchase and the name of your Bailey dealer handy for reference. Please contact us at 1-800-321-8372 between the hours of 8:30 AM and 4:30 PM Eastern Time weekdays for assistance.



BAILEY

BAILEY MANUFACTURING COMPANY
800-321-8372 • FAX: 800-224-5390
Mail: P.O. Box 130, Lodi, OH 44254-0130
Shipments: 118 Lee St., Lodi, OH 44254
www.baileymfg.com