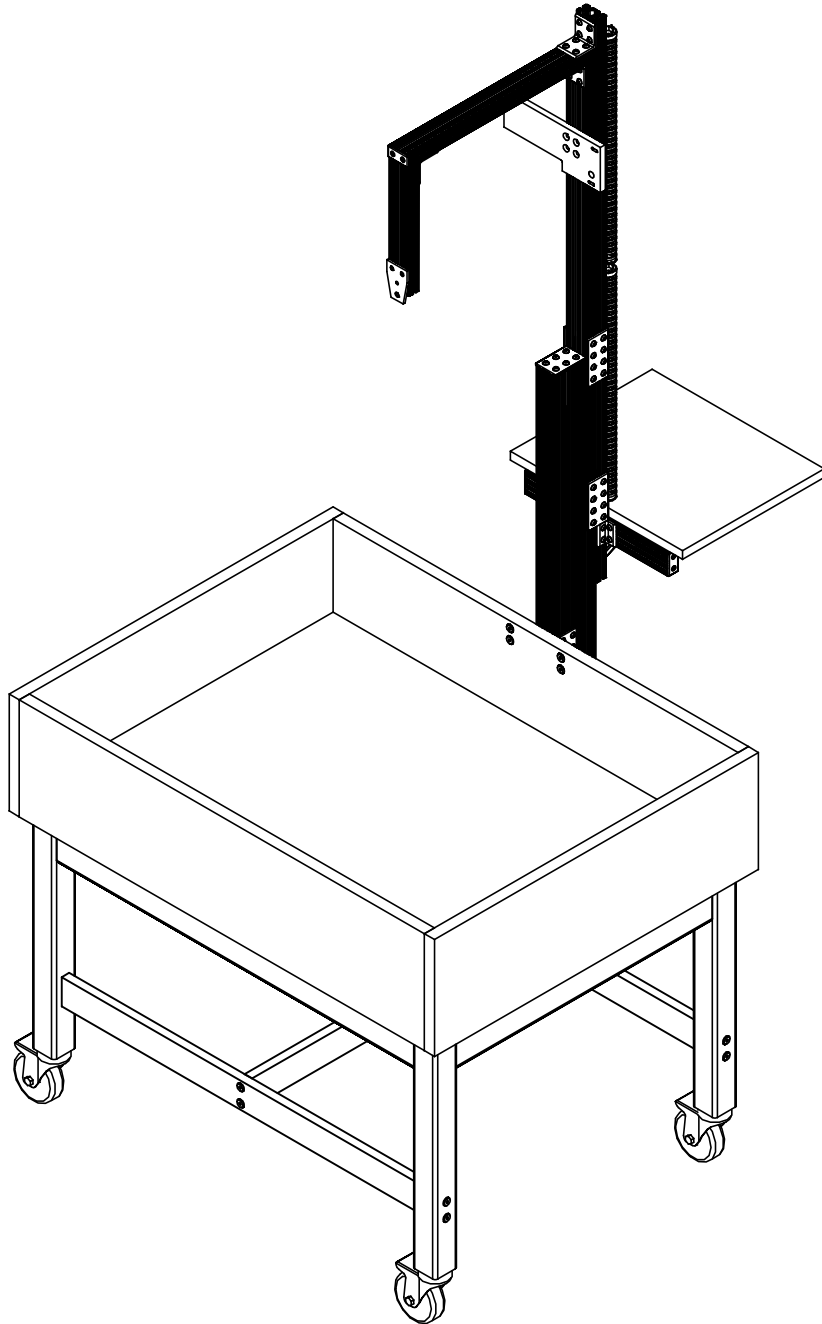


AUGMENTED REALITY SANDBOX

ARS-4030
ASSEMBLY INSTRUCTIONS



NOTE:

1. MODEL VIEWS MAY NOT REPRESENT EXACT MODEL PURCHASED

ALL DIMENSIONS ARE IN INCHES UNLESS NOTED OTHERWISE		DWN BY:	EMR	DATE DWN:	12/22/16
DECIMALS: X = ± .030		APR BY:		DATE APR:	
XX = ± .020		APR BY:		DATE APR:	
XXX = ± .010		APR BY:		DATE APR:	
ANGLES: ± 1°		APR BY:		DATE APR:	
CABINET SQUARENESS: ± .0625		APR BY:		DATE APR:	



CONFIDENTIAL:
ALL DESIGN RIGHTS RESERVED
THE INFORMATION, DATA, DESIGN, AND DRAWINGS EMBODIED IN THIS DOCUMENT AND ALL REPRODUCTIONS THEREOF ARE THE EXCLUSIVE PROPERTY OF DIVERSIFIED WOODCRAFTS, INC.

TITLE:
AUGMENTED REALITY SANDBOX
ASSEMBLY INSTRUCTIONS

THESE DOCUMENTS ARE SUPPLIED WITH THE UNDERSTANDING THAT THEY WILL NOT BE DISCLOSED TO THIRD PARTIES WITHOUT WRITTEN CONSENT OF DIVERSIFIED WOODCRAFTS, INC. ANY REPRODUCTION IN PART OR WHOLE WITHOUT WRITTEN CONSENT IS SUBJECT TO LEGAL ACTION.

REV.	CREATED DRAWING	X/X/X	XYZ	N/A
REV.	DESCRIPTION	DATE	NAME	ECN No.
REVISION LEVEL				

DRAWING NUMBER:	ARS-4030	SCALE:	NTS	SHEET:	1 OF 19	REVISION:	REV A
-----------------	----------	--------	-----	--------	---------	-----------	-------

PALLET CONTENTS

ITEMS INCLUDED	PART #	PART DESCRIPTION	QTY
SANDBOX ASSEMBLY	N/A	SANDBOX ASSEMBLY (FACTORY ASSEMBLED)	1
APRON ASSEMBLY	N/A	APRON ASSEMBLY (FACTORY ASSEMBLED)	1
ALUMINUM EXTRUSION KIT	252933	ARS-4030 HARDWARE KIT, PRICE ENGINEERING	1
STRETCHER	N/A	STRETCHER - 0.75"THK X 2.50"W X 26.88"L	1
BRACE	N/A	BRACE - 0.75"THK X 2.50"W X 35.38"L	2
LAPTOP SHELF	N/A	LAPTOP SHELF - 0.75"THK X 14.00"W X 17.00"L	1
LEGS - SEE NOTE 1	N/A	LEG,2.25X2.25X28.25	4
WASHERS - SEE NOTE 1	100039	WASHER,SPLIT LOCK 5/16	4
HEX NUTS - SEE NOTE 1	100044	NUT,HEX 5/16-18 STEEL ZINC	4
CASTERS - SEE NOTE 1	255721	CASTER,4",TOTAL LOCK STEM CASTER M12 - 1.75MM X 1.5"	4
CONFIRMATS - STRETCHER	228564	SCREW,7MMX50MM,CONN,ALLENHEAD,BLACK	4
CONFIRMATS - BRACE	227578	SCREW,7MMX90MM,CONN,ALLENHEAD,BLACK	8
LAPTOP	257897	LAPTOP,ACER NITRO 5,MODEL:AN515-55-53E5, NH.QB0AA.001-WINDOWS 10	1
CAMERA/SENSOR BAR	257910-U	KINECT V2 CAMERA-REFURBISHED MODELS	1
PROJECTOR	252555	BENQ 9H.JE177.13A MX631ST PROJECTOR	1
HARDWARE BOX	N/A	MISC ITEMS - SEE NEXT PAGE FOR CONTENTS	1

NOTE:

- LEGS, WASHERS, HEX NUTS & CASTERS ARE BOXED TOGETHER.

ALL DIMENSIONS ARE IN INCHES UNLESS NOTED OTHERWISE		DWN BY:	EMR	DATE DWN:	12/22/16
DECIMALS: X = ± .030 XX = ± .020		APR BY:		DATE APR:	
ANGLES: XXX = ± .010 = ± 1°		APR BY:		DATE APR:	
CABINET SQUARENESS: = ± .0625		APR BY:		DATE APR:	
<p>CONFIDENTIAL: ALL DESIGN RIGHTS RESERVED THE INFORMATION, DATA, DESIGN, AND DRAWINGS EMBODIED IN THIS DOCUMENT AND ALL REPRODUCTIONS THEREOF ARE THE EXCLUSIVE PROPERTY OF DIVERSIFIED WOODCRAFTS, INC.</p> <p>THESE DOCUMENTS ARE SUPPLIED WITH THE UNDERSTANDING THAT THEY WILL NOT BE DISCLOSED TO THIRD PARTIES WITHOUT WRITTEN CONSENT OF DIVERSIFIED WOODCRAFTS, INC. ANY REPRODUCTION IN PART OR WHOLE WITHOUT WRITTEN CONSENT IS SUBJECT TO LEGAL ACTION.</p>					



TITLE: AUGMENTED REALITY SANDBOX PALLET CONTENTS			
DRAWING NUMBER:	ARS-4030	SCALE:	NTS
SHEET:	2 OF 19	REVISION:	REV A

REV.	DESCRIPTION	DATE	NAME	ECN NO.
A	CREATED DRAWING	12/22/16	EMR	-

HARDWARE BOX PACKING LIST

ITEMS INCLUDED	PART #	PART DESCRIPTION	QTY	PACKED
PROJECTOR MOUNTING BLOCK	252793 OR 255571	PROJECTOR MOUNTING BLOCK - 0.50"THK X 3.875"W X 9.50"L	1	
MOUNTING BLOCK FOR 2"X4" ALUMINUM UPRIGHT	252983	MOUNT BLOCK,1.75" X 2.25" X 7.00"	1	
SCREWS - APRON ASSEMBLY TO SANDBOX ASSEMBLY	100641	SCREW,#8X1-3/4 QUAD RD WASH HD	14	
CONFIRMATS - MOUNTING CLEAT	252459	SCREW,1/4-20X60MM,CONN, ALLENHEAD,BLACK	4	
CONFIRMATS - SANDBOX	252460	SCREW,1/4-20X20MM,CON,ALLENHEAD,BLK	4	
JOINT CONNECTING NUT - MOUNTING CLEAT & SANDBOX	234337-JCN	JOINT CONNECTING NUT, 1/4-20X17MM	8	
CABLE ADAPTER	257960	HDE POWER SUPPLY AC CABLE ADAPTER FOR XBOX KINECT V2 MOTION SENSOR	1	
HDMI CABLE	252579	CABLE,HDMI, 6 FEET	1	
SCREWS FOR CAMERA MOUNT	252718	SCREW,#10-32X5/8" PHILLIPS FLAT HEAD MACHINE SCREW	2	
SCREWS FOR PROJECTOR BRACKET	252720	SCREW,1/4"-20X3/4" PHILLIPS FLAT HEAD MACHINE SCREW	4	
SCREWS FOR PROJECTOR	252719	SCREW,M4-0.7X20MM PHILLIPS PAN HEAD MACHINE SCREW	3	
DROP LEAF SUPPORT FOR LAPTOP SHELF	100028	SUPPORT,DROP LEAF 497840-1956	1	
SCREWS FOR DROP LEAF SUPPORT AND ALUMINUM HINGES	100111	SCREW,5/8 TRUSS HEAD	6	
SCREW FOR MOUNTING KINECT TO CAMERA MOUNTING PLATE	257893	SCREW,1/4-20 X .500",ZINC-PLATED STEEP PHILLIPS FLAT HEAD SCREWS	1	

TOOLS REQUIRED
1/2" WRENCH
1/2" SOCKET AND TORQUE WRENCH - OPTIONAL
4MM ALLEN WRENCH (FOR CONFIRMATS)
5MM ALLEN WRENCH (FOR JCN)
5/32" ALLEN WRENCH (FOR 1/4"-20x1/2" SCREWS)
1/8" ALLEN WRENCH (FOR #10-32x3/8" SCREWS)
PHILLIPS SCREWDRIVER

LAPTOP/PROJECTOR COMPONENTS
QTY (1) - KINECT V2 CAMERA (P# 257910-U)
QTY (1) - DIGITAL PROJECTOR (P# 252555)
QTY (1) - ACER LAPTOP (P# 257897)
QTY (1) - FLASH DRIVE W/ SET UP INSTRUCTIONS (P# 257896)

NOTE:

1.

ALL DIMENSIONS ARE IN INCHES UNLESS NOTED OTHERWISE
 DECIMALS: X = ± .030
 XX = ± .020
 XXX = ± .010
 ANGLES: ± 1°
 CABINET SQUARENESS: ± .0625

DWN BY: EMR DATE DWN: 12/22/16
 APR BY: DATE APR:
 APR BY: DATE APR:

CONFIDENTIAL:
 ALL DESIGN RIGHTS RESERVED
 THE INFORMATION, DATA, DESIGN, AND DRAWINGS EMBODIED IN THIS DOCUMENT AND ALL REPRODUCTIONS THEREOF ARE THE EXCLUSIVE PROPERTY OF DIVERSIFIED WOODCRAFTS, INC.

THESE DOCUMENTS ARE SUPPLIED WITH THE UNDERSTANDING THAT THEY WILL NOT BE DISCLOSED TO THIRD PARTIES WITHOUT WRITTEN CONSENT OF DIVERSIFIED WOODCRAFTS, INC. ANY REPRODUCTION IN PART OR WHOLE WITHOUT WRITTEN CONSENT IS SUBJECT TO LEGAL ACTION.

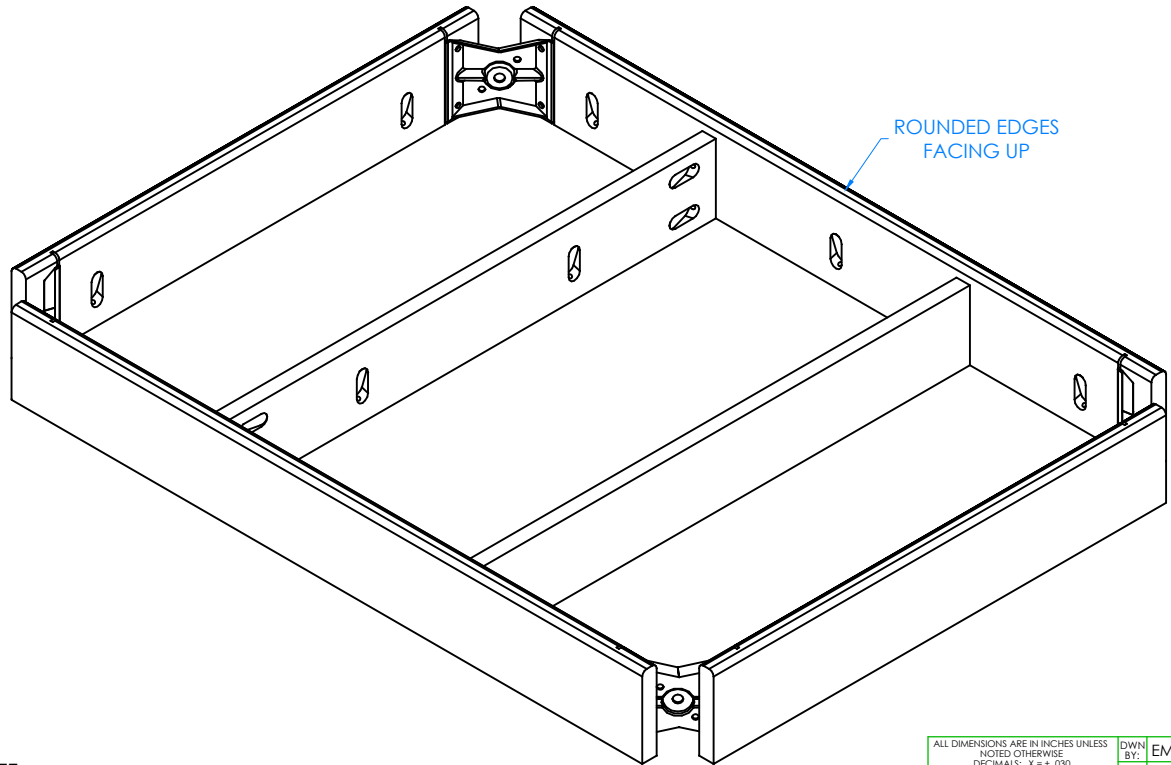


TITLE:
**AUGMENTED REALITY SANDBOX
 HARDWARE BOX PACKING LIST & TOOLS REQUIRED**

DRAWING NUMBER: ARS-4030	SCALE: NTS	SHEET: 3 OF 19	REVISION: REV A
------------------------------------	---------------	-------------------	--------------------

A	CREATED DRAWING	12/22/16	EMR	-
REV.	DESCRIPTION	DATE	NAME	ECN NO.

REVISION LEVEL



STEP 1:

- LAY APRON ASSEMBLY ON FLOOR WITH ROUNDED EDGES FACING UP.

NOTE:

1.

ALL DIMENSIONS ARE IN INCHES UNLESS NOTED OTHERWISE	DWN BY:	EMR	DATE DWN:	12/22/16
DECIMALS: X = ± .000	APR BY:		DATE APR:	
XX = ± .020	APR BY:		DATE APR:	
XXX = ± .010	APR BY:		DATE APR:	
ANGLES: = ± 1°	APR BY:		DATE APR:	
CABINET SQUARENESS: = ± .0625	APR BY:		DATE APR:	

CONFIDENTIAL:
 ALL DESIGN RIGHTS RESERVED
 THE INFORMATION, DATA, DESIGN, AND DRAWINGS EMBODIED IN THIS DOCUMENT AND ALL REPRODUCTIONS THEREOF ARE THE EXCLUSIVE PROPERTY OF DIVERSIFIED WOODCRAFTS, INC.

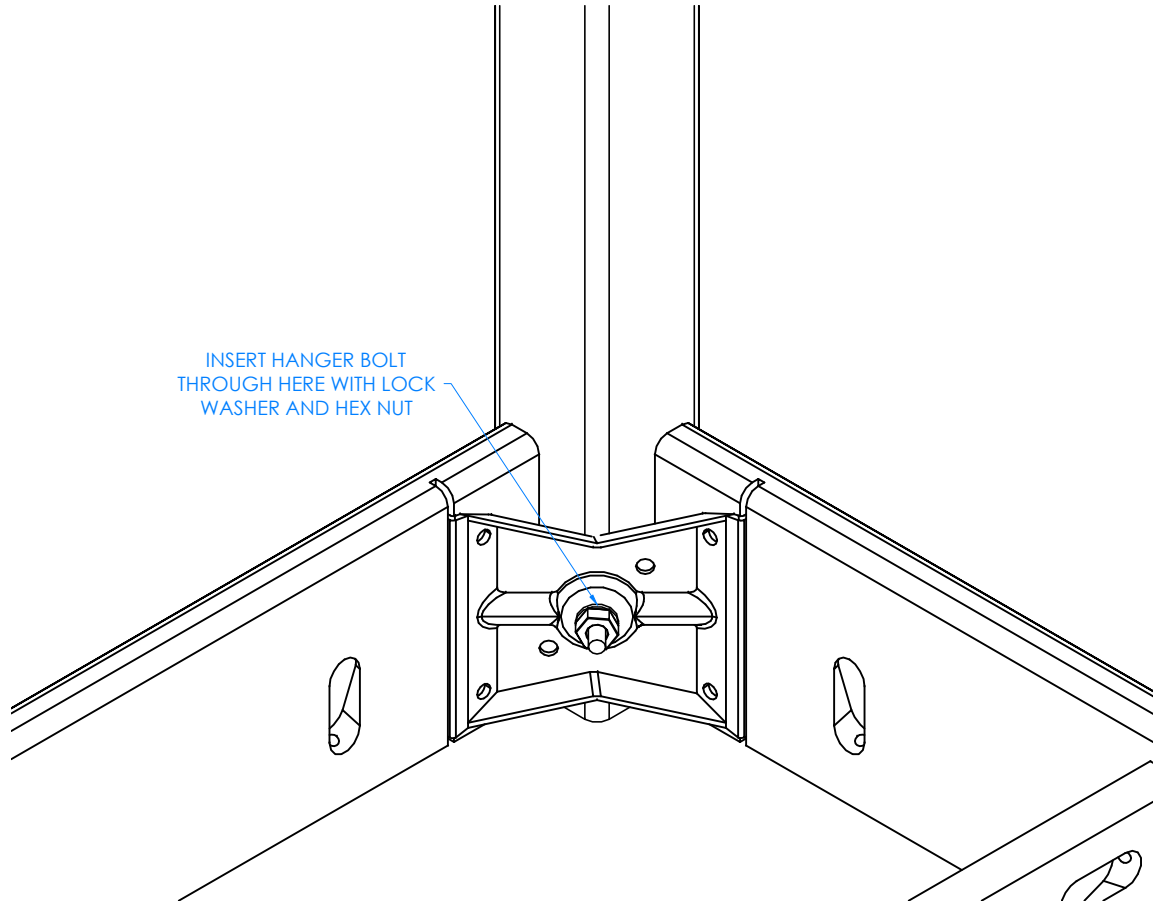
THESE DOCUMENTS ARE SUPPLIED WITH THE UNDERSTANDING THAT THEY WILL NOT BE DISCLOSED TO THIRD PARTIES WITHOUT WRITTEN CONSENT OF DIVERSIFIED WOODCRAFTS, INC. ANY REPRODUCTION IN PART OR WHOLE WITHOUT WRITTEN CONSENT IS SUBJECT TO LEGAL ACTION.



TITLE:
 AUGMENTED REALITY SANDBOX
 ASSEMBLY INSTRUCTIONS

REV.	DESCRIPTION	DATE	NAME	ECN NO.
A	CREATED DRAWING	12/22/16	EMR	-
REVISION LEVEL				

DRAWING NUMBER:	SCALE:	SHEET:	REVISION:
ARS-4030	NTS	4 OF 19	REV A



INSERT HANGER BOLT THROUGH HERE WITH LOCK WASHER AND HEX NUT

STEP 2:

- INSERT HANGER BOLT ON ONE LEG THROUGH THE CORNER BRACKET.
- MAKE SURE THRU HOLES ON LEGS RUN PARALLEL TO THE LONG APRONS (SEE STEP 3 FOR CLOSE UP).
- INSERT LOCK WASHER AND HEX NUT.
- SCREW ON NUT USING A 1/2" WRENCH OR 1/2" SOCKET AND TORQUE WRENCH.
- DO NOT TIGHTEN ALL THE WAY.
- REPEAT FOR OTHER LEGS.

CLOSE UP OF CORNER LEG ASSEMBLY

NOTE:

- 1.

ALL DIMENSIONS ARE IN INCHES UNLESS NOTED OTHERWISE	DWN BY:	EMR	DATE DWN:	12/22/16
DECIMALS: X = ± .030	APR BY:		DATE APR:	
XX = ± .020	APR BY:		DATE APR:	
XXX = ± .010	APR BY:		DATE APR:	
ANGLES: = ± 1°	APR BY:		DATE APR:	
CABINET SQUARENESS: = ± .0625	APR BY:		DATE APR:	

CONFIDENTIAL:
 ALL DESIGN RIGHTS RESERVED
 THE INFORMATION, DATA, DESIGN, AND DRAWINGS EMBODIED IN THIS DOCUMENT AND ALL REPRODUCTIONS THEREOF ARE THE EXCLUSIVE PROPERTY OF DIVERSIFIED WOODCRAFTS, INC.

THESE DOCUMENTS ARE SUPPLIED WITH THE UNDERSTANDING THAT THEY WILL NOT BE DISCLOSED TO THIRD PARTIES WITHOUT WRITTEN CONSENT OF DIVERSIFIED WOODCRAFTS, INC. ANY REPRODUCTION IN PART OR WHOLE WITHOUT WRITTEN CONSENT IS SUBJECT TO LEGAL ACTION.

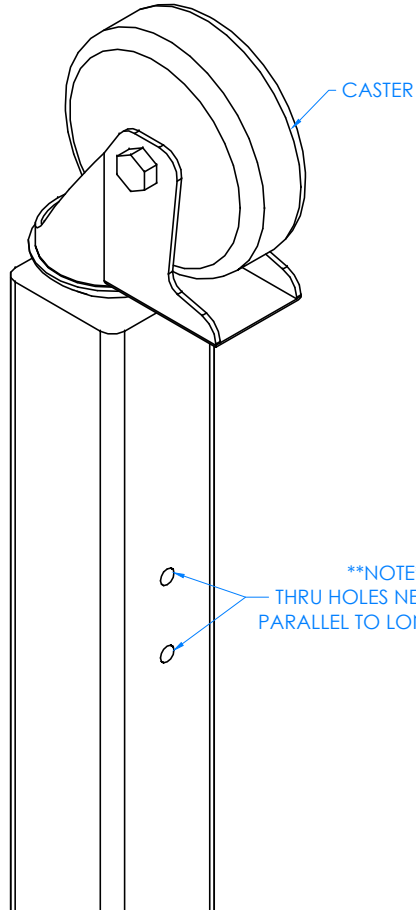


TITLE:
 AUGMENTED REALITY SANDBOX ASSEMBLY INSTRUCTIONS

REV.	DESCRIPTION	DATE	NAME	ECN NO.
A	CREATED DRAWING	12/22/16	EMR	-

REVISION LEVEL

DRAWING NUMBER:	SCALE:	SHEET:	REVISION:
ARS-4030	NTS	5 OF 19	REV A



STEP 3:

- ATTACH CASTERS TO BOTTOM OF LEGS.

CLOSE UP OF CASTER ASSEMBLY

NOTE:

- 1.

ALL DIMENSIONS ARE IN INCHES UNLESS NOTED OTHERWISE	DWN BY:	EMR	DATE DWN:	12/22/16
DECIMALS: $\times = \pm .000$	APR BY:		DATE APR:	
$_{XX} = \pm .020$	APR BY:		DATE APR:	
$_{XXX} = \pm .010$	APR BY:		DATE APR:	
ANGLES: $= \pm 1^{\circ}0'$	APR BY:		DATE APR:	
CABINET SQUARENESS: $= \pm .0625$	APR BY:		DATE APR:	



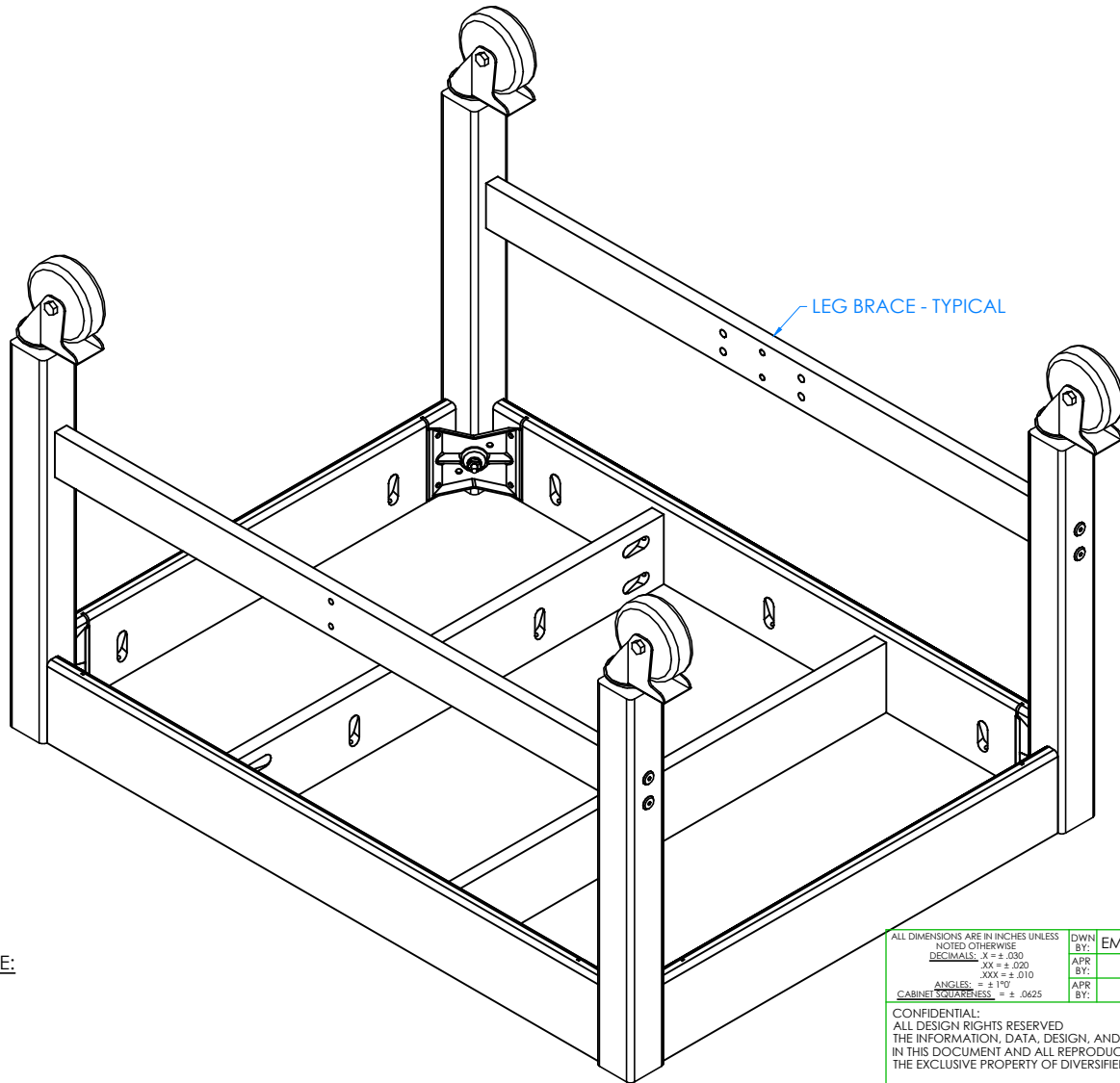
CONFIDENTIAL:
 ALL DESIGN RIGHTS RESERVED
 THE INFORMATION, DATA, DESIGN, AND DRAWINGS EMBODIED IN THIS DOCUMENT AND ALL REPRODUCTIONS THEREOF ARE THE EXCLUSIVE PROPERTY OF DIVERSIFIED WOODCRAFTS, INC.

TITLE:
 AUGMENTED REALITY SANDBOX
 ASSEMBLY INSTRUCTIONS

THESE DOCUMENTS ARE SUPPLIED WITH THE UNDERSTANDING THAT THEY WILL NOT BE DISCLOSED TO THIRD PARTIES WITHOUT WRITTEN CONSENT OF DIVERSIFIED WOODCRAFTS, INC. ANY REPRODUCTION IN PART OR WHOLE WITHOUT WRITTEN CONSENT IS SUBJECT TO LEGAL ACTION.

REV.	DESCRIPTION	DATE	NAME	ECN NO.
A	CREATED DRAWING	12/22/16	EMR	-
REVISION LEVEL				

DRAWING NUMBER:	SCALE:	SHEET:	REVISION:
ARS-4030	NTS	6 OF 19	REV A



STEP 4:

- ATTACH BRACES TO LEGS.
- INSERT THE CONFIRMATS INTO ONE LEG AND SCREW INTO BRACE.
- REPEAT ON OTHER LEGS.
- MAKE SURE BRACES ARE STRAIGHT AND ALL CONFIRMATS ARE TIGHT.

NOTE:

1.

ALL DIMENSIONS ARE IN INCHES UNLESS NOTED OTHERWISE	DWN BY:	EMR	DATE DWN:	12/22/16
DECIMALS: X = ± .000	APR BY:		DATE APR:	
XX = ± .020	APR BY:		DATE APR:	
XXX = ± .010	APR BY:		DATE APR:	
ANGLES: = ± 1°	APR BY:		DATE APR:	
CABINET SQUARENESS: = ± .0625	APR BY:		DATE APR:	

CONFIDENTIAL:
 ALL DESIGN RIGHTS RESERVED
 THE INFORMATION, DATA, DESIGN, AND DRAWINGS EMBODIED IN THIS DOCUMENT AND ALL REPRODUCTIONS THEREOF ARE THE EXCLUSIVE PROPERTY OF DIVERSIFIED WOODCRAFTS, INC.

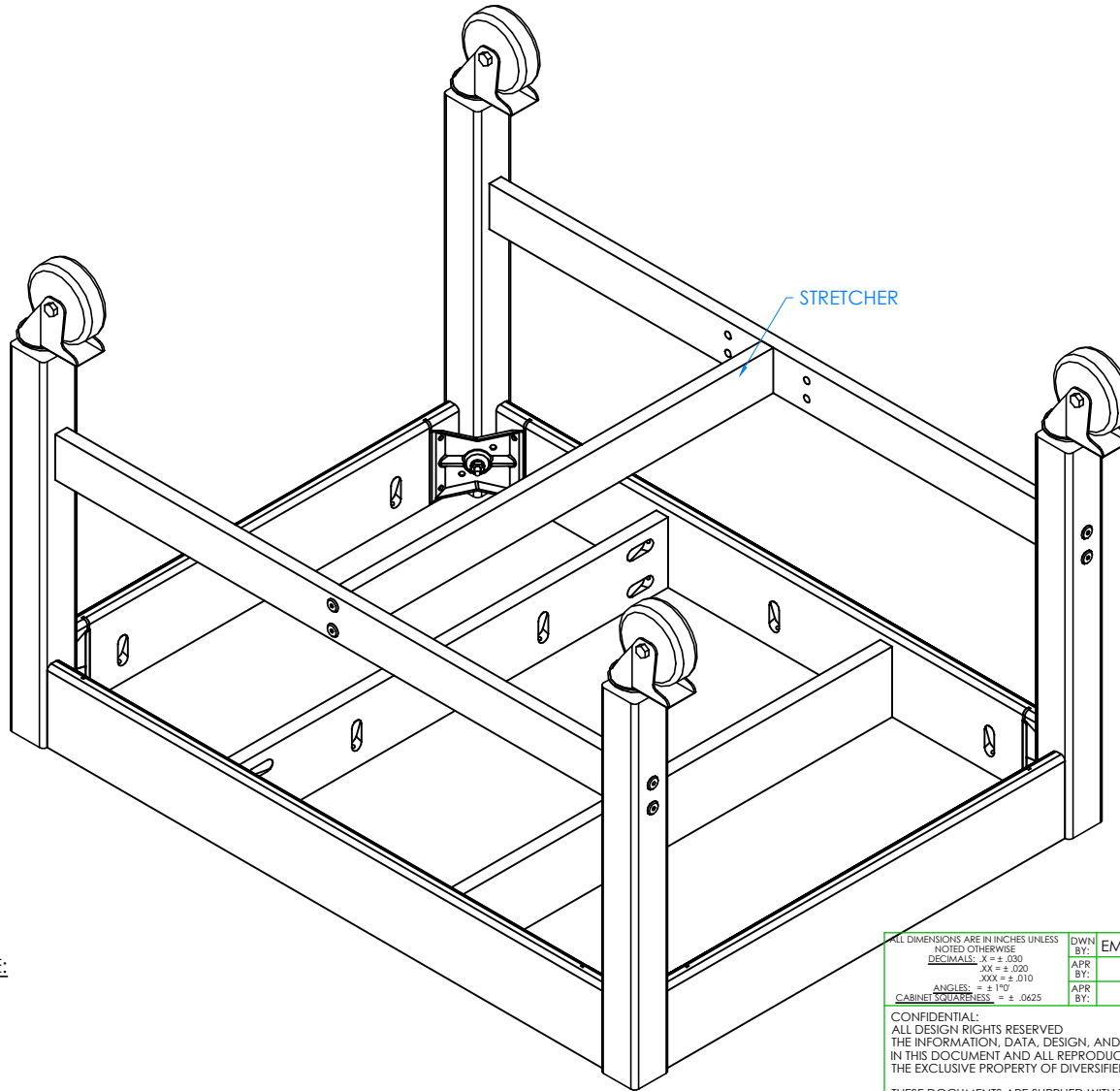
THESE DOCUMENTS ARE SUPPLIED WITH THE UNDERSTANDING THAT THEY WILL NOT BE DISCLOSED TO THIRD PARTIES WITHOUT WRITTEN CONSENT OF DIVERSIFIED WOODCRAFTS, INC. ANY REPRODUCTION IN PART OR WHOLE WITHOUT WRITTEN CONSENT IS SUBJECT TO LEGAL ACTION.



TITLE:
 AUGMENTED REALITY SANDBOX
 ASSEMBLY INSTRUCTIONS

REV.	DESCRIPTION	DATE	NAME	ECN NO.
A	CREATED DRAWING	12/22/16	EMR	-
REVISION LEVEL				

DRAWING NUMBER:	SCALE:	SHEET:	REVISION:
ARS-4030	NTS	7 OF 19	REV A



STEP 5:

- INSERT STRETCHER TO CENTER OF BRACES.
- ATTACH STRETCH WITH HARDWARE PROVIDED.
- GO BACK TO STEP 2 AND TIGHTEN UP THE HANGER BOLTS FOR EACH LEG USING A 1/2" WRENCH OR 1/2" SOCKET AND TORQUE WRENCH, TO A MINIMUM OF 12FT LBS BUT NOT TO EXCEED 17FT LBS.

NOTE:

1.

ALL DIMENSIONS ARE IN INCHES UNLESS NOTED OTHERWISE			
DECIMALS:	X = ± .000	DWN BY:	EMR
	XX = ± .020	DATE DWN:	12/22/16
	XXX = ± .010	APR BY:	
ANGLES:	= ± 1°	DATE APR:	
CABINET SQUARENESS:	= ± .0625	APR BY:	

CONFIDENTIAL:
 ALL DESIGN RIGHTS RESERVED
 THE INFORMATION, DATA, DESIGN, AND DRAWINGS EMBODIED IN THIS DOCUMENT AND ALL REPRODUCTIONS THEREOF ARE THE EXCLUSIVE PROPERTY OF DIVERSIFIED WOODCRAFTS, INC.

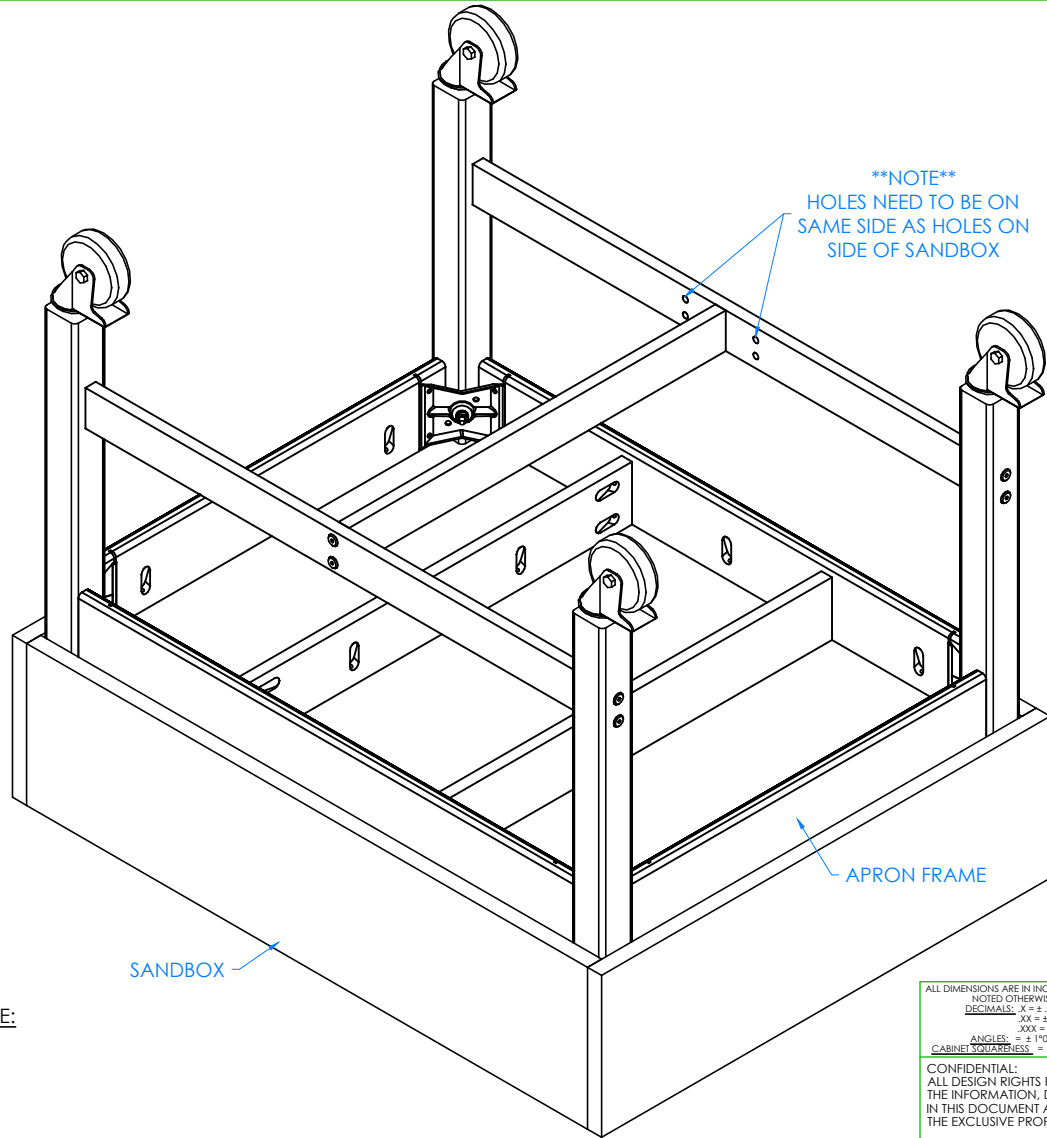
THESE DOCUMENTS ARE SUPPLIED WITH THE UNDERSTANDING THAT THEY WILL NOT BE DISCLOSED TO THIRD PARTIES WITHOUT WRITTEN CONSENT OF DIVERSIFIED WOODCRAFTS, INC. ANY REPRODUCTION IN PART OR WHOLE WITHOUT WRITTEN CONSENT IS SUBJECT TO LEGAL ACTION.



TITLE:
**AUGMENTED REALITY SANDBOX
 ASSEMBLY INSTRUCTIONS**

REV.	DESCRIPTION	DATE	NAME	ECN NO.
A	CREATED DRAWING	12/22/16	EMR	-
REVISION LEVEL				

DRAWING NUMBER:	SCALE:	SHEET:	REVISION:
ARS-4030	NTS	8 OF 19	REV A



STEP 6:

- SET APRON FRAME ON TOP OF SANDBOX AND ATTACH TO SANDBOX WITH THE 14 - #8X1-3/4 QUAD RD WASH HD SCREWS PROVIDED.
- MAKE SURE THE 4 HOLES ON BRACES ARE ON SAME SIDE AS THE 4 HOLES ON SANDBOX (SEE PHOTO IN STEP 6).

NOTE:

1.

ALL DIMENSIONS ARE IN INCHES UNLESS NOTED OTHERWISE DECIMALS: X = ± .000 XX = ± .020 XXX = ± .010 ANGLES: = ± 1° CABINET SQUARENESS: = ± .0625	DWN BY: EMR	DATE DWN: 12/22/16
	APR BY:	DATE APR:
	APR BY:	DATE APR:

CONFIDENTIAL:
ALL DESIGN RIGHTS RESERVED
THE INFORMATION, DATA, DESIGN, AND DRAWINGS EMBODIED IN THIS DOCUMENT AND ALL REPRODUCTIONS THEREOF ARE THE EXCLUSIVE PROPERTY OF DIVERSIFIED WOODCRAFTS, INC.

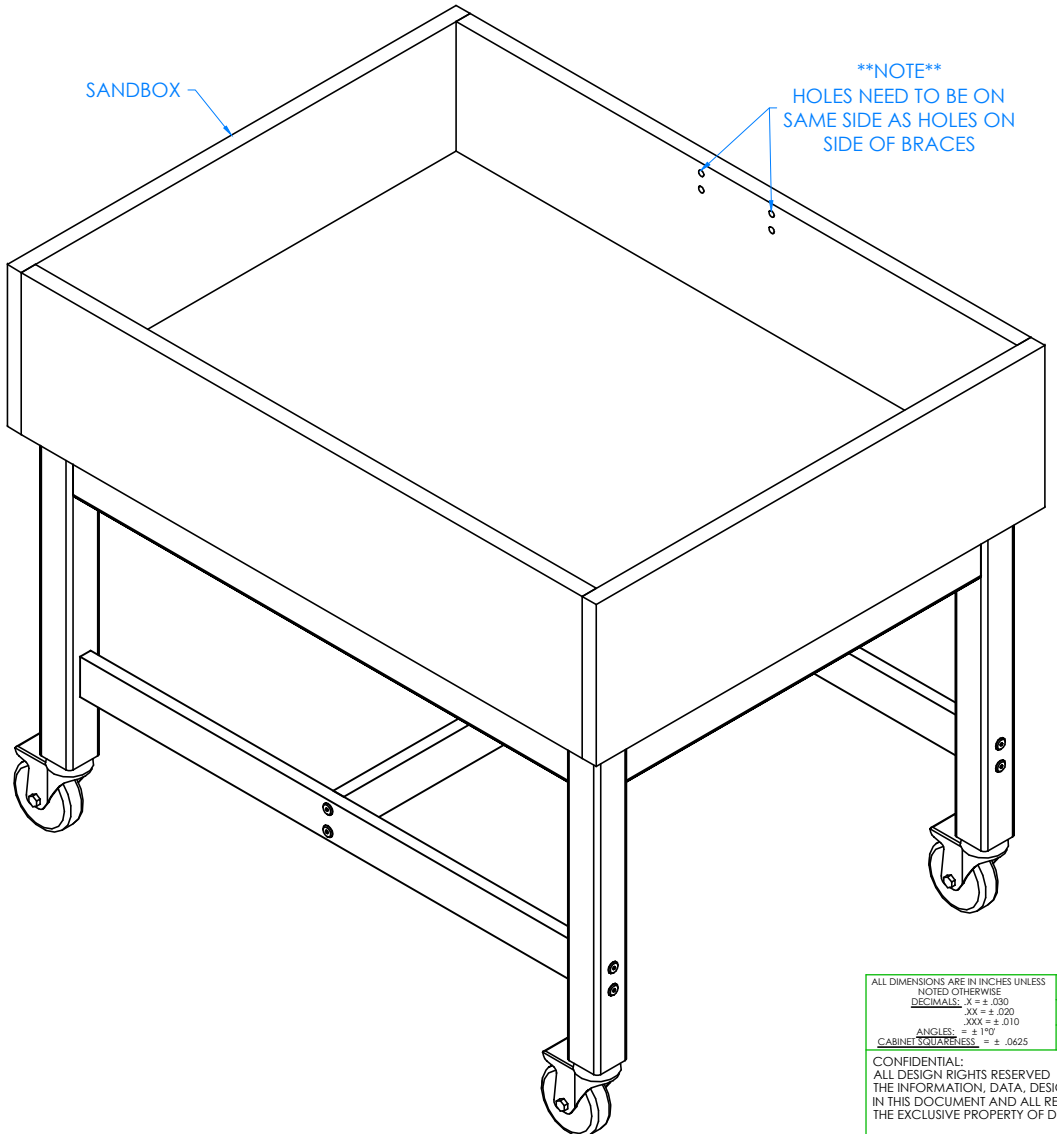
THESE DOCUMENTS ARE SUPPLIED WITH THE UNDERSTANDING THAT THEY WILL NOT BE DISCLOSED TO THIRD PARTIES WITHOUT WRITTEN CONSENT OF DIVERSIFIED WOODCRAFTS, INC. ANY REPRODUCTION IN PART OR WHOLE WITHOUT WRITTEN CONSENT IS SUBJECT TO LEGAL ACTION.



TITLE:
AUGMENTED REALITY SANDBOX
ASSEMBLY INSTRUCTIONS

REV.	DESCRIPTION	DATE	NAME	ECN NO.
A	CREATED DRAWING	12/22/16	EMR	-
REVISION LEVEL				

DRAWING NUMBER: ARS-4030	SCALE: NTS	SHEET: 9 OF 19	REVISION: REV A
------------------------------------	---------------	-------------------	--------------------



****NOTE****
HOLES NEED TO BE ON
SAME SIDE AS HOLES ON
SIDE OF BRACES

STEP 7:

- WITH HELP FROM ANOTHER PERSON, TURN UNIT OVER SO SANDBOX IS FACING UP.

NOTE:
1.

ALL DIMENSIONS ARE IN INCHES UNLESS NOTED OTHERWISE		DWN BY:	EMR	DATE DWN:	12/22/16
DECIMALS: $\times = \pm .000$		APR BY:		DATE APR:	
$\times\times = \pm .020$		APR BY:		DATE APR:	
$\times\times\times = \pm .010$		APR BY:		DATE APR:	
ANGLES: $= \pm 1^{\circ}$		APR BY:		DATE APR:	
CABINET SQUARENESS: $= \pm .0625$		APR BY:		DATE APR:	



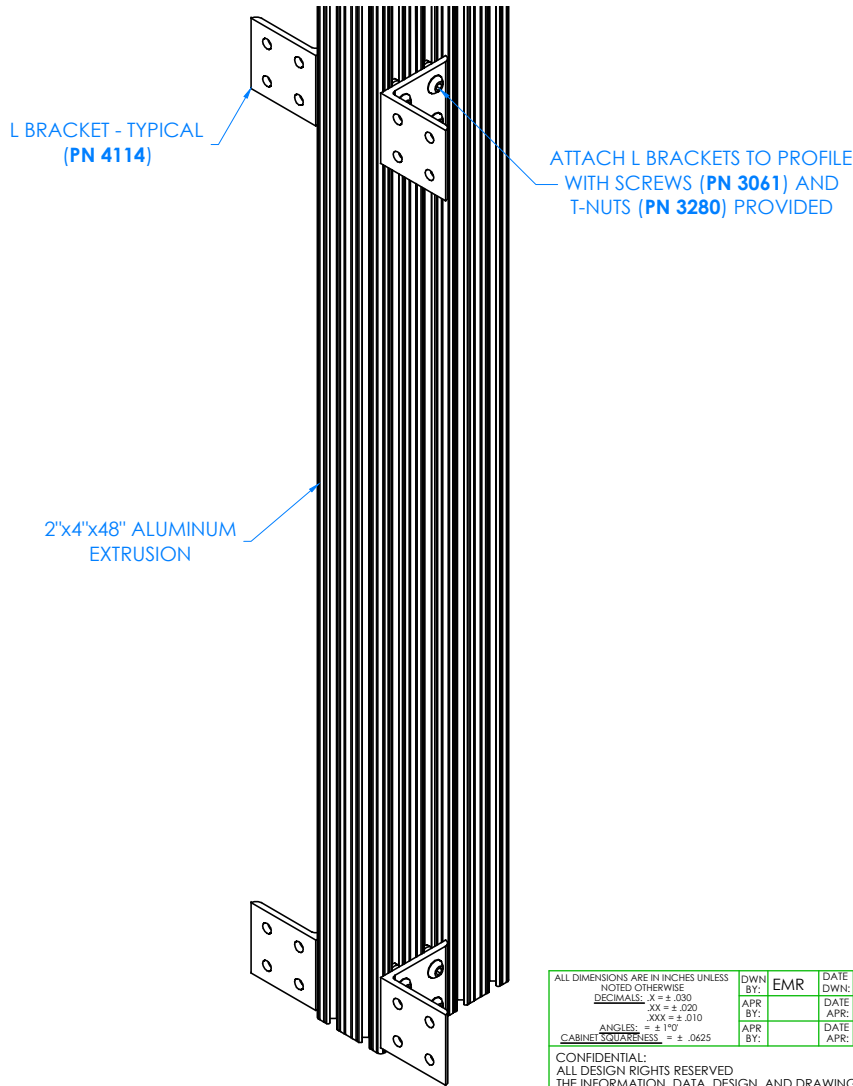
CONFIDENTIAL:
ALL DESIGN RIGHTS RESERVED
THE INFORMATION, DATA, DESIGN, AND DRAWINGS EMBODIED IN THIS DOCUMENT AND ALL REPRODUCTIONS THEREOF ARE THE EXCLUSIVE PROPERTY OF DIVERSIFIED WOODCRAFTS, INC.

TITLE:
AUGMENTED REALITY SANDBOX
ASSEMBLY INSTRUCTIONS

THESE DOCUMENTS ARE SUPPLIED WITH THE UNDERSTANDING THAT THEY WILL NOT BE DISCLOSED TO THIRD PARTIES WITHOUT WRITTEN CONSENT OF DIVERSIFIED WOODCRAFTS, INC. ANY REPRODUCTION IN PART OR WHOLE WITHOUT WRITTEN CONSENT IS SUBJECT TO LEGAL ACTION.

REV.	DESCRIPTION	DATE	NAME	ECN NO.
A	CREATED DRAWING	12/22/16	EMR	-
REVISION LEVEL				

DRAWING NUMBER:	ARS-4030	SCALE:	NTS	SHEET:	10 OF 19	REVISION:	REV A
-----------------	----------	--------	-----	--------	----------	-----------	-------



CLOSE UP OF ALUMINUM EXTRUSION WITH L BRACKETS ATTACHED

STEP 8:

- SLIDE (2) L-BRACKETS ASSEMBLIES ONTO EACH SIDE OF THE 2"x4"x48" EXTRUSION.
- TOP BRACKETS CAN BE LEFT LOOSE FOR NOW.
- POSITION BOTTOM BRACKETS SO THEY ARE FLUSH WITH BOTTOM OF ALUMINUM EXTRUSION
- TIGHTEN BRACKETS TO EXTRUSION.

NOTE:

1.

ALL DIMENSIONS ARE IN INCHES UNLESS NOTED OTHERWISE	DWN BY:	EMR	DATE DWN:	12/22/16
DECIMALS: $X = \pm .000$	APR BY:		DATE APR:	
$XX = \pm .020$	APR BY:		DATE APR:	
$XXX = \pm .010$	APR BY:		DATE APR:	
ANGLES: $= \pm 1^{\circ}0'$	APR BY:		DATE APR:	
CABINET SQUARENESS: $= \pm .0625$	APR BY:		DATE APR:	

CONFIDENTIAL:
ALL DESIGN RIGHTS RESERVED
THE INFORMATION, DATA, DESIGN, AND DRAWINGS EMBODIED IN THIS DOCUMENT AND ALL REPRODUCTIONS THEREOF ARE THE EXCLUSIVE PROPERTY OF DIVERSIFIED WOODCRAFTS, INC.

THESE DOCUMENTS ARE SUPPLIED WITH THE UNDERSTANDING THAT THEY WILL NOT BE DISCLOSED TO THIRD PARTIES WITHOUT WRITTEN CONSENT OF DIVERSIFIED WOODCRAFTS, INC. ANY REPRODUCTION IN PART OR WHOLE WITHOUT WRITTEN CONSENT IS SUBJECT TO LEGAL ACTION.



TITLE:
AUGMENTED REALITY SANDBOX
ASSEMBLY INSTRUCTIONS

REV.	DESCRIPTION	DATE	NAME	ECN NO.
A	CREATED DRAWING	12/22/16	EMR	-

REVISION LEVEL

DRAWING NUMBER:

ARS-4030

SCALE:

NTS

SHEET:

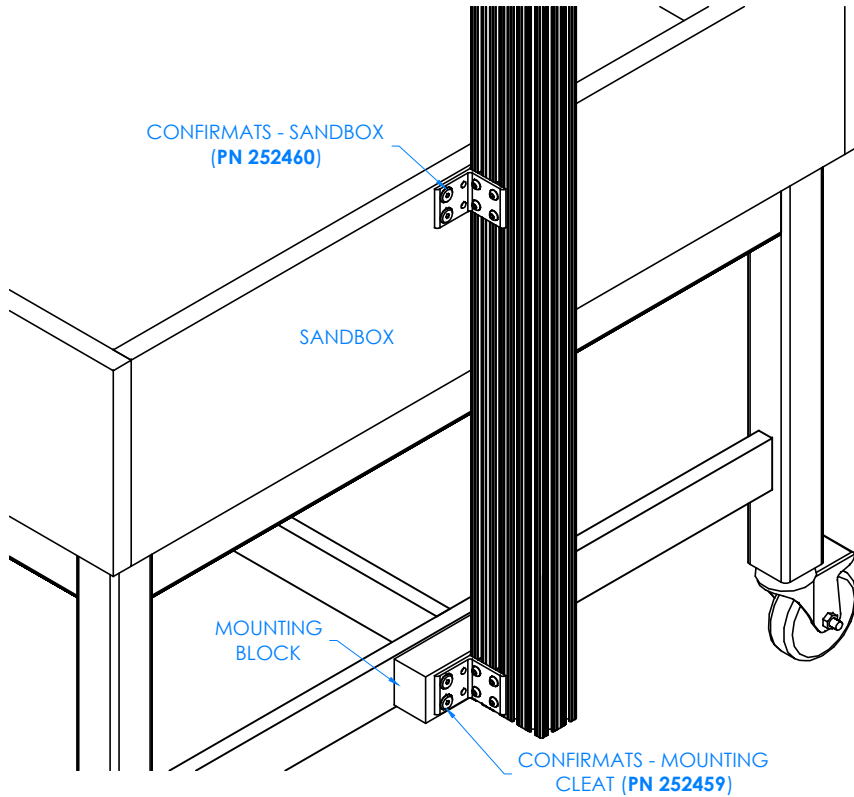
11 OF 19

REVISION:

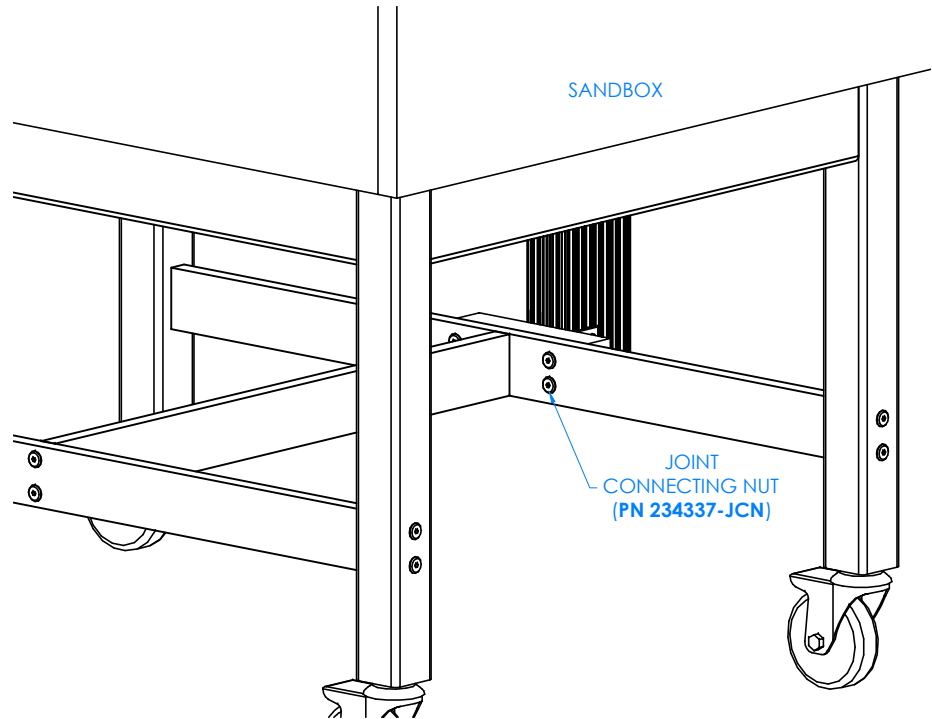
REV A

STEP 9:

- ATTACH ALUMINUM EXTRUSION ASSEMBLY 1 TO SANDBOX AND MOUNTING BLOCK.
- POSITION L-BRACKETS TO HOLES ON TOP OF SANDBOX AND TO HOLES ON MOUNTING BLOCK.
- ATTACH L-BRACKETS BY INSERTING CONFIRMATS ON OUTSIDE OF SANDBOX AND MOUNTING BLOCK AND THE JOINT CONNECTING NUT ON INSIDE.
- TIGHTEN CONFIRMATS AND THEN TIGHTEN TOP L-BRACKET SCREWS.



OUTSIDE OF SANDBOX ASSEMBLY SHOWN



INSIDE OF SANDBOX ASSEMBLY SHOWN

ALL DIMENSIONS ARE IN INCHES UNLESS NOTED OTHERWISE		DWN BY:	EMR	DATE DWN:	12/22/16
DECIMALS: X = ± .030		APR BY:		DATE APR:	
XX = ± .020		APR BY:		DATE APR:	
XXX = ± .010		APR BY:		DATE APR:	
ANGLES: = ± 1°		APR BY:		DATE APR:	
CABINET SQUARENESS: = ± .0625		APR BY:		DATE APR:	

CONFIDENTIAL:
 ALL DESIGN RIGHTS RESERVED
 THE INFORMATION, DATA, DESIGN, AND DRAWINGS EMBODIED IN THIS DOCUMENT AND ALL REPRODUCTIONS THEREOF ARE THE EXCLUSIVE PROPERTY OF DIVERSIFIED WOODCRAFTS, INC.

THESE DOCUMENTS ARE SUPPLIED WITH THE UNDERSTANDING THAT THEY WILL NOT BE DISCLOSED TO THIRD PARTIES WITHOUT WRITTEN CONSENT OF DIVERSIFIED WOODCRAFTS, INC. ANY REPRODUCTION IN PART OR WHOLE WITHOUT WRITTEN CONSENT IS SUBJECT TO LEGAL ACTION.

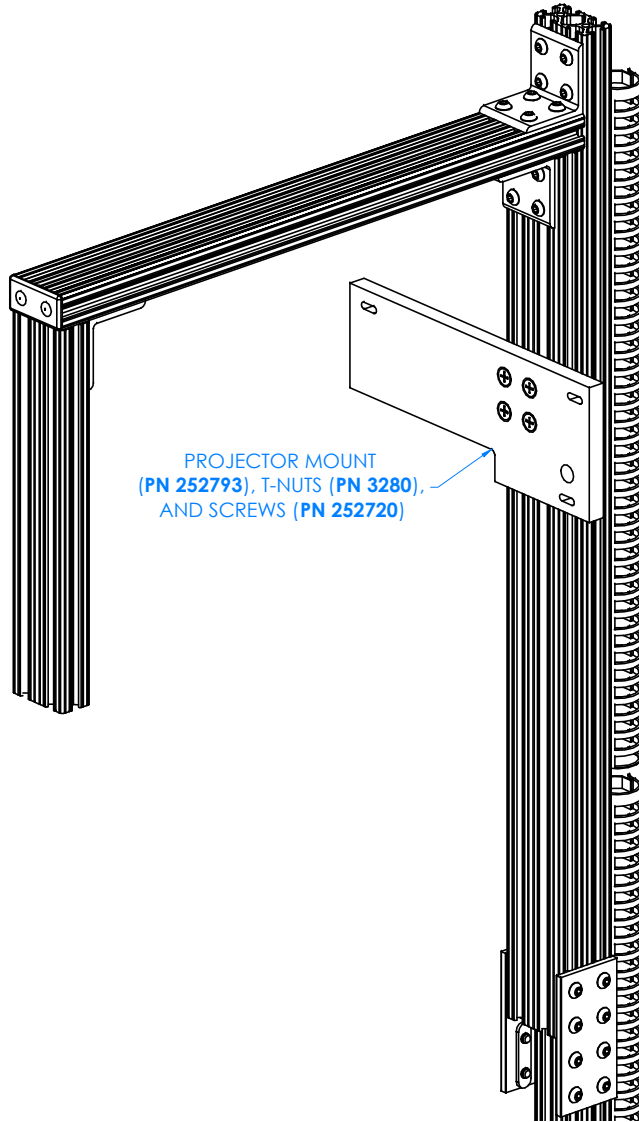


TITLE:
 AUGMENTED REALITY SANDBOX ASSEMBLY INSTRUCTIONS

REV.	DESCRIPTION	DATE	NAME	ECN NO.
A	CREATED DRAWING	12/22/16	EMR	-

REVISION LEVEL

DRAWING NUMBER:	ARS-4030	SCALE:	NTS	SHEET:	12 OF 19	REVISION:	REV A
-----------------	----------	--------	-----	--------	----------	-----------	-------



STEP 10:

- SLIDE PROJECTOR MOUNTING BLOCK ONTO ALUMINUM EXTRUSION ASSEMBLY (BUILT IN THE PREVIOUS SET OF INSTRUCTIONS) FROM BOTTOM.
- ATTACH WITH HARDWARE PROVIDED.
- DO NOT TIGHTEN ALL THE WAY.

NOTE:

1.

ALL DIMENSIONS ARE IN INCHES UNLESS NOTED OTHERWISE	DWN BY:	EMR	DATE DWN:	12/22/16
DECIMALS: $X = \pm .000$	APR BY:		DATE APR:	
$XX = \pm .020$	APR BY:		DATE APR:	
$XXX = \pm .010$	APR BY:		DATE APR:	
ANGLES: $= \pm 1^{\circ}0'$	APR BY:		DATE APR:	
CABINET SQUARENESS: $= \pm .0625$	APR BY:		DATE APR:	

CONFIDENTIAL:
 ALL DESIGN RIGHTS RESERVED
 THE INFORMATION, DATA, DESIGN, AND DRAWINGS EMBODIED IN THIS DOCUMENT AND ALL REPRODUCTIONS THEREOF ARE THE EXCLUSIVE PROPERTY OF DIVERSIFIED WOODCRAFTS, INC.

THESE DOCUMENTS ARE SUPPLIED WITH THE UNDERSTANDING THAT THEY WILL NOT BE DISCLOSED TO THIRD PARTIES WITHOUT WRITTEN CONSENT OF DIVERSIFIED WOODCRAFTS, INC. ANY REPRODUCTION IN PART OR WHOLE WITHOUT WRITTEN CONSENT IS SUBJECT TO LEGAL ACTION.

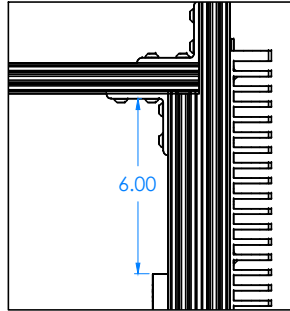
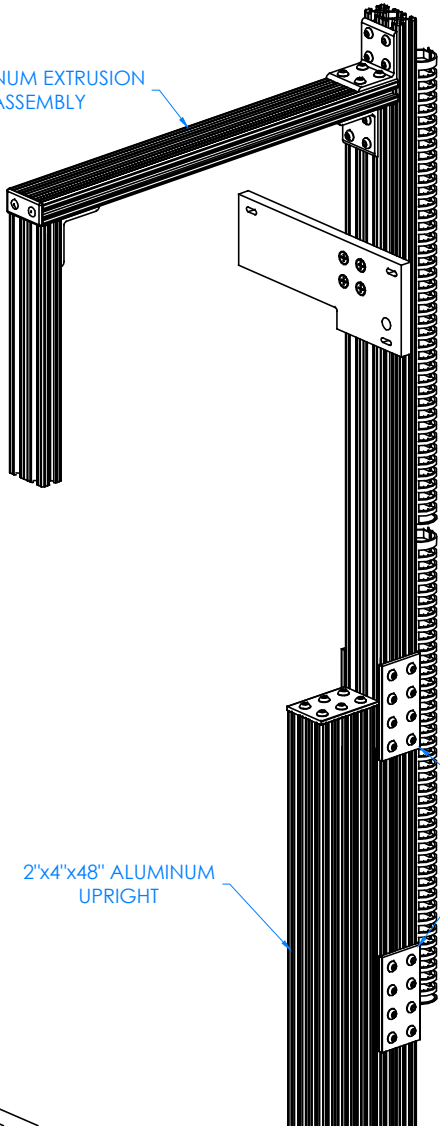


TITLE:
 AUGMENTED REALITY SANDBOX
 ASSEMBLY INSTRUCTIONS

REV.	DESCRIPTION	DATE	NAME	ECN NO.
A	CREATED DRAWING	12/22/16	EMR	-
REVISION LEVEL				

DRAWING NUMBER:	SCALE:	SHEET:	REVISION:
ARS-4030	NTS	13 OF 19	REV A

ALUMINUM EXTRUSION ASSEMBLY



STEP 11:

- SLIDE ALUMINUM EXTRUSION ASSEMBLY ONTO THE 2"x4"x48" ALUMINUM UPRIGHT .
- TIGHTEN ASSEMBLIES TOGETHER.
- MAKE SURE ALL SCREWS ARE TIGHT BEFORE MOVING ON.
- GO BACK TO STEP 10 AND TIGHTEN PROJECTOR MOUNTING BLOCK ONTO ALUMINUM EXTRUSION ASSEMBLY 2.
- MAKE SURE TOP OF MOUNT SITS 6" FROM THE BOTTOM OF CORNER L-BRACKET.
- FINAL DIMENSION WILL BE ADJUSTED ONCE CAMERA AND PROJECTOR ARE MOUNTED IN STEP 14.

TIGHTEN ASSEMBLIES HERE (BOTH SIDES)

2"x4"x48" ALUMINUM UPRIGHT

ALL DIMENSIONS ARE IN INCHES UNLESS NOTED OTHERWISE	DWN BY:	EMR	DATE DWN:	12/22/16
DECIMALS: X = ± .000	APR BY:		DATE APR:	
XX = ± .020	APR BY:		DATE APR:	
XXX = ± .010	APR BY:		DATE APR:	
ANGLES: = ± 1°0'	APR BY:		DATE APR:	
CABINET SQUARENESS: = ± .0625	APR BY:		DATE APR:	

CONFIDENTIAL:
ALL DESIGN RIGHTS RESERVED
THE INFORMATION, DATA, DESIGN, AND DRAWINGS EMBODIED IN THIS DOCUMENT AND ALL REPRODUCTIONS THEREOF ARE THE EXCLUSIVE PROPERTY OF DIVERSIFIED WOODCRAFTS, INC.

THESE DOCUMENTS ARE SUPPLIED WITH THE UNDERSTANDING THAT THEY WILL NOT BE DISCLOSED TO THIRD PARTIES WITHOUT WRITTEN CONSENT OF DIVERSIFIED WOODCRAFTS, INC. ANY REPRODUCTION IN PART OR WHOLE WITHOUT WRITTEN CONSENT IS SUBJECT TO LEGAL ACTION.



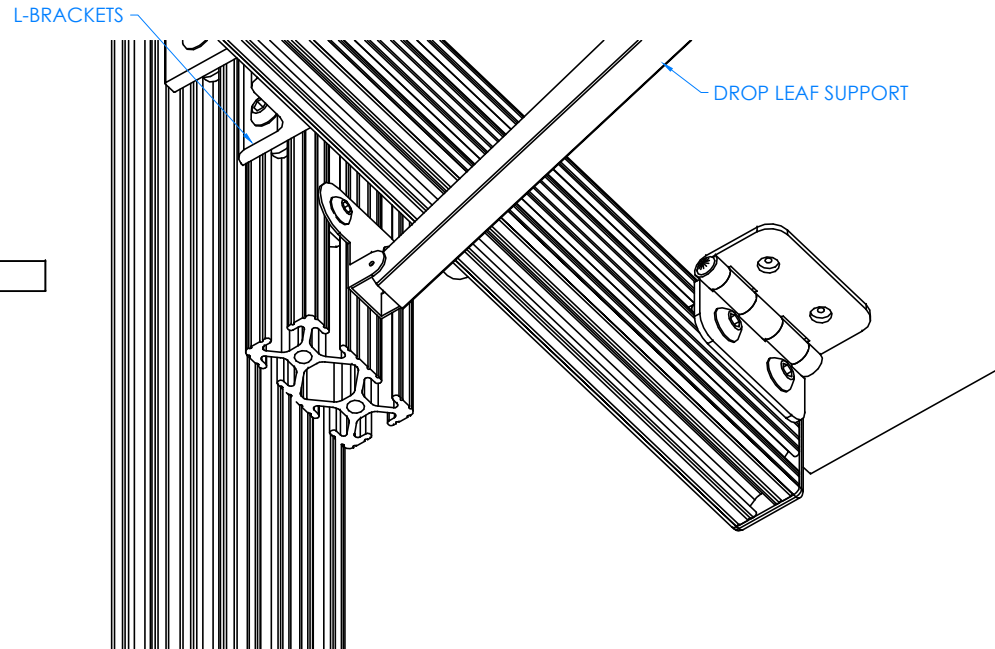
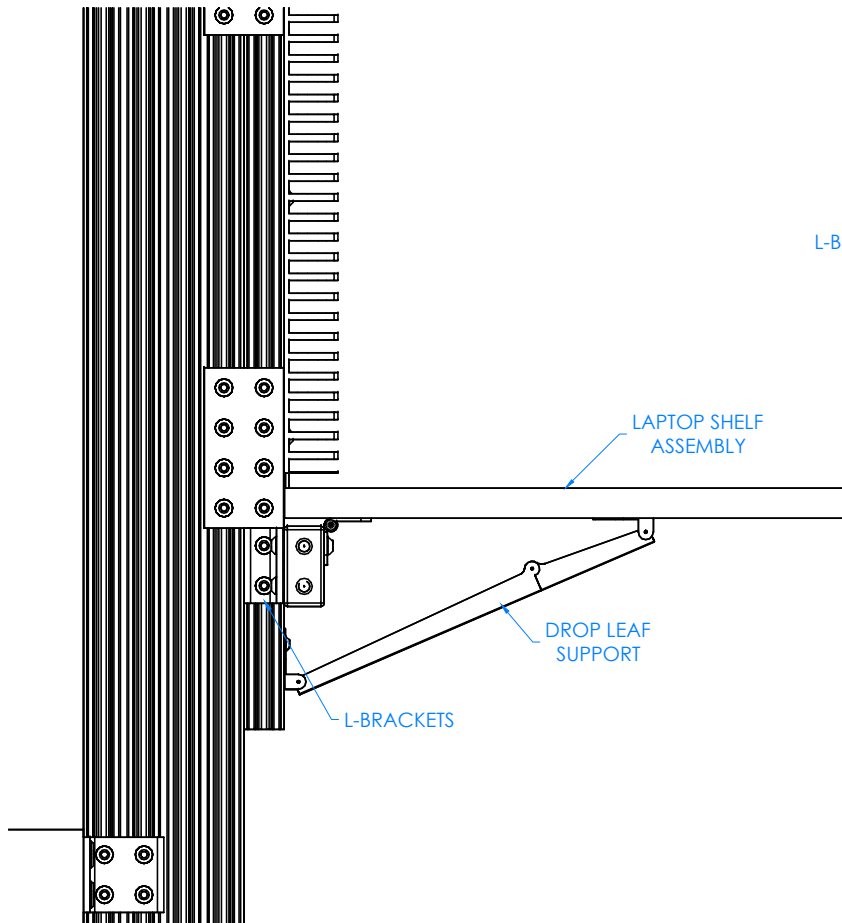
TITLE: AUGMENTED REALITY SANDBOX ASSEMBLY INSTRUCTIONS

REV.	DESCRIPTION	DATE	NAME	ECN NO.
A	CREATED DRAWING	12/22/16	EMR	-
REVISION LEVEL				

DRAWING NUMBER:	ARS-4030	SCALE:	NTS	SHEET:	14 OF 19	REVISION:	REV A
-----------------	----------	--------	-----	--------	----------	-----------	-------

STEP 12:

- SLIDE LAPTOP SHELF L-BRACKETS UP THE SIDES OF THE T-SLOTTED PROFILE UNTIL THEY ARE TIGHT TO THE 8-HOLE FLAT PLATE.
- TIGHTEN SCREWS.
- SLIDE BOTTOM END OF THE DROP LEAF SUPPORT UP THE FACE OF THE T-SLOTTED PROFILE, GUIDING ATTACHED T-NUTS INTO GROOVES.
- FULLY ENGAGE DROP LEAF AND RAISE IT UP UNTIL SHELF IS SITTING PARALLEL TO FLOOR.
- TIGHTEN SCREWS TO SECURE IT IN PLACE.



UNDERSIDE OF DROP LEAF SHOWN

NOTE:

1.

ALL DIMENSIONS ARE IN INCHES UNLESS NOTED OTHERWISE	DWN BY:	EMR	DATE DWN:	12/22/16
DECIMALS: X = ± .030	APR BY:		DATE APR:	
XX = ± .020	APR BY:		DATE APR:	
XXX = ± .010	APR BY:		DATE APR:	
ANGLES: = ± 1°0'	APR BY:		DATE APR:	
CABINET SQUARENESS: = ± .0625	APR BY:		DATE APR:	

CONFIDENTIAL:
ALL DESIGN RIGHTS RESERVED
THE INFORMATION, DATA, DESIGN, AND DRAWINGS EMBODIED IN THIS DOCUMENT AND ALL REPRODUCTIONS THEREOF ARE THE EXCLUSIVE PROPERTY OF DIVERSIFIED WOODCRAFTS, INC.

THESE DOCUMENTS ARE SUPPLIED WITH THE UNDERSTANDING THAT THEY WILL NOT BE DISCLOSED TO THIRD PARTIES WITHOUT WRITTEN CONSENT OF DIVERSIFIED WOODCRAFTS, INC. ANY REPRODUCTION IN PART OR WHOLE WITHOUT WRITTEN CONSENT IS SUBJECT TO LEGAL ACTION.



TITLE:
AUGMENTED REALITY SANDBOX
ASSEMBLY INSTRUCTIONS

REV.	DESCRIPTION	DATE	NAME	ECN NO.
A	CREATED DRAWING	12/22/16	EMR	-

REVISION LEVEL

DRAWING NUMBER:

ARS-4030

SCALE:

NTS

SHEET:

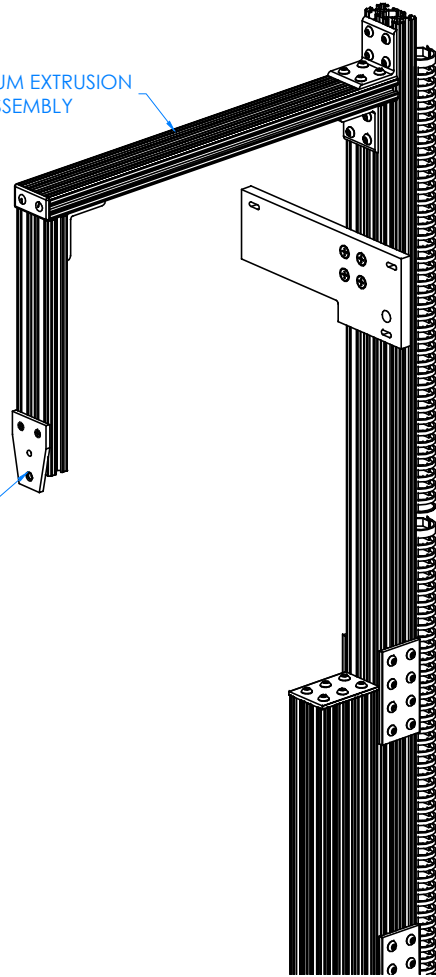
15 OF 19

REVISION:

REV A

ALUMINUM EXTRUSION ASSEMBLY

CAMERA MOUNT PLATE (PN 4141), MOUNTING SCREWS FOR EXTRUSION (PN 3321), KINECT MOUNTING SCREW (PN *257893* SEE NOTE 2)



STEP 13:

- SLIDE CAMERA MOUNT UP ONTO ALUMINUM EXTRUSION ASSEMBLY, GUIDING THE T-NUTS INTO THE SLOTS.
- SLIDE IT UP UNTIL BOTTOM LIP OF MOUNT IS AGAINST THE ALUMINUM.
- TIGHTEN SCREWS.

NOTE:

1. ELECTRONIC COMPONENTS NOT SHOWN.
2. T-NUTS COME AS AN ASSEMBLY WITH SCREWS ALREADY ATTACHED, THEY ARE NOT NEEDED AND CAN BE DISCARDED. USE SCREWS LISTED WITH THIS STEP.

REV.	DESCRIPTION	DATE	NAME	ECN NO.
A	CREATED DRAWING	12/22/16	EMR	-
REVISION LEVEL				

ALL DIMENSIONS ARE IN INCHES UNLESS NOTED OTHERWISE	DWN BY:	EMR	DATE DWN:	12/22/16
DECIMALS: $X = \pm .000$	APR BY:		DATE APR:	
$XX = \pm .020$	APR BY:		DATE APR:	
$XXX = \pm .010$	APR BY:		DATE APR:	
ANGLES: $= \pm 1^{\circ}0'$	APR BY:		DATE APR:	
CABINET SQUARENESS: $= \pm .0625$	APR BY:		DATE APR:	

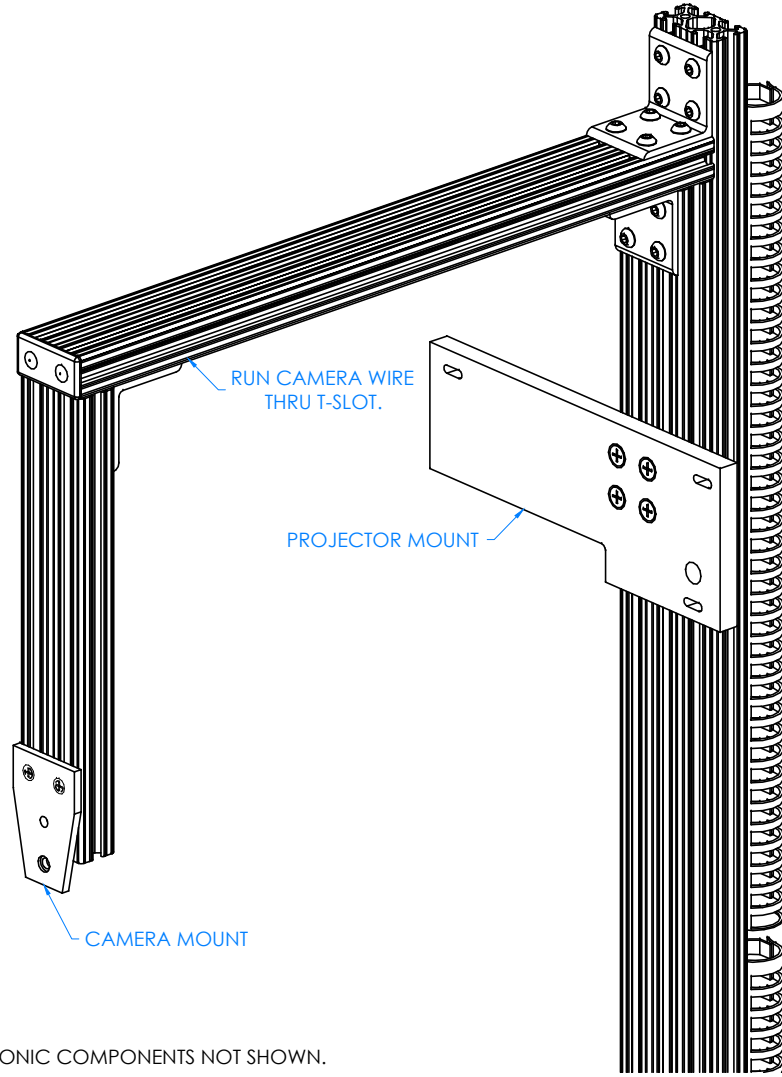
CONFIDENTIAL:
 ALL DESIGN RIGHTS RESERVED
 THE INFORMATION, DATA, DESIGN, AND DRAWINGS EMBODIED IN THIS DOCUMENT AND ALL REPRODUCTIONS THEREOF ARE THE EXCLUSIVE PROPERTY OF DIVERSIFIED WOODCRAFTS, INC.

THESE DOCUMENTS ARE SUPPLIED WITH THE UNDERSTANDING THAT THEY WILL NOT BE DISCLOSED TO THIRD PARTIES WITHOUT WRITTEN CONSENT OF DIVERSIFIED WOODCRAFTS, INC. ANY REPRODUCTION IN PART OR WHOLE WITHOUT WRITTEN CONSENT IS SUBJECT TO LEGAL ACTION.



TITLE:
 AUGMENTED REALITY SANDBOX ASSEMBLY INSTRUCTIONS

DRAWING NUMBER:	ARS-4030	SCALE:	NTS	SHEET:	16 OF 19	REVISION:	REV A
-----------------	----------	--------	-----	--------	----------	-----------	-------



STEP 14:

- PLUG IN WIRES TO PROJECTOR PRIOR TO MOUNTING IF APPLICABLE - SEE SHEET 19 ON THE WIRING DIAGRAM.
- LINE PROJECTOR UP WITH THE (3) MOUNTING HOLES IN BRACKET AND ATTACH USING THE (3) SCREWS (PN 252719) PROVIDED.
- SNUG THE SCREWS AND MAKE SURE PROJECTOR IS AS PARALLEL TO SANDBOX AS POSSIBLE AND TIGHTEN.
- BOLT KINECT 3D CAMERA ONTO CAMERA MOUNT.
- DOUBLE CHECK TO MAKE SURE LENS ON PROJECTOR IS IN LINE WITH THE KINECT CAMERA, IF NOT ADJUST PROJECTOR MOUNTING BLOCK UP OR DOWN AS NEEDED AND RE-MOUNT PROJECTOR.
- KINECT CABLE CAN BE RUN INSIDE THE T-SLOT ON SIDE OR TOP OF ALUMINUM OR.

NOTE:

1. ELECTRONIC COMPONENTS NOT SHOWN.

ALL DIMENSIONS ARE IN INCHES UNLESS NOTED OTHERWISE	DWN BY:	EMR	DATE DWN:	12/22/16
DECIMALS: $X = \pm .000$	APR BY:		DATE APR:	
$XX = \pm .020$	APR BY:		DATE APR:	
$XXX = \pm .010$	APR BY:		DATE APR:	
ANGLES: $= \pm 1^{\circ}0'$	APR BY:		DATE APR:	
CABINET SQUARENESS: $= \pm .0625$	APR BY:		DATE APR:	

CONFIDENTIAL:
 ALL DESIGN RIGHTS RESERVED
 THE INFORMATION, DATA, DESIGN, AND DRAWINGS EMBODIED IN THIS DOCUMENT AND ALL REPRODUCTIONS THEREOF ARE THE EXCLUSIVE PROPERTY OF DIVERSIFIED WOODCRAFTS, INC.

THESE DOCUMENTS ARE SUPPLIED WITH THE UNDERSTANDING THAT THEY WILL NOT BE DISCLOSED TO THIRD PARTIES WITHOUT WRITTEN CONSENT OF DIVERSIFIED WOODCRAFTS, INC. ANY REPRODUCTION IN PART OR WHOLE WITHOUT WRITTEN CONSENT IS SUBJECT TO LEGAL ACTION.



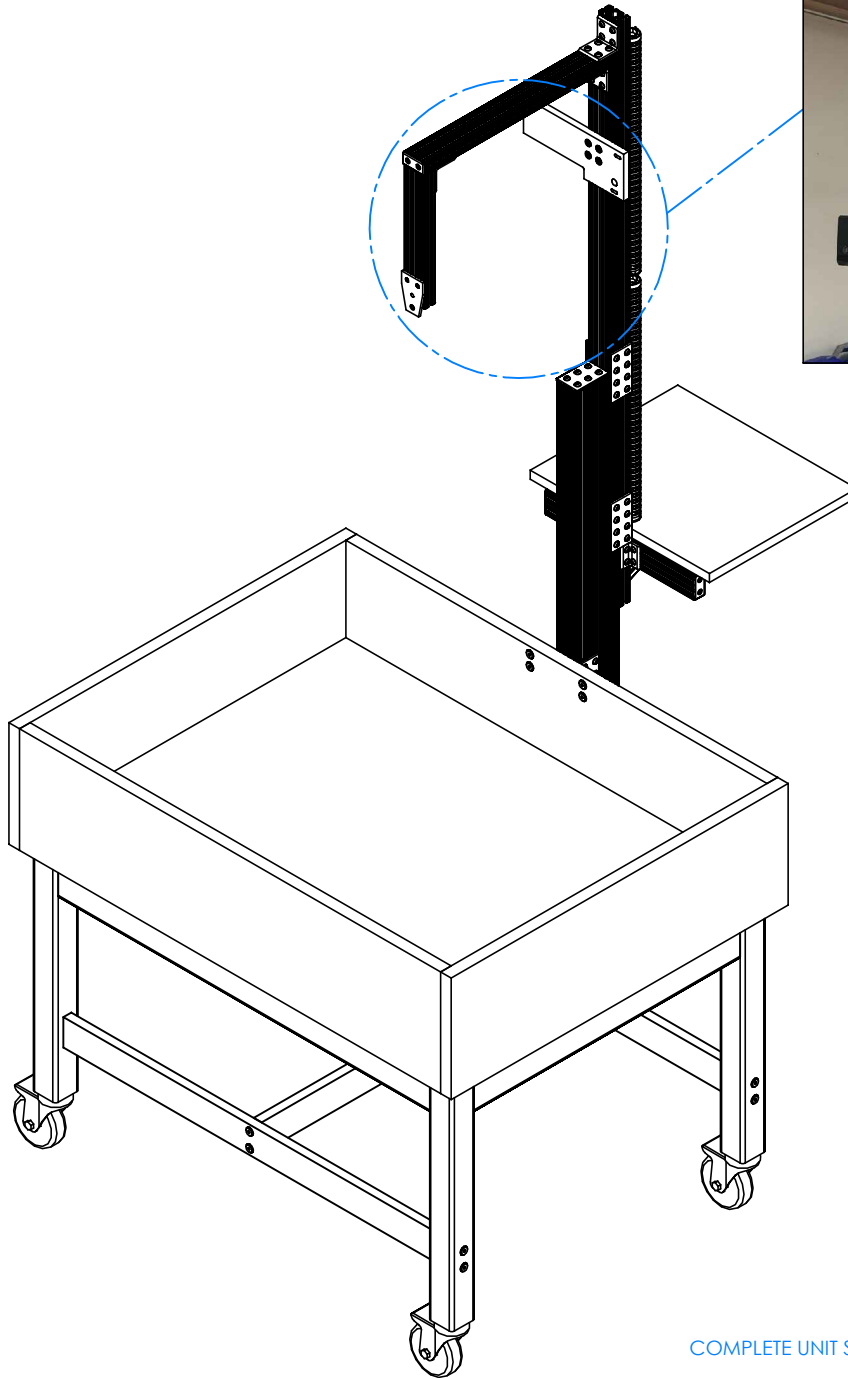
TITLE:
**AUGMENTED REALITY SANDBOX
 ASSEMBLY INSTRUCTIONS**

REV.	DESCRIPTION	DATE	NAME	ECN NO.
A	CREATED DRAWING	12/22/16	EMR	-
REVISION LEVEL				

DRAWING NUMBER:	SCALE:	SHEET:	REVISION:
ARS-4030	NTS	17 OF 19	REV A

STEP 15:

- YOUR AUGMENTED REALITY SANDBOX IS NOW ASSEMBLED.
- WE RECOMMEND USING SANDTASTIK THERAPY SAND BUT ANY DRY, WHITE SAND WILL WORK - IT WILL TAKE 200-250LBS.
- SAND SHOULD BE FILLED AT LEAST HALFWAY UP THE BOX.
- SETUP AND CALIBRATE LAPTOP AND PROJECTOR BY PLUGGING IN ELECTRONIC COMPONENTS AND CONNECTING FLASH DRIVE TO IT - FURTHER INSTRUCTIONS WILL FOLLOW.
- PROCEED WITH THE SETUP - SEE SHEET 19 FOR WIRE DIAGRAM.



COMPLETE UNIT SHOWN


NOTE:

1.

ALL DIMENSIONS ARE IN INCHES UNLESS NOTED OTHERWISE	DWN BY:	EMR	DATE DWN:	12/22/16
DECIMALS: .X = ± .030	APR BY:		DATE APR:	
.XX = ± .020	APR BY:		DATE APR:	
.XXX = ± .010	APR BY:		DATE APR:	
ANGLES: ± 1°	APR BY:		DATE APR:	
CABINET SQUARENESS: ± .0625	APR BY:		DATE APR:	

CONFIDENTIAL:
ALL DESIGN RIGHTS RESERVED
THE INFORMATION, DATA, DESIGN, AND DRAWINGS EMBODIED IN THIS DOCUMENT AND ALL REPRODUCTIONS THEREOF ARE THE EXCLUSIVE PROPERTY OF DIVERSIFIED WOODCRAFTS, INC.

THESE DOCUMENTS ARE SUPPLIED WITH THE UNDERSTANDING THAT THEY WILL NOT BE DISCLOSED TO THIRD PARTIES WITHOUT WRITTEN CONSENT OF DIVERSIFIED WOODCRAFTS, INC. ANY REPRODUCTION IN PART OR WHOLE WITHOUT WRITTEN CONSENT IS SUBJECT TO LEGAL ACTION.

		TITLE:		
		AUGMENTED REALITY SANDBOX ASSEMBLY INSTRUCTIONS		
DRAWING NUMBER:		SCALE:	SHEET:	REVISION:
ARS-4030		NTS	18 OF 19	REV A

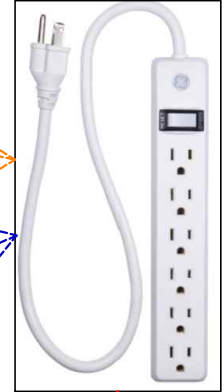
REV.	DESCRIPTION	DATE	NAME	ECN No.
A	CREATED DRAWING	X/X/X	XYZ	N/A
REVISION LEVEL				

WIRING DIAGRAM

PROJECTOR
P# 252555



POWER STRIP
NOT SUPPLIED



POWER CORD
SUPPLIED WITH PROJECTOR

6' HDMI CORD
P# 252579

LAPTOP
P# 257897



POWER CORD
SUPPLIED WITH LAPTOP

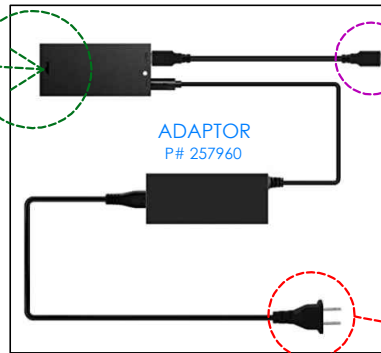
CAMERA
P# 257910-U



USB CORD
SUPPLIED WITH ADAPTOR

PLUG IN CORD
SUPPLIED WITH ADAPTOR

CAMERA CORD
SUPPLIED WITH CAMERA



NOTE:

1. IMAGES MAY NOT REPRESENT EXACT MODELS PURCHASED - THIS IS JUST A VISUAL.

ALL DIMENSIONS ARE IN INCHES UNLESS NOTED OTHERWISE	DWN BY:	EMR	DATE DWN:	12/22/16
DECIMALS: X = ± .030	APR BY:		DATE APR:	
XX = ± .020	APR BY:		DATE APR:	
XXX = ± .010	APR BY:		DATE APR:	
ANGLES: ± 1°				
CABINET SQUARENESS: ± .0625				



CONFIDENTIAL:
ALL DESIGN RIGHTS RESERVED
THE INFORMATION, DATA, DESIGN, AND DRAWINGS EMBODIED IN THIS DOCUMENT AND ALL REPRODUCTIONS THEREOF ARE THE EXCLUSIVE PROPERTY OF DIVERSIFIED WOODCRAFTS, INC.

TITLE:
AUGMENTED REALITY SANDBOX
ASSEMBLY INSTRUCTIONS

THESE DOCUMENTS ARE SUPPLIED WITH THE UNDERSTANDING THAT THEY WILL NOT BE DISCLOSED TO THIRD PARTIES WITHOUT WRITTEN CONSENT OF DIVERSIFIED WOODCRAFTS, INC. ANY REPRODUCTION IN PART OR WHOLE WITHOUT WRITTEN CONSENT IS SUBJECT TO LEGAL ACTION.

DRAWING NUMBER:

ARS-4030

SCALE:

NTS

SHEET:

19 OF 19

REVISION:

REV A

REV.	DESCRIPTION	DATE	NAME	ECN No.
A	CREATED DRAWING	X/X/X	XYZ	N/A
REVISION LEVEL				