



AP-450 Ceiling Lift

Portable Lifting Solution for Any Room

The AP-450 Advantage

A good lift does two things: goes up and goes down, safely and reliably. Built on an industry-leading reputation for reliability proven over the past decade, Handicare's new AP-450 portable ceiling lift raises patient handling technology to the next level—wherever you need it. Reducing injuries for patients and caregivers alike, the AP-450 portable ceiling lift is quiet, smooth and features a lift capacity up to 450 lbs.

The AP-450 is the next step in portable ceiling lift technology—raised to the next level.



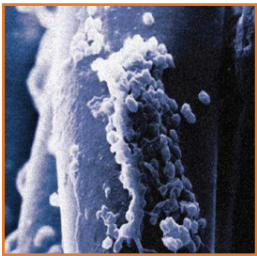
Antimicrobial Strap with Wear Indicator Marks

The **advantage** of reduced risk

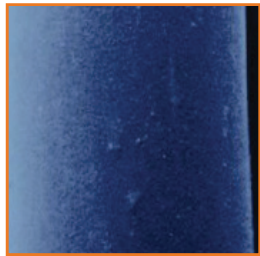
Active Shielding

In medical environments, microbes proliferate. Protecting patients from infection that can spread like wildfire is a challenge every healthcare facility faces. Handicare AP-450 ceiling lifts provide you one more shield against infection for your patients.

Microbe Growth: Untreated Strap vs. AP-450 Strap



Microbe growth on untreated strap fibres



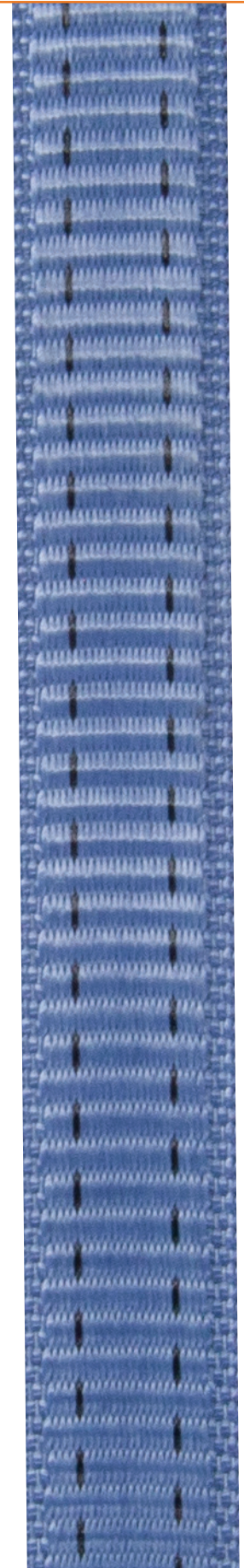
Growth on treated Handicare AP-450 Series strap fibres

Easy Maintenance

Easy to clean and disinfect, AP-450 lifts include a strap that has been treated with a specialized antimicrobial coating at the fibre level. The coating inhibits microorganisms' ability to grow on the surface of the material, thereby reducing the risk of infection while improving both safety and outcomes for patients.

Monitor Wear

Our lift strap also features wear indicator marks so you know when it needs to be replaced. And its reinforced edges protect against fraying and normal wear-and-tear to enhance the overall life of the strap.



Hand Control with Active Status Display

The **advantage** of real-time feedback



Intuitive Design

The first portable ceiling lift to feature an Active Status Display — no need to look up and guess what the lights on your lift are telling you anymore. The AP-450 hand control puts all lift data, diagnostic, and movement information right in the palm of your hand.

The full color backlit display makes the hand control easy to read while waterproof technology protects the unit from outside moisture.

- 1 Control
- 2 Data Collection

Accessible Controls

An integrated control panel is located on the front of the lift for easy accessibility. Here you can find buttons to raise and lower the patient, battery status indicators and the E-Down button for emergency lowering. An Emergency Shutoff Switch is also located on the back for additional safety.



Handset Charging with Increased Battery Life

The **advantage** of accessible charging

Highest Rated Battery of any Portable Lift

Equipped with an industry leading high capacity rechargeable battery, the AP-450 provides 175% more lift cycles than our previous generation portable ceiling lifts. A workhorse that can do much more before requiring a recharge.



175% More
Lift Cycles

*over previous generation lifts

Charge your Lift Hassle Free

The AP-450 comes standard with handset charging making it easier to charge your lift every day. Simply plug your charging adapter into the hand control to begin charging your lift. Wall receptacles that are far away are easier to get to now that you have the added length of the hand control.



Proven and Always Dependable
The **advantage** of ultimate safety



Revolutionary **SafeGuard** Hook

Designed for safety the AP-450 **SafeGuard** Hook features a unique side loading system and closed loop design that minimizes sling loop migration.

For added safety the **SafeGuard** hook is designed to be 100% load bearing anywhere on the inside, outside, and even the latch itself.

The hook pivots upwards when not in use for added convenience and portability.

Easy Service

The AP-450 is easy to maintain and service, the top cover of the lift can be easily removed and service can be done while the lift is still on the track with access to all serviceable parts.



Active Angle Detection with Safety Sensors

The **advantage** of technology + security



ActiveSense Tilt Detection

The first portable ceiling lift to utilize state of the art active gyrometric and safety sensors, the AP-450 with **ActiveSense** Tilt Detection can automatically detect when users are incorrectly tilted at unsafe lifting angles. An audible warning is given to the healthcare professional during the transfer allowing them to correctly re-position the user before continuing. The addition of **ActiveSense** also greatly reduces strap wear along with overall stress on the lift.

Go Anywhere With Ease

Lightweight and portable, the AP-450 portable lift can be removed from one track and installed in another, quickly and easily, giving you the freedom to share a single lift unit with fixed or portable ceiling track systems in multiple rooms.



AP-450

Specifications

Motors

Lift Motor: 24 VDC

Safe Working Load (SWL)

204 kg (450 lb)

Dimensions (L x W x H)

365 x 209 x 190 mm
(14 x 8.2 x 7.5 in)

Unit Weight

5.5 kg (12.2 lb)

Lift Case

Flame Retardant ABS

Safety

ActiveSense Tilt Detection

SafeGuard Hook

Antimicrobial Strap

with Wear Indicator Marks

Emergency Stop

Emergency Lowering

Low Battery Indicator

Standards

IEC 60601-1:2005/A1:2012

IEC 60601-1-6:2010/A1:2013

IEC 60601-1-11:2015

IEC 62366:2007/A1:2014

ISO 10535:2006

IEC 60601-1-2:2014 (Ed 4.0)

Hand Control

Digital

IPx6 and IPx7 Rating

Service Life

10 Years or 22,500 Cycles

Rated Performance

80 lifts at Max Load

Maximum Sound Level

50 dB

Batteries

Single 24V 4.0AH

(20 cell 1.2V) NiMH battery

Charger Model

PS2403SRM26

Charger Input

100-240 VAC 0.5 Amps, 50-60 Hz

Charge Output

24 VDC, 1.33 Amps

Lifting Range

Up to 1960 mm (77 in)

Duty Cycle

1 Min "On"

9 Mins "Off"

Part Numbers



AP-450: Lift Up to 204 kg (450 lb)
303060: Portable Ceiling Lift

We're Trusted.

Over **275,000** ceiling lift installations across North America

We're Experts.

Handicare handles the installation and provides **FREE on-site training** for your staff.



Take your safe patient handling to the next level
- or anywhere - with portable ceiling lift technology.