



## Assembly Instructions

### AM Series Crank Remover

Part Number 40-0103

Works with AM-12, AM-16, AM-9

#### Tools Needed

14 mm Socket & Ratchet for AM-12 or AM-16

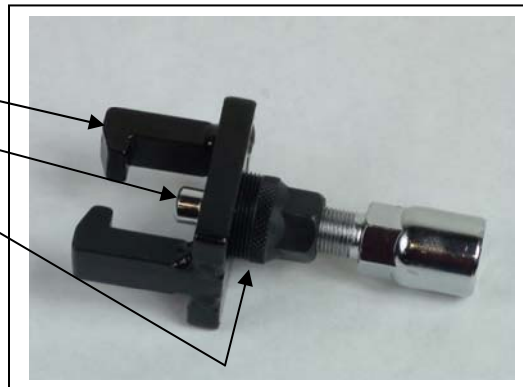
Flat Head Screw Driver

16 mm or Adjustable Wrench

6 mm Allen Wrench for AM-9

### AM-12 & AM-16 Crank Removal Instructions

Puller Jaw  
Forcing Screw  
Crank Adaptor



- 1) Use a Flat Head Screw Driver and pry off the grey crank cap that covers the crank securing bolt.



2) Use a 14 mm Socket and Ratchet and turn the crank arm securing bolt counter clockwise until crank arm securing bolt is completely removed.



3) Remove the crank adaptor from the puller jaw by turning it counter clockwise.

*Note: The puller jaw is not used on the AM-12 or AM-16 crank arm removal.*



4) Screw the crank adaptor into the crank arm fully by turning it clockwise.

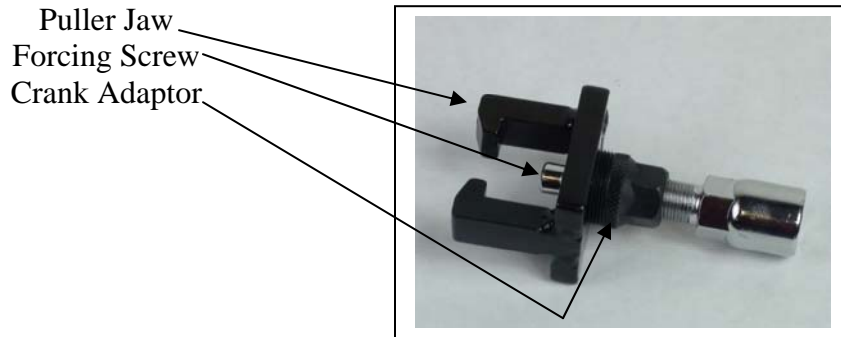
*Note: The crank adaptor must be fully seated into the crank arm or it will destroy the inner crank arm threads.*



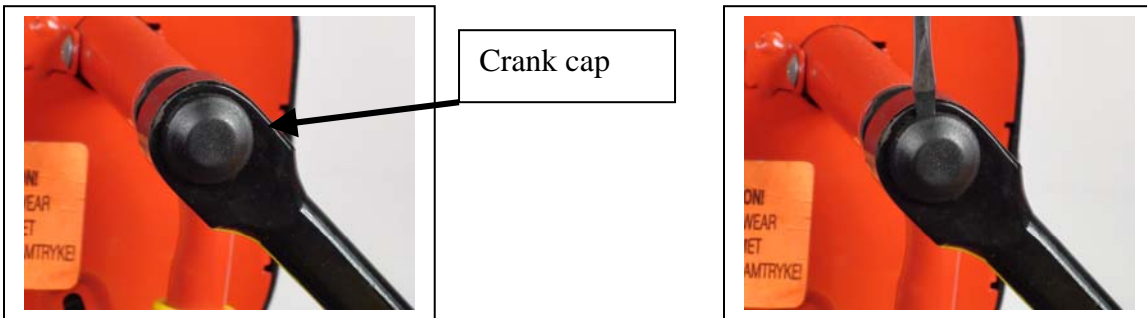
5) Using either a 16 mm wrench or adjustable wrench turn the forcing screw clockwise until the crank arm slides off the shaft.



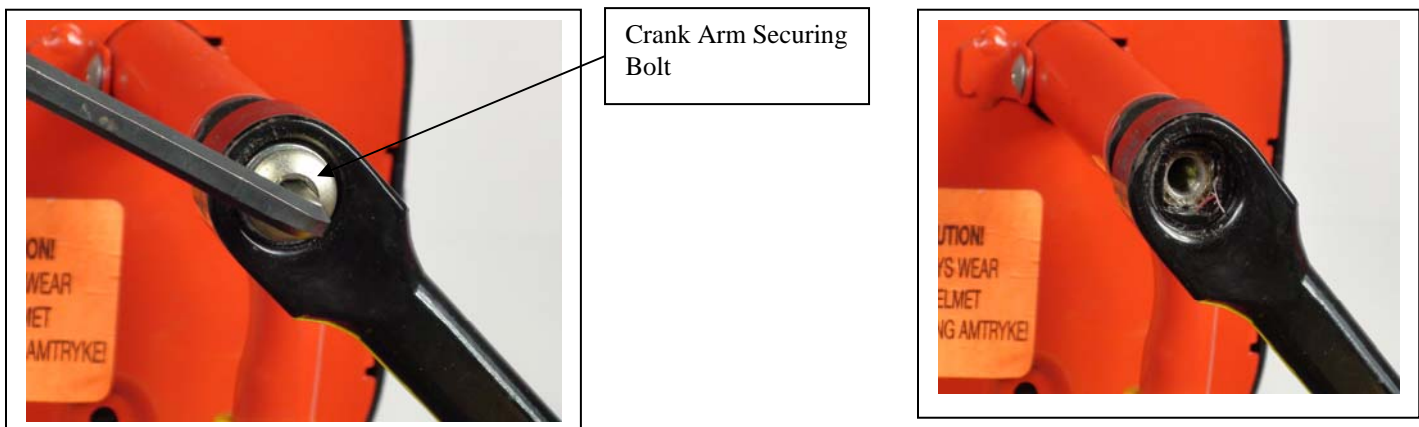
## AM-9 Crank Removal Instructions



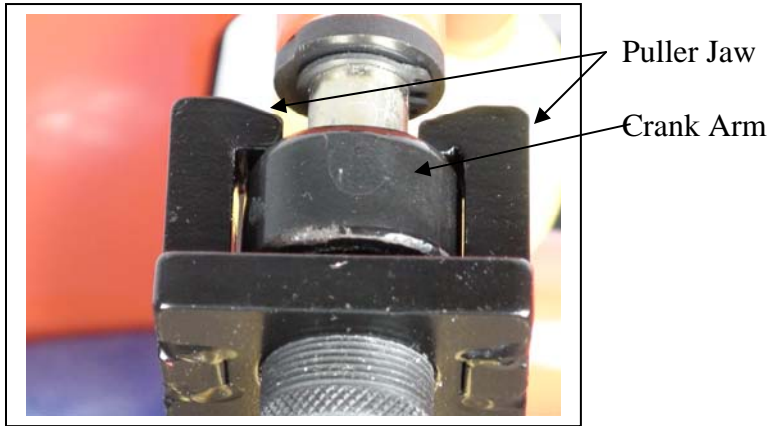
1) Use a Flat Head Screw Driver pry off the black crank cap that covers the crank securing bolt.



2) Use the 6 mm Allen Wrench and insert it into the Allen Bolt and turn counter clockwise until crank arm securing bolt is completely removed.



3) Slide crank removal tool over crank arm making sure that puller jaw is behind crank arm.



4) Use either a 16 mm or adjustable wrench and turn the forcing screw clockwise until the crank arm slides off of the shaft.

