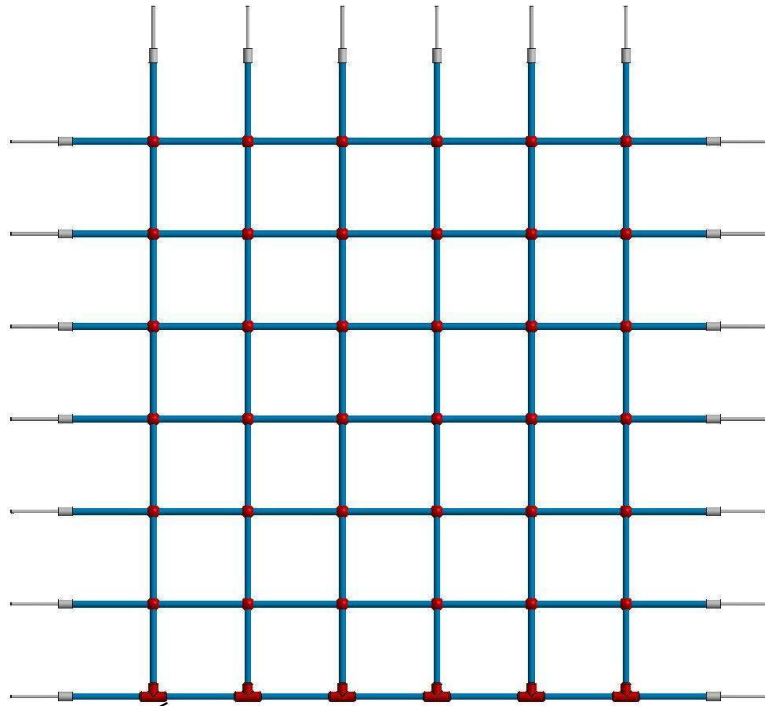


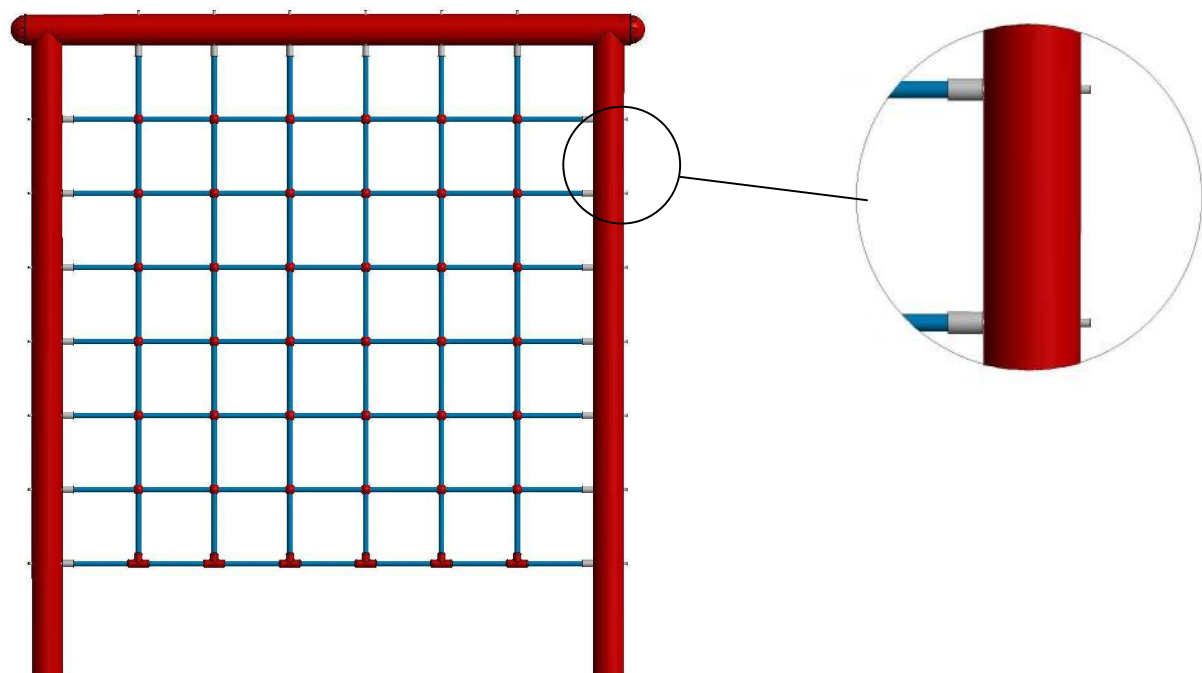
Ropewall Assembly Plan

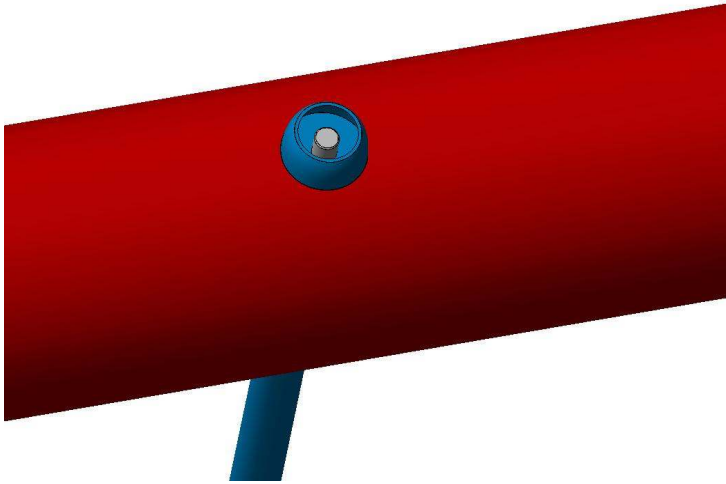
1. Remove the ropes and metal component from their packages.
2. Make the metal component stand straightly on the wall's assembly surface.
3. Fix the metal component to the concrete.
4. After the fixing operation mentioned in entry 3 had been finished, the ropes are fixed to the system.
5. During the assembly of the ropes, pass the stainless M10x140 bolts, which are on the rope system, through the holes of the metal component.
6. The assembly of the bolts is showed on the pictures below in detail.



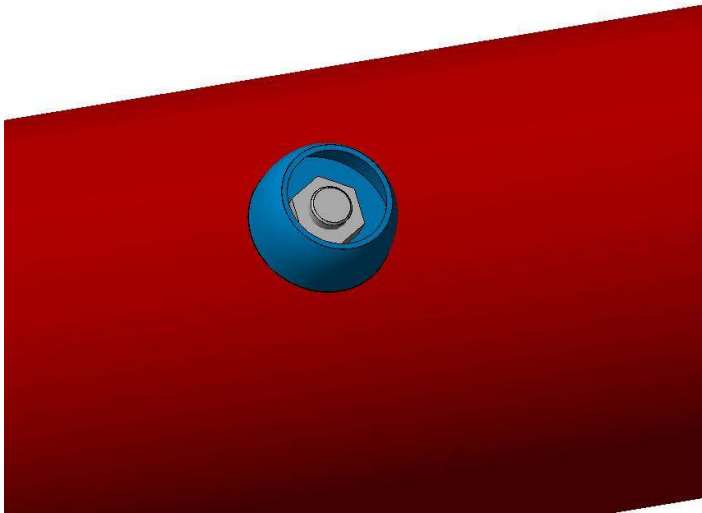
The plastic connection part should be at the bottom.

All the connection bolts of the system are stainless M10x140 bolts.

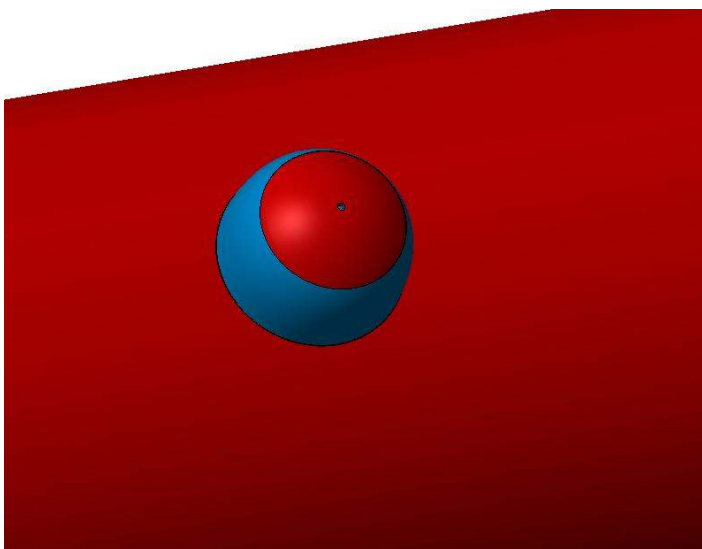




A.) After the tip bolts of the rope system had been passed through the holes, attach the bolt covers to the bolts.



B.) After the bolt covers had been attached to the bolts, tighten the nut with the key which is suitable for the bolt.



C.) After the nut had been tightened, attach the plug of the bolt cover.