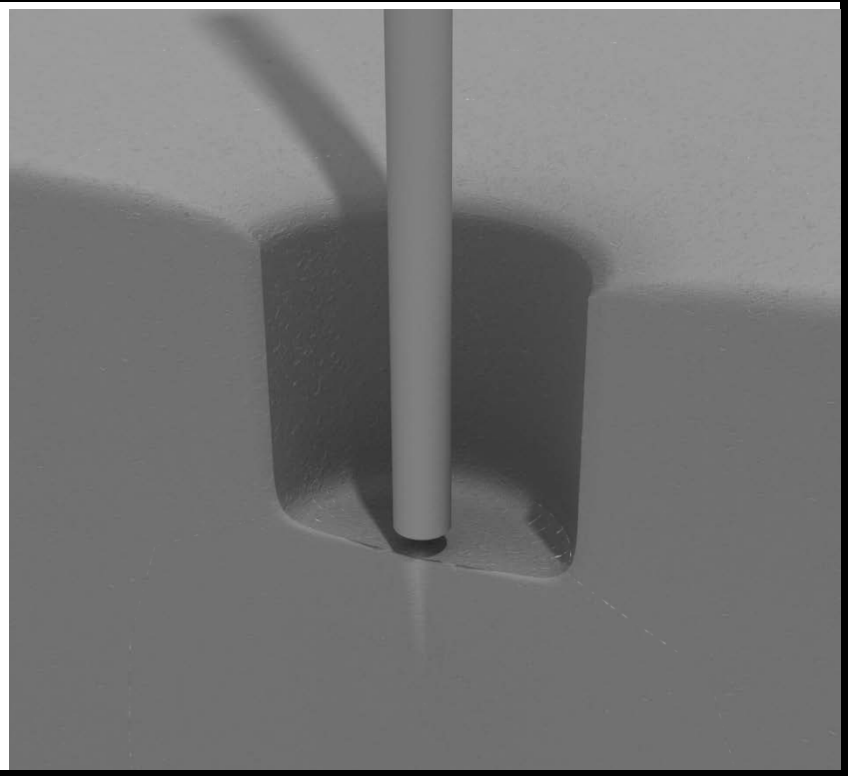


3 Panel Cyclone Challenger Install

STEP: 1

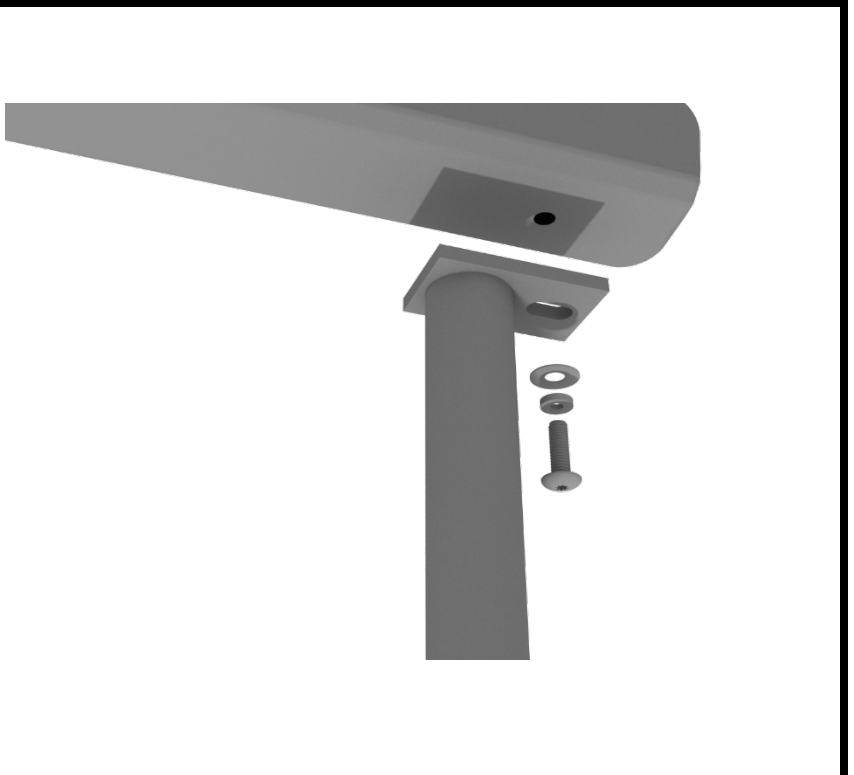
DO NOT CEMENT POSTS INTO PLACE UNTIL THE ENTIRE STRUCTURE IS ASSEMBLED.

Refer to the General Installation guide footing information and dig proper holes for the support posts.



STEP: 2

See general installation guide regarding footing information for the cyclone challenger. Then, attach each support mount to the bottom of the climber using one (1) M10*20 bolt, one (1) M10 spring washer, and one (1) M10 washer.

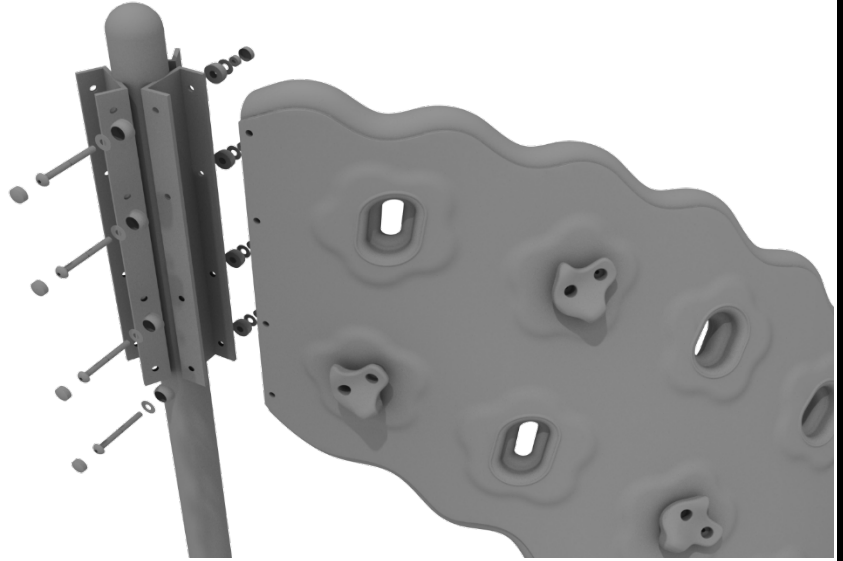


Created By: Aaron Price
Date Modified: 04/27/18

3-Panel Cyclone Challenger Install

STEP: 3

Attach each climber to the support post bracket using four (4) M10*130 bolts, eight (8) M10 washers, four (4) M10 lock nuts, and eight (8) plastic bolt covers.



Created By: Aaron Price
Date Modified: 04/27/18