



## Instruction Sheet: Large Marble Wall 303807

Store these instructions along with the enclosed maintenance checklist in a safe place. You may also access them on our website.



Take time to familiarize yourself with the use and maintenance of this equipment before using. Please file this Instruction Sheet in an accessible location. The Instruction Sheet must be read and familiar to anyone who is using Southpaw Enterprises Equipment.

**IMPORTANT: Please check equipment immediately for any damage that may have resulted during shipping.**

### MATERIALS LIST:

Marble Wall  
3 - 2 x 4's  
6 Wall Anchors  
7 - #8 Panhead Wood Screws

Instruction Sheet  
Maintenance Checklist

### TOOLS NEEDED:

Drill  
1/2" Drill Bits

### INSTALLATION:

Position the longer 2" x 4" lengthwise level on the wall at top height where activity wall will be placed. Drill holes through 2 x 4 into wall. Set anchors and secure 2" x 4" to the wall. Set activity wall on 2" x 4", mark where the bottom and sides of the activity wall are, remove activity wall. From the marks that have been made on the wall, mark another line 1/2" above and inside those lines and position the two smaller 2 x 4's vertically, making certain that they are straight. Repeat above steps for mounting 2 x 4. Replace activity wall, secure wall to the 2" x 4" frame with wood screws on the top and sides.

### MAINTENANCE CHECKLIST

✓All of the following wear points should be checked on a monthly basis and recorded on the checklist enclosed:

- Check the wood surface and edges for splinters. If found, discontinue use until repaired. You may repair it by sanding the area smooth with a medium grit sandpaper, and applying two coats of clear lacquer to the repaired area.
- Check all components to make certain they remain secured to activity wall.

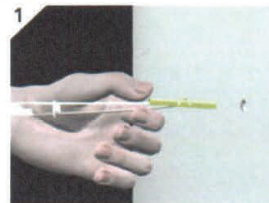
### MATTING PRECAUTIONS:

- Always use appropriate matting under and around equipment.

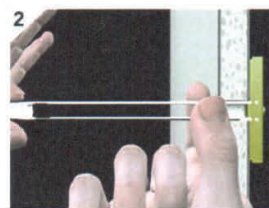
### CLEANING INSTRUCTIONS

- Check with your infectious disease department before using these procedures.
- Check for client allergies first.
- Clean with a damp rag and a mild surface cleaning solution.
- Let air dry or wipe dry with a cloth.

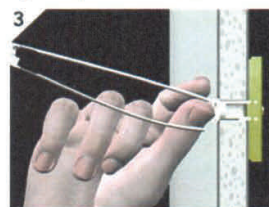
### Step-By-Step



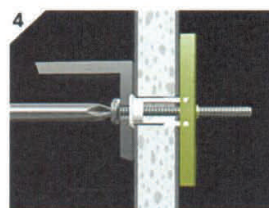
Drill a 1/2" (Ø13mm) hole. Hold metal channel flat alongside plastic straps and slide channel through hole. Minimum clearance behind wall: 1-7/8" (48mm).



Hold ends of straps between thumb and forefinger and pull toward you until channel rests flush behind wall. Slide plastic cap along straps with other hand until flange of cap is flush with wall.



Snap straps at wall by pushing side to side, snapping off straps level with flange of cap.



Place item over flange. Insert bolt through item and tighten until flush against item, then stop.

**Safety Precautions** - The safety of your clients is dependent on the appropriate choice of activity to match, yet challenge their physical abilities. Use appropriate spotting / safety techniques. In addition, the layout of your activity area, proper installation and maintenance of your equipment is critical. Southpaw equipment is not intended for recreational or outdoor use. Under no condition should this equipment be used without proper supervision.

**This sheet is for example only.** It is not meant to, in any way, replace local, county, state, or Federal standards. Be aware - it is your responsibility to find all pertinent safety information that pertains to your facility.