



## Assembly Instructions: 1410 Foot Cycle Early Intervention

### Part #: 50-FC-0100

Refer to the following instructions on how to assemble your tryke. Study the instructions carefully before beginning assembly and follow the sequence shown in the instructions.

Be careful when assembling your tryke. Make sure that your working area is free of possible sources of danger, such as tools lying around.

**WARNING: THERE IS ALWAYS A DANGER OF INJURY WHEN WORKING WITH TOOLS OR DOING MANUAL**

Always dispose of packaging material properly. Do not let children play with plastic bags.

**WARNING: THERE IS A RISK OF SUFFOCATION WITH PLASTIC BAGS. KEEP PLASTIC BAGS AWAY FROM CHILDREN.**

When assembling your tryke, bolt all parts together loosely at first and check that they have been put together correctly. Tighten lock nuts by hand until snug; then use proper tools to tighten nuts completely.

**CAUTION: CHECK THAT ALL SCREWS HAVE BEEN SECURELY TIGHTENED BEFORE USING YOUR TRYKE.**

### Getting Started

Your AmTryke is shipped in parts. Carefully remove and lay out all parts from the carton so that you don't scratch or lose any parts or pieces. Check that you have all the necessary parts. If any parts are missing, please call us at 1-888-AMTRYKE for assistance.



Remove packaging material and discard. See the following picture to identify different parts:





## TOOLS REQUIRED:

- Phillips Head Screwdriver
- 5 and 6 mm Allen wrench (incl.)
- 10 mm wrench/socket
- 14 and 15 mm wrench (incl.)
- 22 mm socket or adjustable wrench
- Quick release wrench (incl.)
- Heavy pliers or crimping tool

## Frames

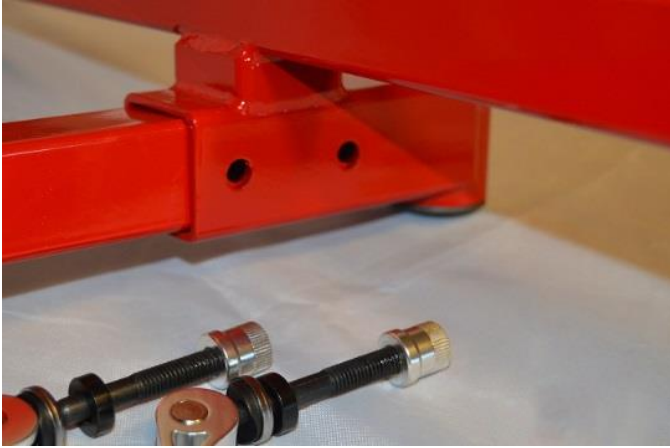
Your tryke is shipped with the front wheel already attached to the main frame. Start assembling your tryke by first sliding the seat post bracket onto the main frame. Seat post bracket needs to be situated on the right hand side of tryke—this leave room for a rear steering kit.



**NOTE:** The two seat post bracket knob holes should be on the bottom left side of the tryke.

Put the two seat post bracket knobs into their holes but do not completely tighten the knobs (that is done when the tryke is adjusted for the rider).

To attach the frames, slide the rear frame onto the main frame.



**NOTE:** Pay attention to orientation. Rear axle is on top of the frame assembly and vertical post for loading lock is on right side of tryke.



**TIP:** Use the quick release wrench to easily tighten quick release levers.

**CAUTION:** QUICK RELEASE LEVERS MUST BE FULLY TIGHTENED BEFORE RIDING. TIGHTEN LEVERS UNTIL SNUG AND PUSH DOWN AGAINST FRAME. MAKE SURE THEY DO NOT WOBBLE.

## Back Wheels

To install the back wheels, follow these steps:

1. Slide the wheels onto the axle and secure them with a washer and nut. Tighten securely with a 22 mm socket or adjustable wrench, but do not over tighten.
2. Install black plastic nut caps over the axel nuts. Tap with the palm of your hand to secure in place.

**CAUTION:** MAKE SURE BACK WHEELS ARE FULLY TIGHTENED BEFORE RIDING.



## Loading Brake

Loading brake is used to help transition rider on/off the tryke safely and easily. To install the loading brake, slide it on the rod on the rear frame. You may need to remove plastic cap located on top—remember to replace when loading brake is installed. Tighten the loading brake nuts with a 10 mm wrench or socket.



**NOTE:** Top of the loading brake should be flush with the top of tube. Make sure that the lever is not touching the tire. The handle needs to be in line with the tire and point toward the front of the tryke.



**⚠ WARNING: DO NOT USE LOADING BRAKE FOR BRAKING. DOING SO MAY CAUSE SERIOUS INJURY.**

## Handlebar

To install the handlebar, slide the handlebar stem into the top of the front fork. When situated properly, tighten the stem collar at the top using the Allen wrench provided.



**⚠ CAUTION: HANDLEBAR STEM MUST BE INSERTED INTO FORK HEAD TUBE TO AT LEAST MINIMUM INSERTION LINE (HASH MARKS). WHEN INSTALLED PROPERLY HASH MARKS ARE NOT VISIBLE.**

## Seat

Blue bucket seat installs using the two Philips screws, four washers and two nuts you were provided with:

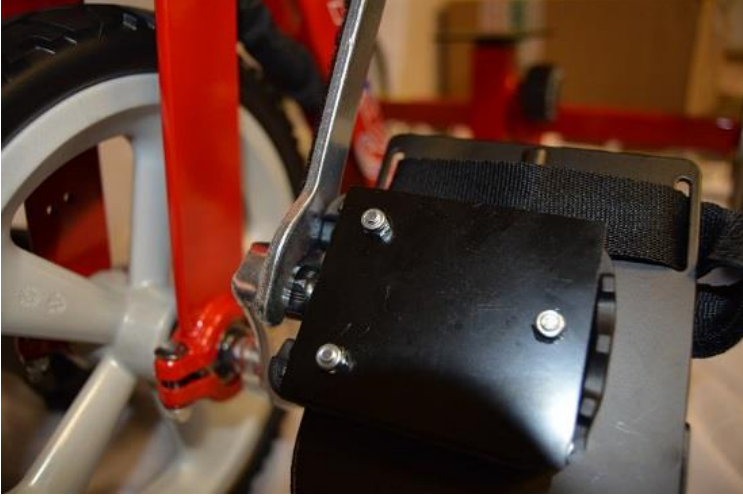
1. Line up the holes on the bottom of the seat with the holes on the black seat post. There are several sets of mounting holes on the seat post—for smaller riders, position the seat forward. As the child grows, move the seat back.
2. Install/align the two Philips head screws, with washers on both top and on bottom, followed by acorn nuts. When in place, tighten securely with an 8 mm wrench paired with Philips head screwdriver.
3. Install seatbelt by inserting the loop section over the seat post. This may require you to remove the seat post if already installed. To install the adjustable belt, install screws in the back of the blue bucket seat with a Philips head screwdriver. The remaining loop is to be placed inside adjustable belt as seen in picture.



 **WARNING: FINAL ADJUSTMENTS FOR RIDER'S SIZE MUST BE MADE FOR SEAT BEFORE RIDING. LEVERS MUST BE FULLY TIGHTENED OR INJURY COULD RESULT.**



## Pedals



**TIP:** Pedals and pedal cranks are labeled “R” (right) and “L” (left).

**TIP:** Pedal threads tighten toward front of bike.

Right pedal installs on the pedal crank labeled “R” and threads clockwise to tighten and the left labeled “L” threads counterclockwise. Hand thread until you are certain pedals are threaded properly and then use a 15 mm wrench to tighten.

**⚠ CAUTION: BE CAREFUL WHEN THREADING PEDALS. DO NOT FORCE. PEDALS THREAD EASILY WHEN INSTALLED PROPERLY.**

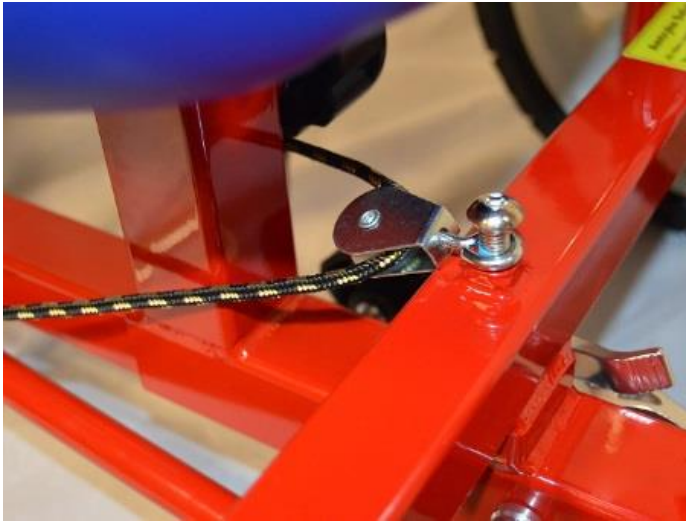
## Pedal Leveler Pulley

Pedal leveler pulley threads through the tubes on the bottom of each pedal:

1. Attach the pulley assembly on the back of the rear frame. Use the provided Allen head screw to secure it.
2. Start the pedal leveler cord at one pedal, thread through the pulley and then through the other pedal.
3. Pull the cord tight and either knot the end or pinch the end of the cord using the small tubing provided. Use a pair of heavy pliers or crimping tool to compress the tube. Trim off any excess cord.







## Steering Pin

If needed, insert the steering pin into the front fork tube from the side. Install the adhesive hook strip to the frame to keep the steering pin secure from loss. Three steering positions are available:

- Top position: Locks steering straight.
- Lower position: Limits steering to 20 degrees in either direction.
- No pin: Free steering.

**NOTE:** You may find it desirable to limit steering so the rider can concentrate on learning the pedal motion first.

Jiggle the front wheel assembly as you push the pin into the hole and through the other side of the fork tube. Pin should insert all the way to the split ring to be correctly seated. If the handlebar stem is placed too low in the fork, the steering pin will be blocked. If so, position the stem higher; just inserting it so the hash marks on the stem are inside the fork.

