



A NEW PASSIVE MOBILE LIFT

# Maxi 500

# Powered assistance for caregiver protection

From the busiest hospital to the smallest nursing home, caregivers are faced daily with the risk of crippling back pain and injury due to the manual moving and handling of patients/residents. With the right mechanical aids in place, caregiver safety can be improved and injury-related costs reduced. Easy to understand, simple to operate and offering maximum patient/resident comfort, Arjo patient/resident lifts are firmly established as the most appropriate ergonomic choice for today's professional nurse and caregiver.





# An efficient solution for everyday patient handling

Maxi 500™ combines proven lifting technology with the latest standards in safety, security and comfort for both patient/resident and caregiver alike. Compatible with a full range of head and body support slings, the electrically operated *Maxi 500* allows caregivers to give their undivided attention to the patient/resident during handling routines.

Using *Maxi 500*, one caregiver can safely and comfortably perform a wide range of everyday patient transfer tasks. And importantly, the caregiver can also raise a person who has fallen to the floor without needing to sit the patient/resident up first.

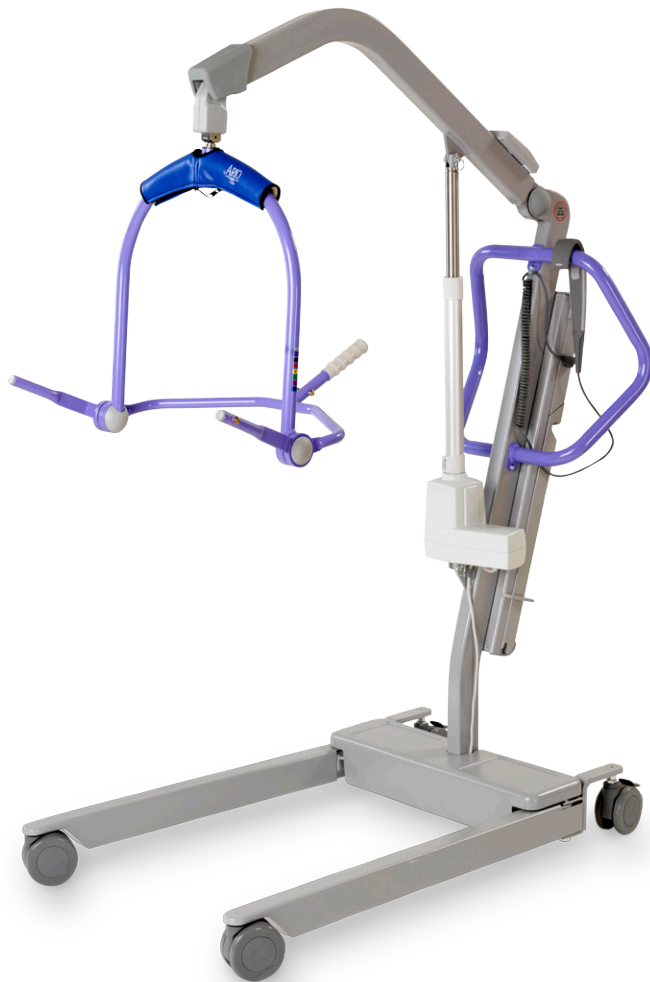
All power-assisted procedures can be closely controlled by the caregiver. With dual controls the caregiver can choose the most convenient solution for each task by using the handset or the mast control panel.

The adjustable chassis, operated from the handset, can be easily adjusted to allow optimum access for patient/resident transfers involving large chairs, wheelchairs or toilets.

*Maxi 500* is also available with a scale option, allowing the caregiver to quickly weigh the patient/resident during a transfer. Efficiently integrating weighing into transfer procedures saves time, eliminates a transfer to a fixed scale and makes the routine easier for patient/resident and caregiver.

# Key features

- Spreader bar is available in 2-point loop configuration or Arjo 4-point dynamic positioning system (DPS) compatible with a wide range of Arjo slings
- Boom with low reach makes it easy to pick up a patient/resident from the floor
- Powered lifting protects caregiver by minimizing physical effort
- Ergonomically designed push/pull handles reduce caregiver strain
- New low-friction castors provide excellent maneuverability and effortless transportation
- Dual controls allow the caregiver to operate lift from the handset or mast control panel
- Soft start/stop circuitry increases patient/resident comfort and security during procedures
- Optional electronic scale mounted on boom is convenient to use and maximizes lifting height



A single caregiver can safely raise a patient/resident from the floor.



The electronic scale option saves the caregiver's valuable time.



The electronic scale:

- Integrates weighing into transfer procedures
- Eliminates extra transfer to fixed scale
- Saves caregiver's time and reduces manual handling
- Makes weighing more comfortable for patients/residents



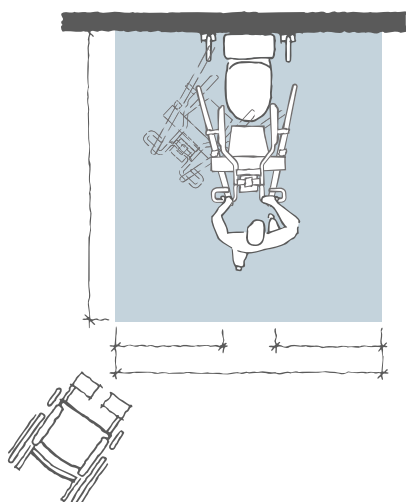
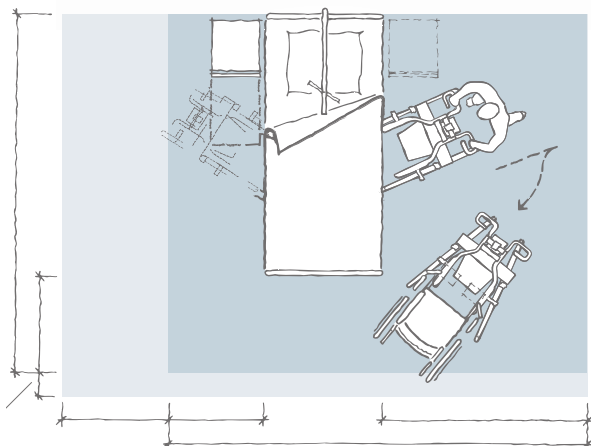
Chassis adjustment enables optimum lift positioning for toileting.



Operate efficiently via the handset or mast control panel. Ergonomically designed push/pull handles for smooth maneuvers.

# Product specifications

## SPACE REQUIREMENT



Blue area shows the minimum working area required for the staff to be able to use the mechanical aids in an ergonomic way from one side.

Light blue area shows required extension of working area to facilitate activities from either side to provide adequate access for the patient/resident, mechanical aid and assisting caregiver.

## PRODUCT INFORMATION

Maximum safe working load	500 lbs (227 kg)
Total weight	116½ lbs (53 kg)
Total lift height	52½" (1,334 mm)
Lifting height	25-72" (660-1,830 mm)
Height of chassis	4¾" (110 mm)
External width legs closed	25" (635 mm)
Internal width legs open	35¾" (910 mm)
Low friction castors, the rear two with brakes	
Battery	24 V 4Ah
Two batteries and a charger are supplied with each <i>Maxi 500</i>	
Protection class	Handset IP67 Lifter IPX4

Emergency stop and system failure override

### Approvals

The product is in compliance with current legislation and applicable product standards.

## MOBILITY GALLERY

Suitable for Doris and Emma



**D Doris**, who has no capacity to support herself

**E Emma**, who is almost completely bedridden and totally dependent

Please contact Arjo for further information on the Mobility Gallery™.

At Arjo, we are committed to improving the everyday lives of people affected by reduced mobility and age-related health challenges. With products and solutions that ensure ergonomic patient handling, personal hygiene, disinfection, diagnostics, and the effective prevention of pressure injuries and venous thromboembolism, we help professionals across care environments to continually raise the standard of safe and dignified care. Everything we do, we do with people in mind.