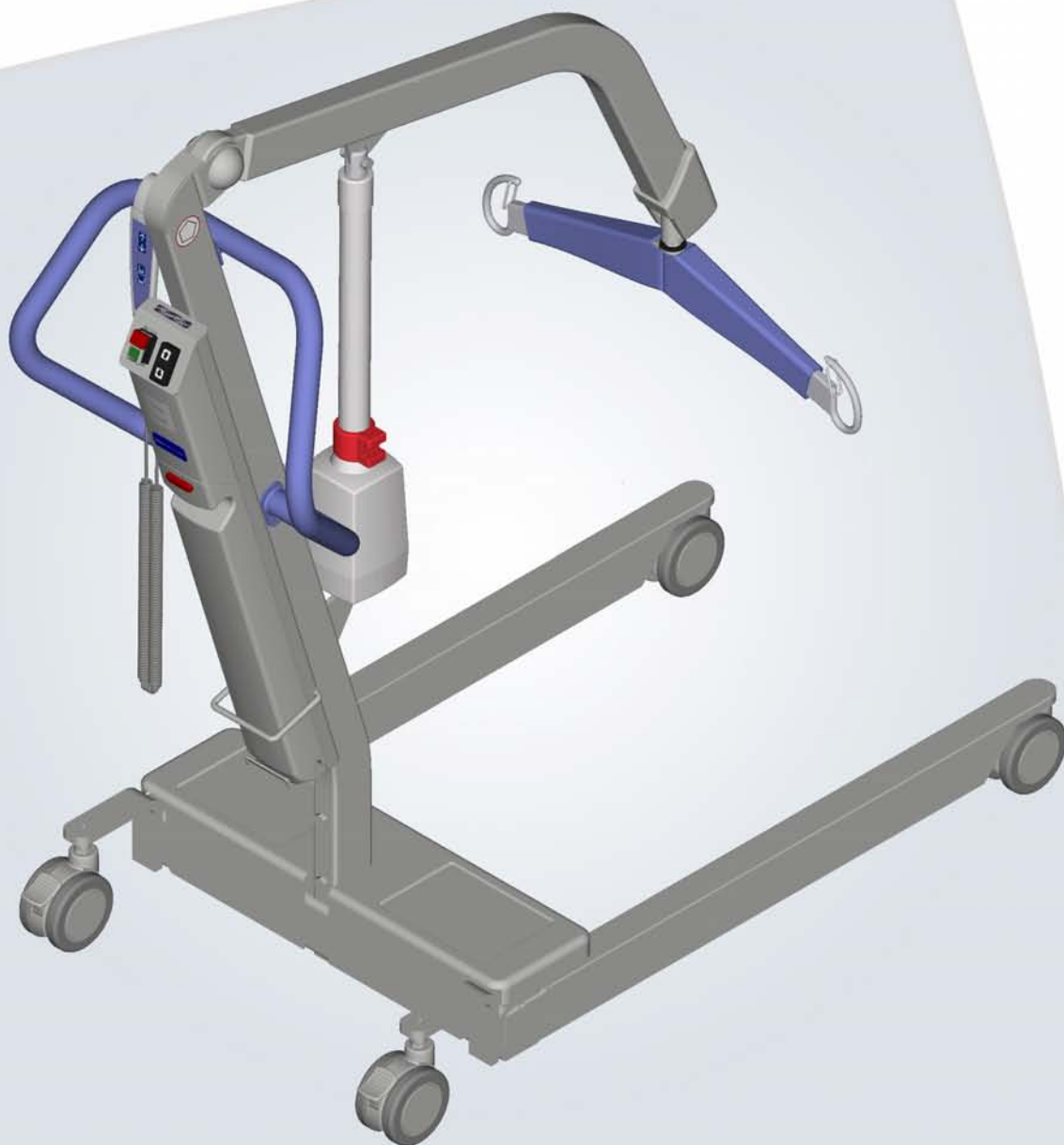


ARJOHUNTLEIGH

GETINGE GROUP

MAXI 500 Parts List



CE

Design Policy and Copyright

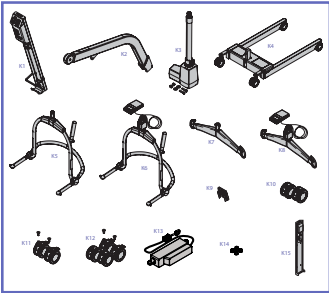
® and ™ are trademarks belonging to the ArjoHuntleigh group of companies.
© ArjoHuntleigh 2013.

As our policy is one of continuous improvement, we reserve the right to modify designs without prior notice. The content of this publication may not be copied either whole or in part without the consent of ArjoHuntleigh.

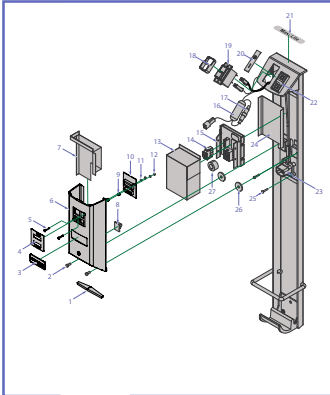
Table of Contents

- Serial Number Information4**
 - Serial Number Codification 4
 - Product Identification Label 4
- How to Read Parts List Tables5**
- Exploded Views6**
 - A - Replacement Kits 6
 - B - Mast 8
 - C - Base 10
 - D - Control Box 12
 - E - Manual DPS 14
 - F - 2-Point Spreader 16

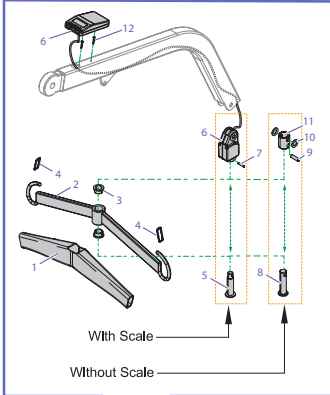
“A - Replacement Kits”,
page 6



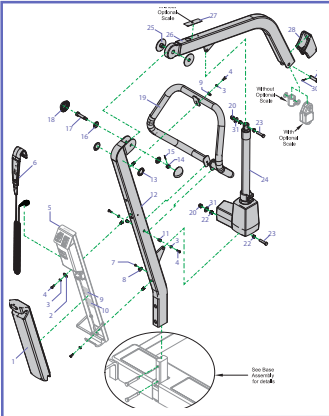
“D - Control Box”,
page 12



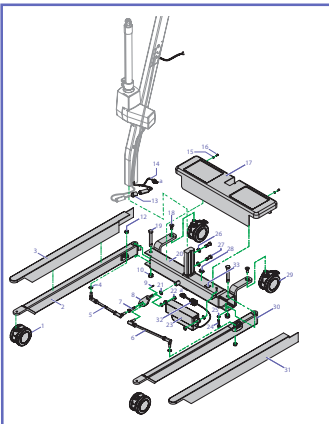
“F - 2-Point Spreader”,
page 16



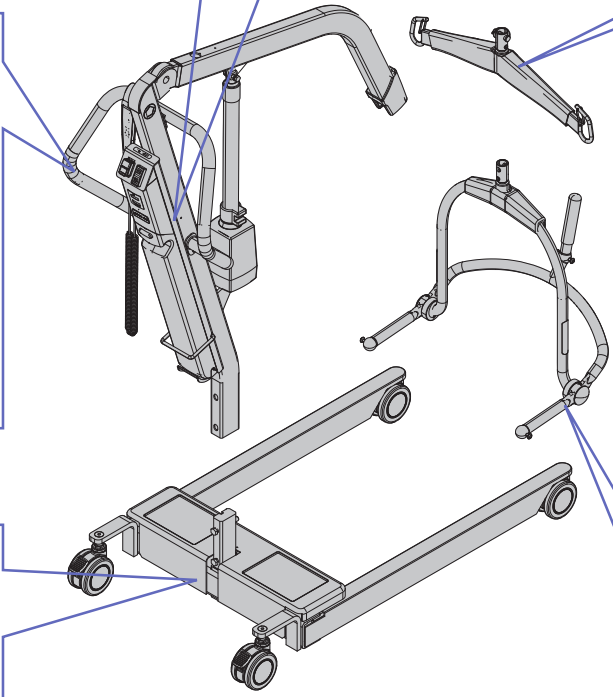
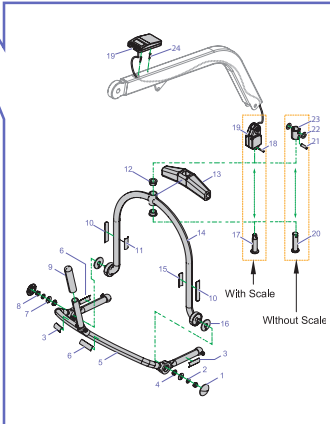
“B - Mast”,
page 8



“C - Base”,
page 10



“E - Manual DPS”,
page 14



Serial Number Information

Before ordering spare parts, study the exploded views closely and make sure that you are familiar with all the spare parts involved.

Before contacting the ArjoHuntleigh Sales department, always have the following information at hand:

- Correct name of the product (see Product Identification Label below).
- The serial number of the product (see Product Identification Label below).

Product Identification Label

PRODUCT CODIFICATION

SERIAL NUMBER

MANUFACTURER INFORMATION

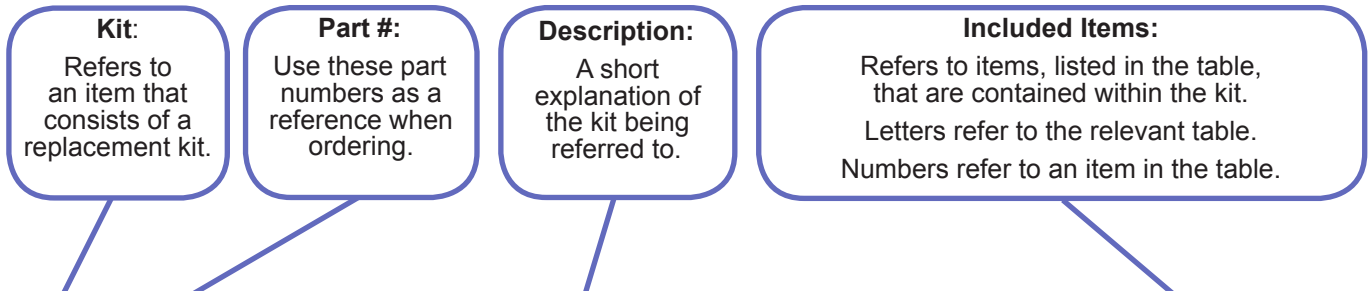
Product Number Nomenclature

K M 5 6 X X X X

- POWER CORD OPTION**
 - 1 - UL (NORTH AMERICA)
 - 4 - AU (AUSTRALIA)
 - 8 - CE & UK (EUROPE & UNITED KINGDOM)
- SPREADER BAR OPTION**
 - 0 - 2-POINT SPREADER BAR
 - 8 - MANUAL DPS
- SCALE OPTION**
 - 0 - WITHOUT SCALE
 - 1 - BOOM SCALE (NON-CERTIFIED)
- 0
- MAXI 500

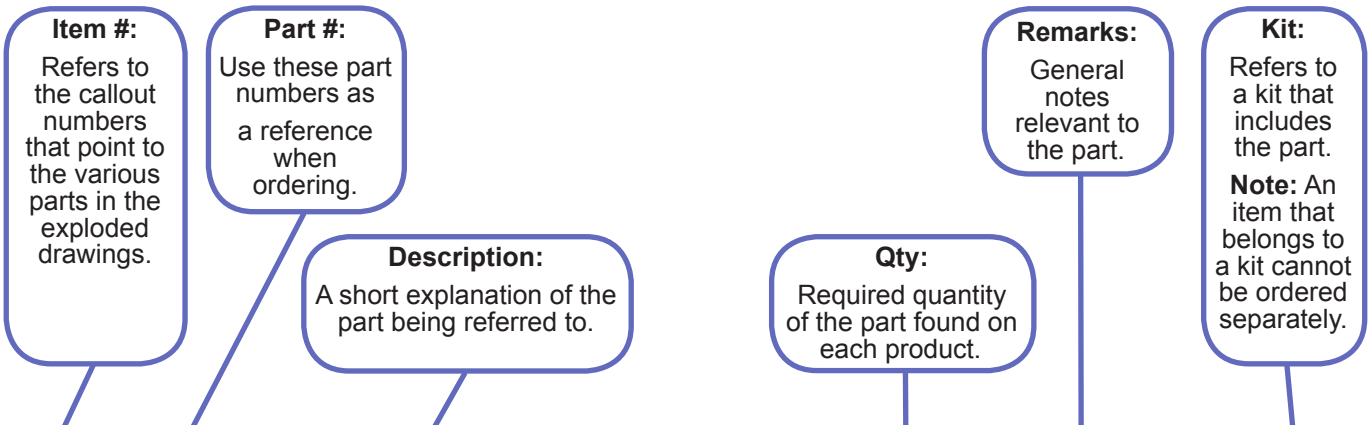
Modifications made to the equipment without ArjoHuntleigh's express acknowledgement will invalidate supplier's product liability.

How to Read Parts List Tables



A *REPLACEMENT KITS TABLE*

Item	Part #	Description	Included Items
K1	700-00001	FIRST REPLACEMENT KIT	B2
K2	700-00002	SECOND REPLACEMENT KIT	B6-B7
K3	700-00003	THIRD REPLACEMENT KIT	B1, B3-B4
K4	700-00004	FOURTH REPLACEMENT KIT	B5



B *PARTS DETAIL TABLE*

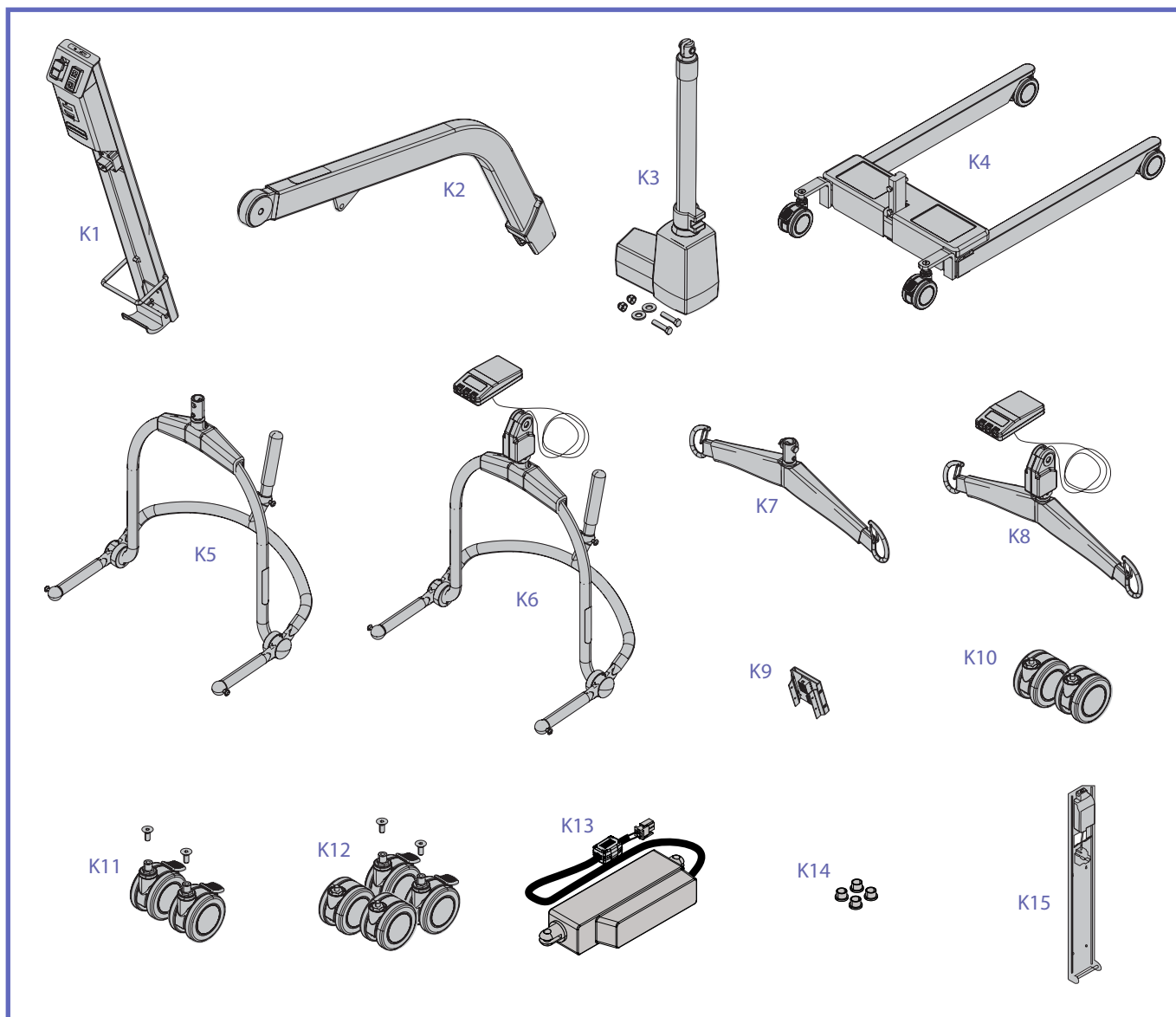
Item	Part #	Description	Qty	Remarks	Kit
1	001-00001	FIRST PART	2		K3
2	001-00002	SECOND PART	2		K1
3	001-00003	THIRD PART	2		K3
4	001-00004	FOURTH PART	1		K3
5	001-00005	FIFTH PART	2		K4
6	001-00006	SIXTH PART	8		K2
7	001-00007	SEVENTH PART	2		K2

Legend

- 1 → Callout for single item
- ① Callout for assembly kit
- Assembly lines above components
- Assembly lines behind components
- Text in Blue Highlights changes from previous revision

Exploded Views

A - Replacement Kits

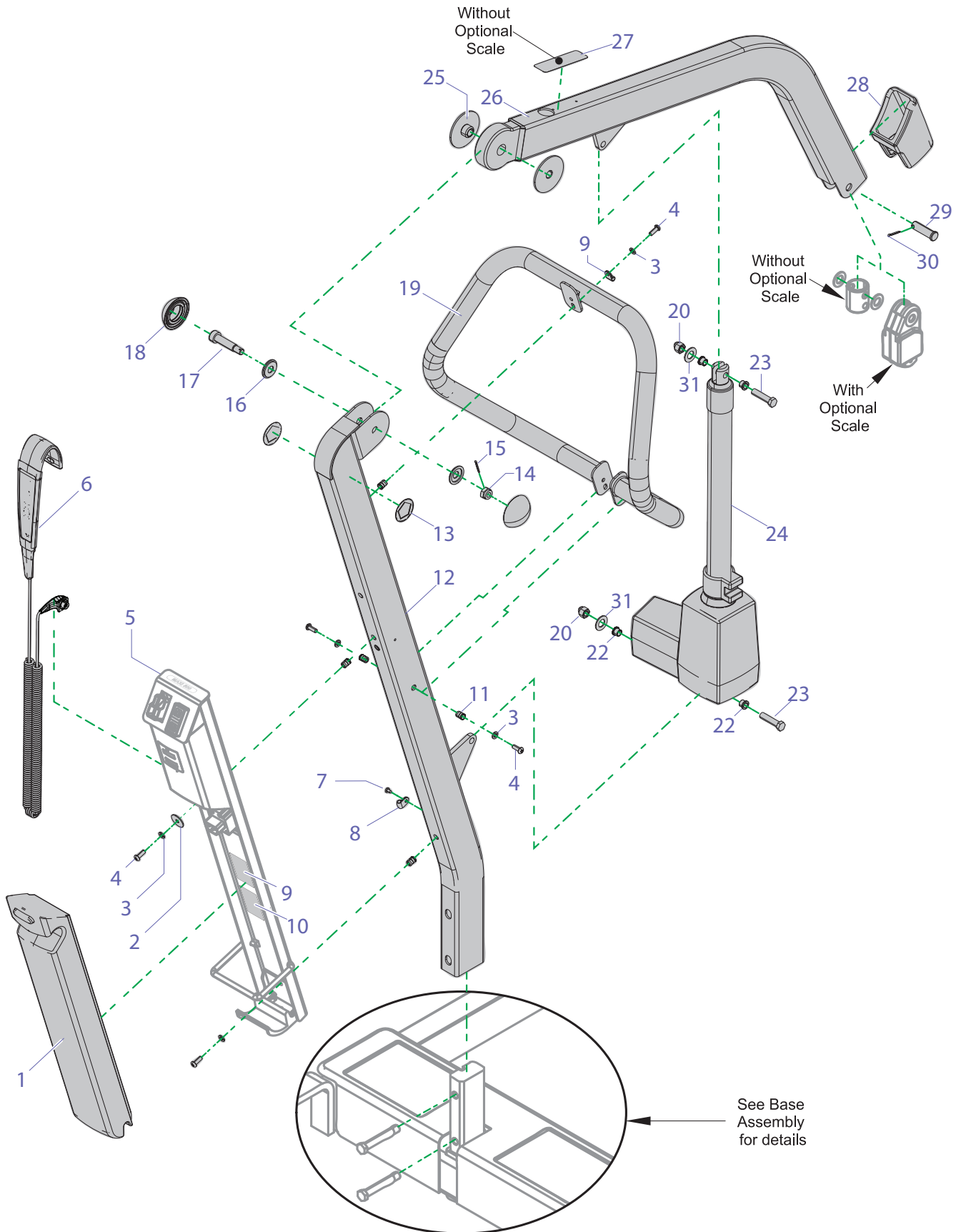


Instruction For Use # 001.20815.**

** Last 2 characters varies according to document's language.

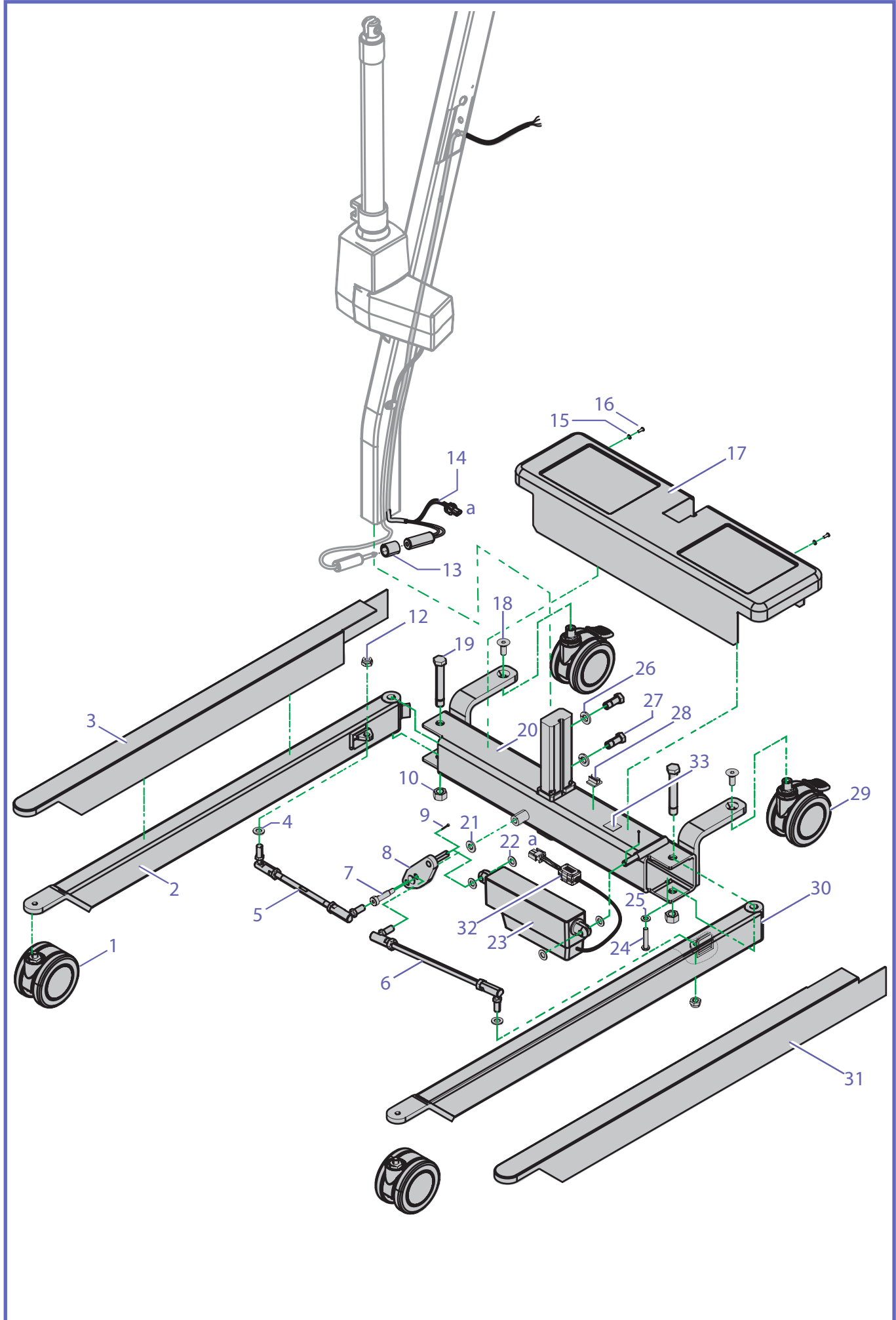
A			
<i>REPLACEMENT KITS TABLE</i>			
ITEM	PART #	DESCRIPTION	INCLUDED ITEMS
K1	700-16265-B	MAXI 500 CONTROL BOX ASSEMBLY	D1 - D26, B2 - B4
K2	700.20221	MAXI 500 BOOM ASSEMBLY	B25 - B28
K3	700-20005	ACTUATOR ASSEMBLY	B20 - B24, B31
K4	700-20812	MAXI 500 BASE ASSEMBLY	C1 - C13, C15 - C33
K5	700-19342-BOX	MANUAL DPS	B29 -B30, E1 - E16, E20 - E23
K6	700-19341-BOX	MANUAL DPS W SCALE	E1 - E19, E24, B29 - B30
K7	700.05500	2-POINT LOOP SPREADER BAR	B29 - B30, F1 - F4, F8 - F11
K8	700.05505	2-POINT LOOP SPREADER BAR W SCALE	B29 - B30, F1 - F7, F12
K9	492-20800-B	MAXI 500 CIRCUIT BOARD	D15
K10	700-00088	FRONT CASTOR REPLACEMENT KIT	C1
K11	700-00079	REAR CASTOR REPLACEMENT KIT	C18, C29
K12	700-00091	4 CASTOR REPLACEMENT KIT	C1, C18, C29
K13	700.20880	MOTORISED ACTUATOR	C23, C32
K14	700-34040	ACTUATOR BUSHING REPLACEMENT KIT	B22
K15	NDA8200-INT	WALL MOUNTED BATTERY CHARGER	-

B - Mast



B		MAST			
ITEM	PART #	DESCRIPTION	QTY	REMARKS	KIT
1	NDA0100-20	BATTERY	1		
2	000.03450	FLAT WASHER M6 ZINC (25 OD)	1		
3	000.03420	LOCKWASHER M6 ZINC	5		
4	000.03105	SCREW M6 X 16 BUTTON ZINC	5		
5	-	CONTROL BOX - REFER TO "D - CONTROL BOX" EXPLODED VIEW ON PAGE 12.			
6	KMX82368-XX	HANDSET	1		
7	000.00635	TAP SCREW ST 4.2 X 9.5 TORX	1		
8	E0295	CABLE CLAMP 3/16	1		
9	001.20809	PRODUCT IDENTIFICATION LABEL	1		
10	-	SERIAL NUMBER LABEL	1	Consult technical support	
11	000.03405	NUT INSERT AT M6 X 1.0	5		
12	236.20816	MAXI 500 MAST	1		
13	001.20810	MAXI 500 227 KG SWL STICKER	2		
14	000.04410	LOCKNUT M10 ZINC	1		
15	000.01800	COTTER PIN 2 X 20 ZINC	1		
16	202.20830	BOOM PIVOT SPACER	2		
17	000.04610	SHOULDER 12 X 40 (M10)	1		
18	000.20501	MAXI 500 BOLT CAP	1		
19	233.20850	MAXI 500 HANDLE	1		
20	000-03803	NUT ACORN M8 BLK ZINC	2		
22	034040-B	BUSHING	4		K14
23	000.04283	10 X 30 M8 SHOULDER	2		
24	400-20001	LA-34-350 (10KN) ACTUATOR	1		K3
25	200.20252	BOOM BUSHING	2		
26	236.20220	BOOM ASSY	1		K2
27	001.20807	MAXI 500 TOP BOOM STICKER	1		
28	000.20515	MAXI 500 BOOM CAP	1		
29	000.00910	CLEVIS PIN Ø 1/2 X 1 25/32	1		
30	000.00860	COTTER PIN 3/32 X 3/4	1		
31	000-03804	M8 WASHER BLACK	2		

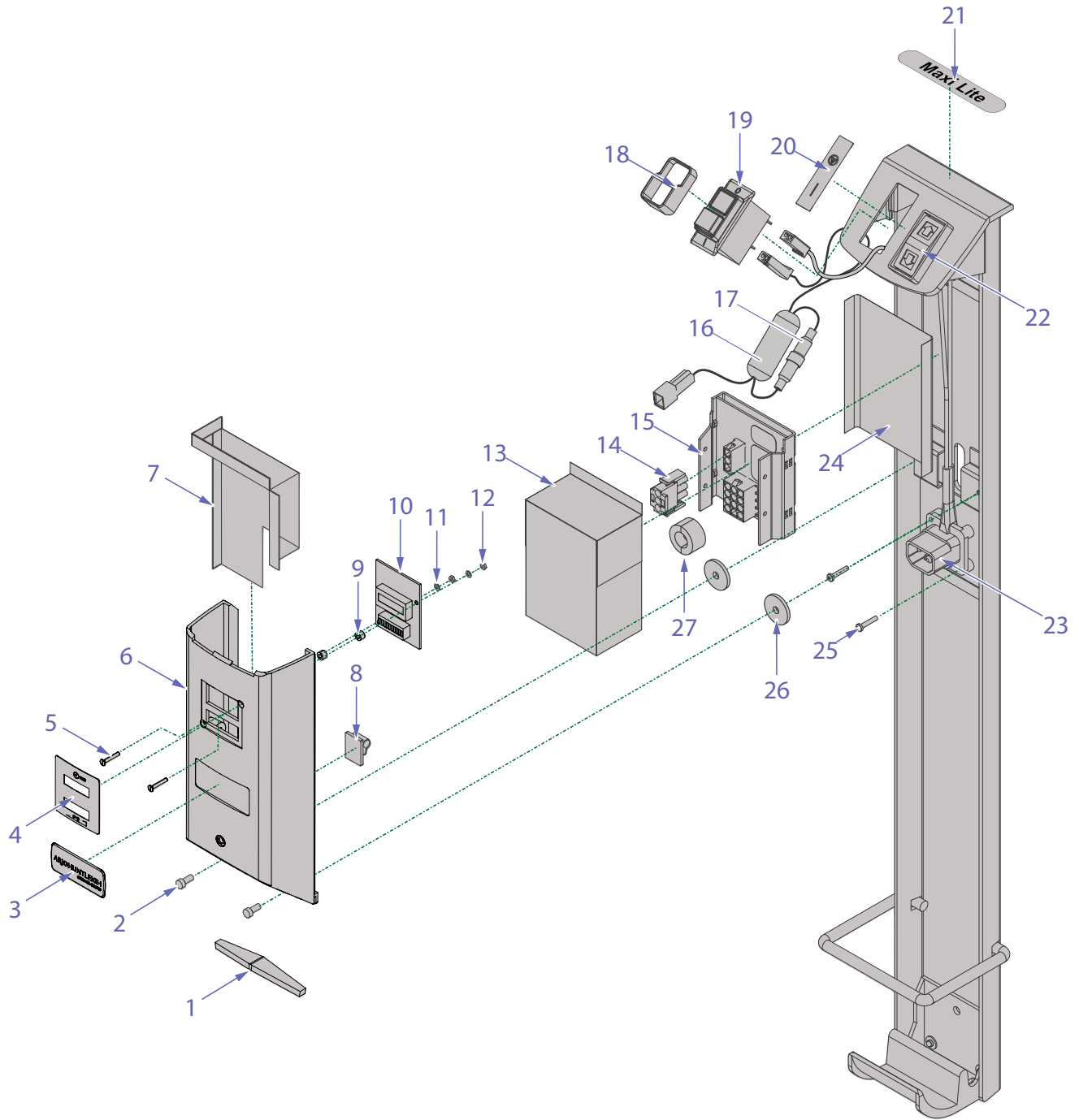
C - Base



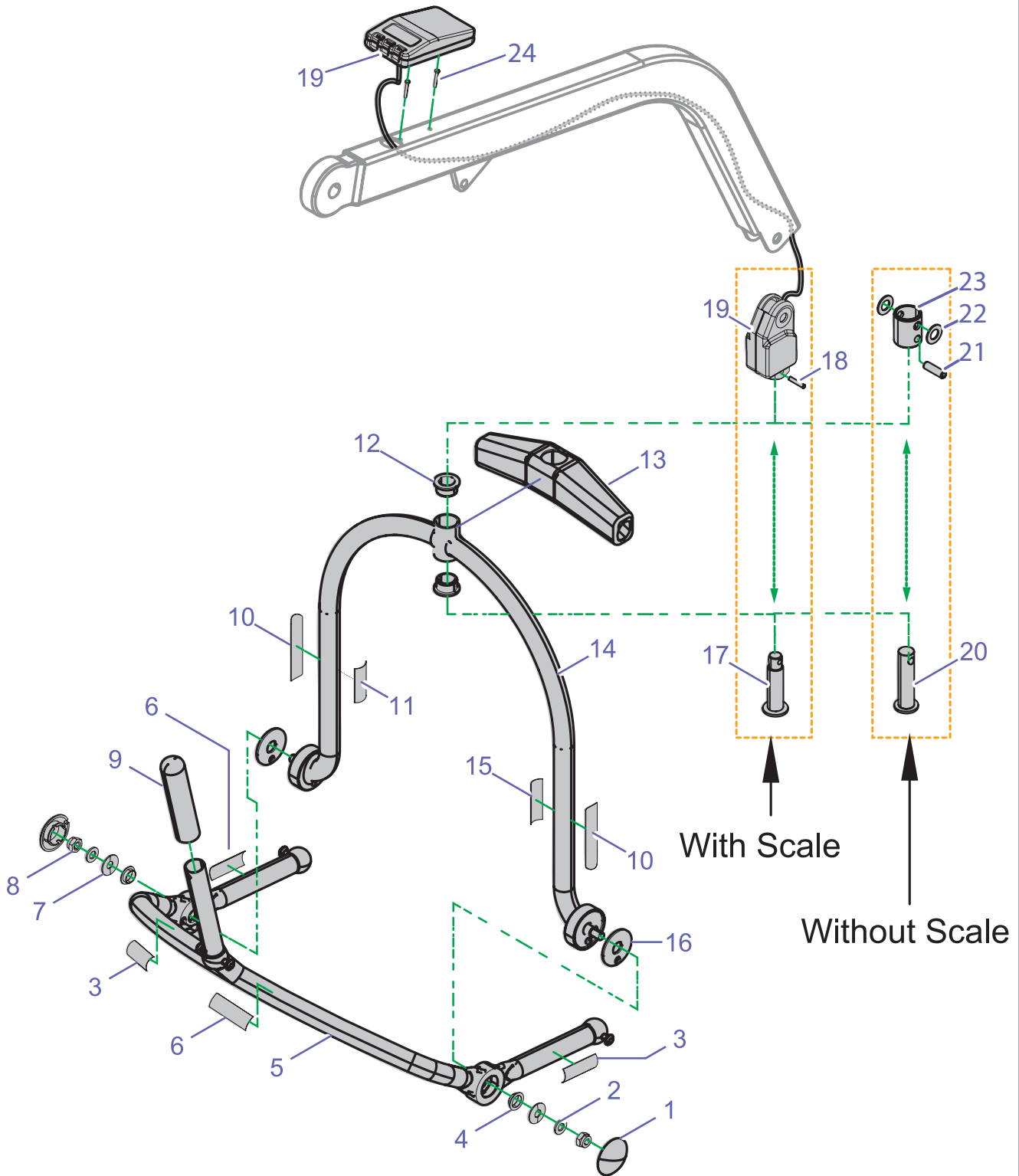
001-20813-EN rev. 4

C		BASE			
ITEM	PART #	DESCRIPTION	QTY	REMARKS	KIT
1	000.20480	Ø100MM SWIVEL WHEEL	2	Serial № 00000 - 13207	K12
				Serial № 13208 - ...	K10
2	236.20806	MAXI 500 RIGHT LEG	1		
3	000.20326	MAXI 500 RIGHT LEG COVER	1		
4	000.04430	M10 (20 OD) ZINC FLAT WASHER	2		
5	000.20120	213 MM LR TIE ROD END KIT	1		
6	700.20131	M10 297 LR KIT ROD END	1		
7	000.04283	10 X 30 M8 SHOULDER	1		
8	203.20265	POWER BASE SHIFTER	1		
9	000.00860	3/32 X 3/4 COTTER PIN	2		
10	000.05010	M14 ZINC STOVER LOCKNUT	2		
12	000.04410	M10 ZINC LOCKNUT	2		
13	200.26095	INSOLATOR - JACK 1/4	1		
14	700.20800	WIRE HARNESS POWER BASE	1		
15	000.02905	FLAT WASHER M5 X 12OD X 1TH	2		
16	000.02555	SCREW M5 X 12 BUTTON SS	2		
17	000.20317	MAXI 500 BASE COVER	1		
18	000.20065	M10 X 25 ZINC FLAT SCREW	2		
19	203.20835	MAXI 500 SCREW FOR BASE	2		
20	236-20812	MAXI 500 POWER BASE	1		K4
21	000.04450	10 X 2.5T NYLON FLAT WASHER	1		
22	000.05110	0.0406 X 0.75 X 0.06 FLAT WASHER	4		
23	E0066	ACTUATOR LA-12-100	1		
24	000.03690	M8 X 40 ZINC BUTTON SCREW	2		
25	000.03960	M8 ZINC LOCKWASHER	2		
26	000.04910	LOCKWASHER M12 ZINC	2		
27	000.04550	SCREW M12 X 30 HEX ZINC	2		
28	000.20606	1/4" SELF-ADHESIVE CABLE CLAMP	1		
29	000.20490	Ø100MM SWIVEL WHEEL WITH BRAKE	2	Serial № 00000 - 13207	K12
				Serial № 13208 - ...	K11
30	236.20801	MAXI 500 LEFT LEG	1		
31	000.20331	MAXI 500 LEFT LEG COVER	1		
32	405-26000	FERRITE	1		
33	001.00260	TWO-WAY TAPE (ROLL)	*	* 2.54 cm (1 in)	

D - Control Box

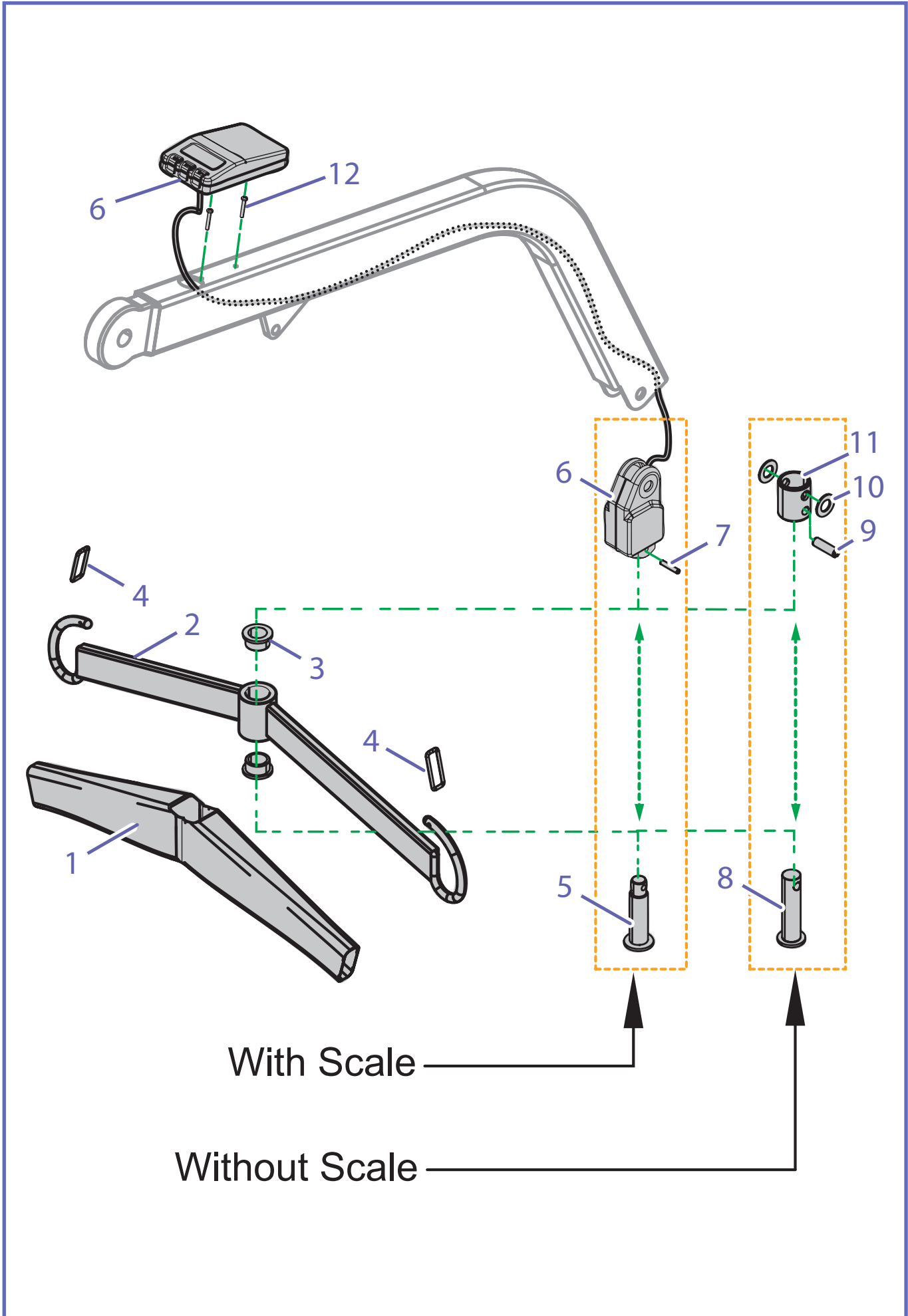


D CONTROL BOX					
ITEM	PART #	DESCRIPTION	QTY	REMARKS	KIT
1	HMX981	FOAM RUBB STRIP BATTERY	2		
2	HMX420	M4 X 10 PHILLIPS SCREW	2		
3	8418700	"ARJOHUNTLEIGH" STICKER	1		
4	HMX913	LABEL HOURS RUN	1		
5	HMX925	M2.5 X 16 FLAT SCREW	2		
6	HMX973	ELECTRICAL COVER	1		
7	200-25134	FILM PLASTIC PROTECTOR BDI	1		
8	450-00159	WIRE CLIP LATCH .19" SELF ADH	1		
9	HMX1054	SPACER 3.1 X 6 X 4	2		
10	HMX974	BATTERY STATUS INDICATOR	1		
11	HMX875	M2.5 WASHER	2		
12	HMX873	M2.5 NUT	2		
13	200-25135	FILM PLASTIC PROTECTION MOT BRD	1		
14	450.00315	MATE-N-LOCK PLUG 3	1		
15	492.20800	MAXI 500 PCB ASSY	1		K9
16	405-26001	FERRIT CYLINDER CLAMP-ON 6.60 mm	1		
17	402.16265	IN-LINE FUSE HOLDER ASSY	1		
18	KKX21360-00	BEZEL	1		
19	460.20800	10A BREAKER SWITCH	1		
20	TMO-323	ON/OFF STICKER	1		
21	001-00561	MAXI 500 PRODUCT NAME LABEL	1		
22	HMX998	SWITCH H/L	1		
23	HMX1060	CABLE ASS'Y LEC BULGIN PLUG	1		
24	001.00026	MEDIBO CONTROL BOX MICA	1		
25	S3453	M3 X 16 PHILLIPS SCREW	2		
26	HMX332	NYLON RING DIA. 4.3 X 18 X 2	2		
27	405.20800	FERRITE 10 mm	1		



E		MANUAL DPS			
ITEM	PART #	DESCRIPTION	QTY	REMARKS	KIT
1	MX01460.20	Ø50 GREY PLASTIC CAP	2		
2	MX01450.0	M10 NYLON WASHER	2		
3	001-00310	LABEL RIGHT CLIP-WARNING	2		
4	KPX67540-00	16-18 X 6 FLANGE BUSHING	2		
5	239.19329	MEDIUM DPS MANUAL LOWER FRAME	1		K5, K6
6	001-00311	LABEL LEFT CLIP-WARNING	2		
7	GX20460.0	SPRING DISC WASHER	2		
8	000.04410	M10 ZINC LOCKNUT	2		
9	200.19320	DPS HANDLE	1		
10	001.19310	SLING SIZE LABEL (MEDIUM DPS)	2		
11	001-00258	SERIAL NUMBER LABEL	1		
	001-20833	PRODUCT LABEL - 700-19341		With Scale	
12	000.05465	20-26 X 15 MM FLANGE BUSHING	2		
13	361.19000	DPS CARRY BAR PADDING	1		
14	239.19360	MEDIUM DPS MANUAL TOP FRAME ASSY	1		K5, K6
15	001-00312	VERTICAL INSTRUCTION CLIP	1		
16	KMX82671-00	FRICTION WASHER	2		
17	205.20475	PIVOT BOLT	1		
18	000.00825	3/16 X 1 SPRING PIN	1		
19	400.30001	MODEL 1000 GREY SCALE	1		
20	205.05465	PIVOT SHAFT	1		
21	000.00828	3/8 X 1 1/4 ZINC PLATED SPRING PIN	1		
22	000.00980	FLAT WASHER NYLON 1/2 X 1/16	2		
23	205.20466	UNION TUBE CARRY BAR	1		
24	000.00606	TAP SCREW #6 7/8 TYPE B	2		

F - 2-Point Spreader



F**2-POINT SPREADER BAR**

ITEM	PART #	DESCRIPTION	QTY	REMARKS	KIT
1	361.05495.33	SPREADER BAR PADDING	1		
2	239-05403	TWO-POINT SPREADER BAR	1	w/o scale	K7
				w scale	K8
3	000.05465	20-26 X 15 MM FLANGE BUSHING	2		
4	200.05466	SAFETY LATCH	2		
5	205.20475	PIVOT BOLT	1		
6	400.30001	MODEL 100 GREY SCALE	1		
7	000.00825	3/16 X 1 SPRING PIN	1		
8	205.05465	PIVOT SHAFT	1		
9	000.00828	3/8 X 1 1/4 ZINC SPRING PIN	1		
10	000.00980	FLAT WASHER NYLON 1/2 X 1/16	2		
11	205.20466	UNION TUBE	1		
12	000.00606	TAP SCREW #6 7/8 TYPE B	2		

ARJOHUNTLEIGH

GETINGE GROUP

GETINGE GROUP is a leading global provider of products and systems that contribute to quality enhancement and cost efficiency within healthcare and life sciences. We operate under the three brands of **ArjoHuntleigh**, **GETINGE** and **MAQUET**. **ArjoHuntleigh** focuses on patient mobility and wound management solutions. **GETINGE** provides solutions for infection control within healthcare and contamination prevention within life sciences. **MAQUET** specializes in solutions, therapies and products for surgical interventions and intensive care.