



Improving Care. Improving Business.®

WARRIOR™ SPINE UNIVERSAL BACK BRACE

Single Patient Use
Non-Sterile
Not Made with Natural Rubber Latex
Rx Only

IMPORTANT INFORMATION

Please read all instructions, warnings, and precautions before use. Correct application is essential for proper functioning of the product. Use only on the person it was provided to by a healthcare professional and only for the use it was intended.

INTENDED USE

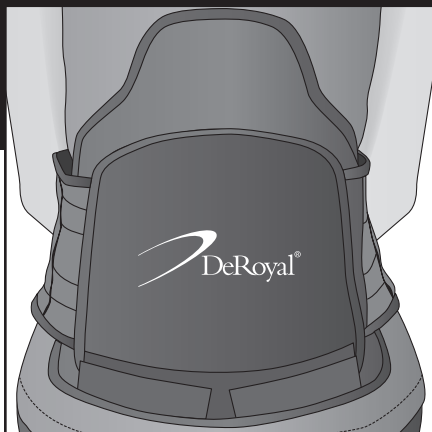
The DeRoyal® Warrior™ Spine, powered by The Boa® Closure System, is intended for sagittal alignment, hyperextension or flexion bracing used for lower lumbar strains and sprains, proprioceptive feedback, postural control and reinforcement of proper body ergonomics.

CONTRAINDICATIONS

Patients with poor peripheral circulation, diabetes or decreased skin sensitivity should not use this product.

PRECAUTIONS

- This product is to be fitted initially by a physician (or properly licensed practitioner) who is familiar with the purpose for which it is intended. The physician or practitioner is responsible for providing wearing instructions and precautions to other healthcare practitioners or healthcare providers involved in the patient's care as well as the patient. Consult your physician (or properly licensed practitioner) immediately if you experience sensation changes, unusual reactions, swelling or increased pain while using this product. Follow the instructions of your physician (or properly licensed practitioner) for duration of use. These instructions do



not supersede hospital protocol and/or direct orders of patient's physician. Discontinue use of the device and consult physician or properly licensed practitioner if it becomes damaged in any way, limiting its ability to perform as intended.

- Use only as directed by your medical professional.
- Discontinue use of the device and consult physician or properly licensed practitioner if pressure points or pressure ulcers develop.
- Inspect brace for damaged or missing components prior to patient application.
- Inspect brace for proper fit immediately following patient application.

INSTRUCTIONS FOR USE

SIZING

The DeRoyal Warrior Spine Universal Back Brace features four (4) sizing zones:

NOTE: Measurement can be determined by circumferential waist measurement or pant size.

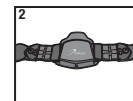
	1	2	3	4
WAIST MEAS.	24"-32"	32"-38"	38"-44"	44"-54"
MEN'S PANT SIZE	26-32	32-38	38-44	44-46
WOMEN'S PANT SIZE	0-6	8-10	12-16	18-24

NOTE: For best results and ease of adjustment, brace sizing should be conducted on a large bed or table.



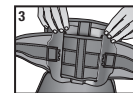
Improving Care. Improving Business.®

- Prior to application, pull out both dials to release lacing. Release front hook and loop closure to open the brace belt completely.

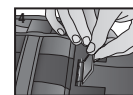


- Place the back of the brace flat with the outside of the back panel facing upward. Ensure the left and right belt arms are spread outward evenly and non-impinged.

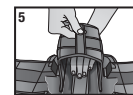
- Unfasten the back flap hook closures (2) at the bottom of the back panel, flip open the back panel and flip over the belt arms.



- Pull up on the two (2) plastic hook flaps that secure the belt in place until they reach a 45 degree angle upward from the belt.



- Place one hand in the middle of the adjustment panel and under the belt and use the other hand to pull up on the belt pull strap until the appropriate size zone is reached on the left and right side of the belt. **NOTE:** Ensure that the sizing zones are even on both sides. Reapply the hook flaps to secure the belt.



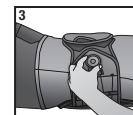
- Press down firmly on any excess belt length, fold the flap over and reattach the back flap hook closures at the bottom of the back panel.



APPLICATION

NOTE: Wear a shirt under this brace.

- While in a standing or seated position, place compression brace so the back panel is centered in the low back area. Secure the front hook and loop closure of the belt.
- Next, the patient should lie in a supine position with their knees comfortably bent (flexed) and their hips parallel with their shoulders.
- At each side of the brace, the patient will find a dial. While in the supine position, the patient should push the dials in to engage then turn knobs



clockwise to tighten laces. Turn dials at the same time to ensure even compression. Turn dials until a comfortable level of compression is achieved. This compression is adjustable and can be released or tightened using the dials to accommodate different activity levels and degree of comfort.

- To remove the brace, pull out the dial to release compression and remove the front hook and loop closure of the belt.

LATERAL PANELS APPLICATION (159-03 ONLY):

The DeRoyal Warrior Spine Brace (159-03 series) features lateral panels for increased stability, motion restriction, and support.

- Follow all application steps listed under "APPLICATION."
- Once the sizing is determined, the brace is applied and an appropriate fit is achieved, remove the brace and place the lateral panels on the inside of the brace's belt using the two (2) hook attachments.
- Reapply the brace and ensure each panel aligns directly with the patient's frontal and lateral plane. Readjust panel positioning to accommodate different activity levels and degree of comfort.

CUSTOM-FITTED POSTERIOR PANEL APPLICATION (NOTE: 159-11, 159-12, 159-13 version ONLY):

The DeRoyal Warrior Spine Orthoses feature custom formable panels that can be shaped to fit the desired specifications of the prescribing clinician. Once formed, these panels can be inserted into the posterior pocket of the brace.

- Follow all application steps listed under "APPLICATION."
- Once the sizing is determined, the brace is applied and an appropriate fit is achieved, remove the brace by opening the hook and loop closure in the center of the back panel and unfasten the hook and loop closure at the top of the back panel to open the posterior panel pocket. Remove the existing black plastic panel.
- Position the patient into a prone position (on



Improving Care. Improving Business.®

stomach) on a fitting table. Assist the patient into a hyperextended position using a pillow. Patient can also prop themselves up on their elbows if they are capable and movement is pain free.

4. Remove the custom formable panel from the silver package.
5. Place the panel on the patient's back with the bottom of the panel positioned just above the top of the patient's coccyx. Press to form the panel to the patient's spinal shape or desired curvature.
6. Let panel and patient in desired form/position for 10-15 minutes until panel is firm. Note: For quicker forming, lightly spray or dampen panel with water and let it sit for 5 minutes or until firm.
7. Once panel is firm, insert the panel into the posterior panel pocket and reapply the brace.

HOT/COLD PACKS:

The DeRoyal Warrior Spine Orthoses feature two (2) hot/cold packs that can be utilized in conjunction with the back brace for temperature therapy. **NOTE:** Follow the instructions that are printed on each hot/cold pack carefully before using with the back brace.

NOTE: Wear a shirt under this brace.

1. Follow all application steps listed under "APPLICATION."

2. Once the sizing is determined, the brace is applied and an appropriate fit is achieved, remove the brace, open the hook and loop closure in the center of the back panel and unfasten the hook and loop closure at the top of the back panel to open the posterior panel pocket.



3. Insert one or both cold packs and position as desired. Use the hook and loop closure in the center of the back panel to position hot/cold packs.

CLEANING INSTRUCTIONS

Hand wash with mild detergent in lukewarm water. Air dry.

WARRANTY

DEROYAL PRODUCTS ARE WARRANTED FOR NINETY (90) DAYS FROM THE DATE OF SHIPMENT FROM DEROYAL AS TO PRODUCT QUALITY AND WORKMANSHIP. DEROYAL'S WRITTEN WARRANTIES ARE GIVEN IN LIEU OF ANY IMPLIED WARRANTIES, INCLUDING WARRANTIES OF MERCHANTABILITY OR FITNESS FOR A PARTICULAR PURPOSE.



Improving Care. Improving Business.®

DEROYAL INDUSTRIES, INC.
200 DeBusk Lane
Powell, TN 37849 U.S.A.

Part #0-1890
©2015 DeRoyal. All Rights Reserved.
Revised 1/15

