

## VALANCE DESIGN AND CONSTRUCTION FOR SINK AND COOKTOP SURROUNDS

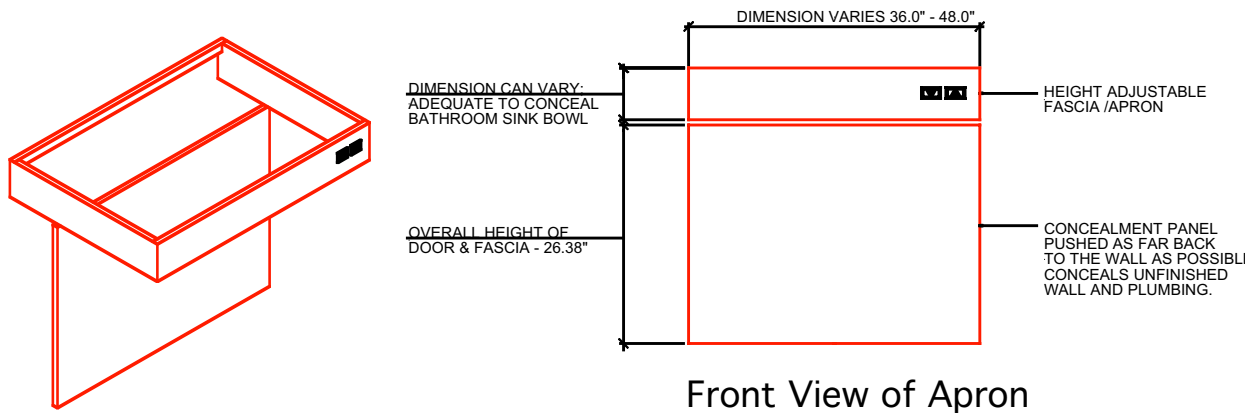
Below are a few examples for designing and constructing the valance for sinks and cooktops used with the Approach system. Other design configurations are possible. Due to the special nature of this installation, ADAS recommends that an experienced cabinetmaker have on hand the actual Approach Sink system, sink or cooktop, and plumbing prior to building the valance.

A front apron panel below the counter height is required to mount the controls for the Approach mechanism. This apron panel should be no less than three inches high. Generally the apron should be just high enough to conceal the cooktop or sink basin for knee space considerations. A second panel that angles back and down towards the wall allows for the creation of more knee space.

### Example 1: Valance with Back Panel

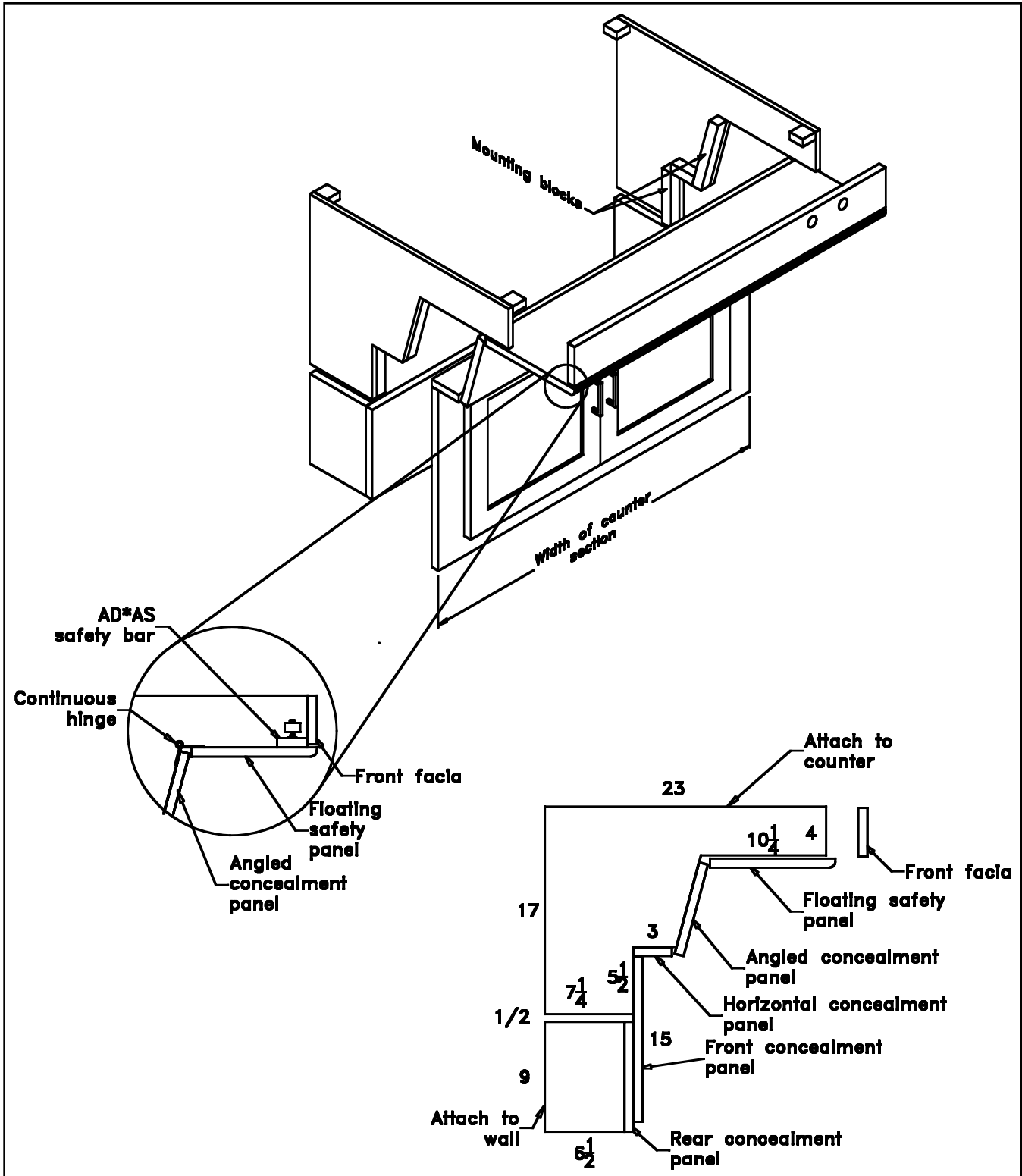
Any exposed electrical or plumbing systems should be insulated, padded, or concealed to improve the aesthetics and protect users from contact with hot surfaces. Any concealment panel should be installed to be removable for access to the plumbing or electrical for repair.

If a concealment panel is not used, the plumbing should be wrapped and insulated in fabric to blend with the room decor.



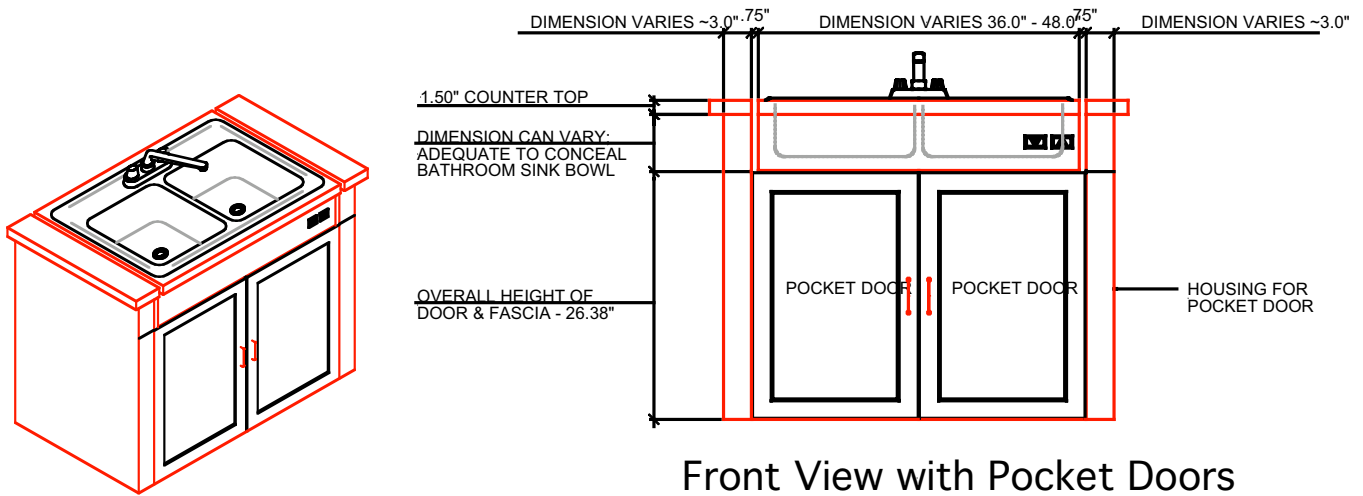
## Example 2: Valance with Angled Concealment Panel

Your dimensions will vary to accommodate the sink drain branches. A removable panel or cabinet doors are recommended to allow quick and easy access to plumbing and electrical power connections

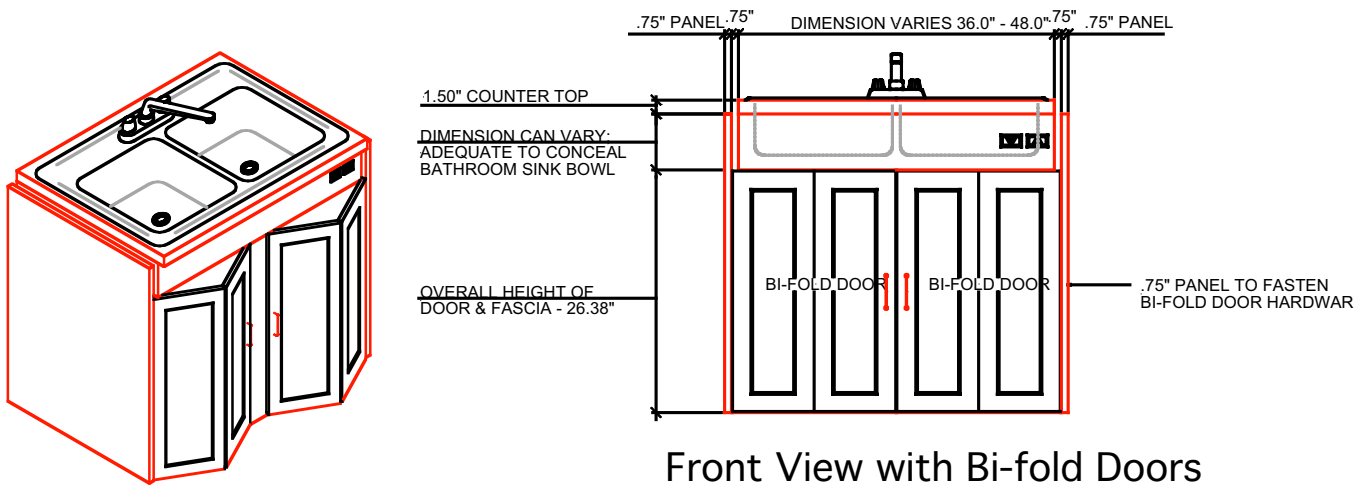


Swinging retractable cabinet door hardware can make it possible to conceal knee spaces. This special hardware allows the doors to open in the traditional manner and retract under the counter or fold out of the way. The door hardware required to do this is available to cabinet makers. Using these design options it may still be necessary to wrap plumbing or cooking elements in insulation to prevent contact with hot elements.

**Example 3: Pocket Door Valance with Safety Bar**



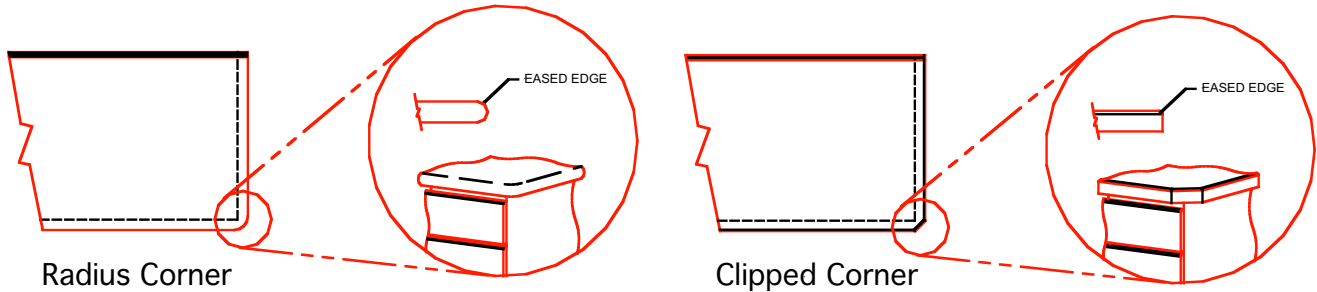
**Example 4: Bi-fold Door Valance with Safety Bar**



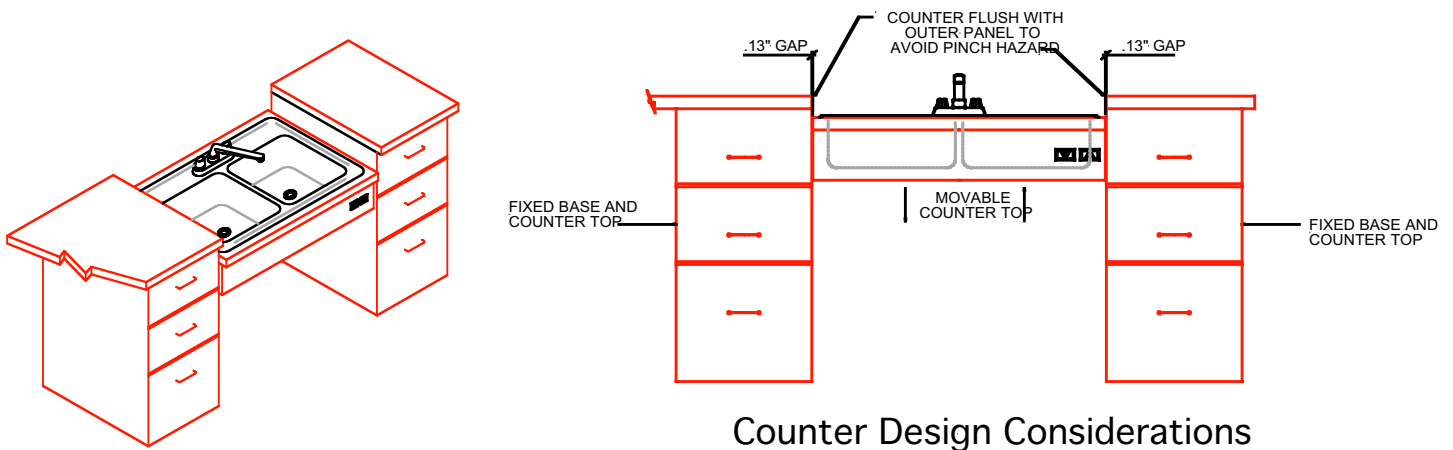
## Other Design and Installation Considerations

### Countertop design

1. Edge treatments should include clipped or rounded corners and eased edges so that there are no sharp points. Open countertop edges should be clipped or radiused as shown in the drawing. Clipped corners on the countertops are recommended when the adjustable countertop is adjacent to fixed countertops to reduce any possible pinch hazard.

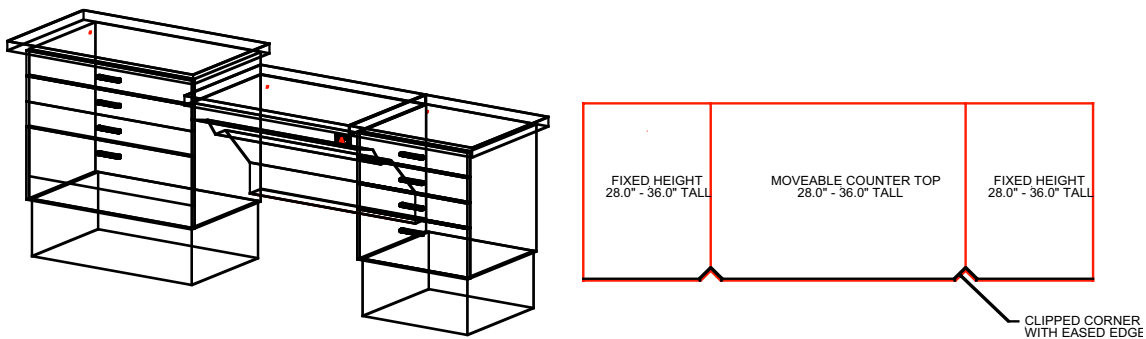


2. Countertop edges should be installed flush with side panels of adjacent base cabinets to avoid pinch hazards between the adjustable countertop and the fixed countertops.



### Counter Design Considerations

3. Adjacent cabinets and counters will require finished ends since they may be visible when the Approach systems is in lower positions. The sides of the valance must extend beneath the countertop far enough to avoid creating a gap between the adjacent fixed counters when the adjustable counter is in its highest position.



4. Backsplash: A tiled backsplash or other wall-mounted backsplash should extend along the width of the adjustable counter portion and extend in heights from 27-40" AFF. Finished sides of adjacent cabinets and counters should be water resistant.